



BUILT-IN TRASH CONTAINER

Model #53825-T

INSTALLER: Leave these instructions with consumer.
CONSUMER: Retain for future reference.



This document is for general installation. For all other important information including warranty and servicing and cleaning, refer to the included **DOOR, DRAWER, & PANTRY INSTALL SPECIFICATIONS** instructions.

- When installing this accessory directly below another unit, only install with Fire Magic built-in products.
- It is recommended that silicon caulking (not supplied) is applied around the back of the unit's trim before installing into the opening.
- **This unit must be installed per this instruction.**

INSTALLATION

1. Create the appropriate cutout in your island enclosure as specified for your model number. See Table 1 and Fig. 1-1.
2. Remove all packaging and the protective coating from the accessory.
3. This trash container features a foot-activated pedal for hands free disposal. To open, step onto the pedal to open trash container. Remove the bin.
4. Release the door from the door slides by pressing the 2 black levers up on the left side and down on the right side (with the levers pressed, the door slides will need to be pushed back to unlock.) See Fig. 1-2. After all slides are unlocked, pull the door off completely.

Note: To remove door, it may require a second person to hold the door frame into place.

5. Insert the accessory's housing completely into the opening. Ensure it is flush against the exterior wall.
6. Install the bracket hardware kit as applicable to your island enclosure. See Fig. 1-3. This kit can be installed using two methods. Find your preferred method on the next page. See the **DOOR, DRAWER, & PANTRY INSTALL SPECIFICATIONS** instructions for more details on this bracket hardware kit.

Important: When installing in a Fire Magic GFRC Island, this kit is required to be used with installation.

Continue to the next page to install using your selected method.

Model #	Height	Width	Depth
53825-T	24"	12 3/4"	20"

Table 1 Cutout dimensions table

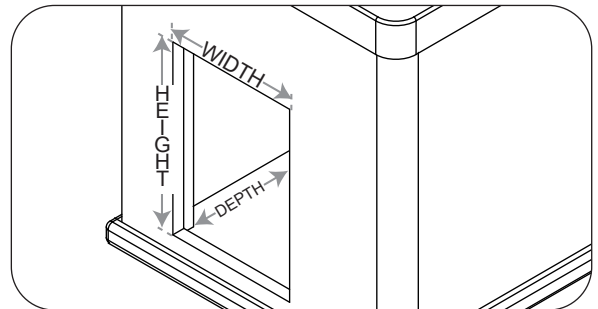


Fig. 1-1 Orientation

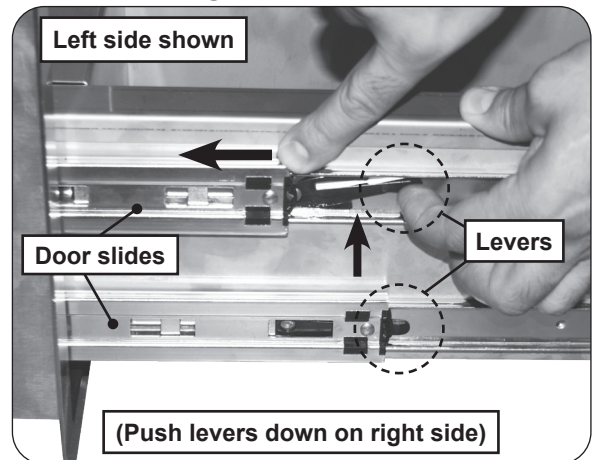


Fig. 1-2 Door removal

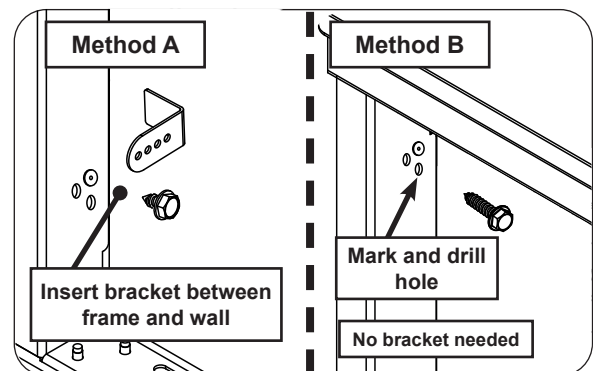


Fig. 1-3 Installation methods

Method A: Hook Brackets

Note: This method requires access to the interior of the island. If the countertop cannot be removed to install the hook brackets, an access door must be available to reach the interior. Installation steps may vary depending on the specific accessory.

- Use the 4 open holes closest to the island interior on left and right sides of the frame to secure brackets (see Fig. 2-2). Reach from within the island and insert a bracket where a cutout exists, **between the wall and door frame**. See Fig. 2-1, step 1.

Note: Installation may require a second person to hold the bracket against the wall from within the island enclosure.

Note: **The bracket flange should be oriented away from the frame and aligned against the interior island wall.**

- While holding the rear of the bracket and the front of the frame **firmly** against the concrete wall, align a bracket hole to the frame's hole cutout and insert a supplied short hex screw. Tighten the hex screw with a power drill and $\frac{5}{16}$ " hex driver (see Fig. 2-3, step 2). **DO NOT OVERTIGHTEN.**
- Repeat this process for the remaining brackets.

Method B: Long Screws

Note: **This method does not require the use of the hook brackets.**

- Use the 4 open holes closest to the island interior on left and right sides of the frame to secure brackets (see Fig. 2-2). Mark the holes as needed.
- Drill pilot holes for each screw. See Fig. 2-2, step 1. It is recommended to use a #21 drill bit (0.159") to drill pilot holes.

Note: The pilot hole depth must accommodate the length of the long screw.

- Insert the frame into the cutout and position to the pilot holes.
- Insert a long hex screw and tighten with the power drill and $\frac{5}{16}$ " hex driver (see Fig. 2-2, step 2). **DO NOT OVERTIGHTEN.**
- Repeat this process from the remaining screws.

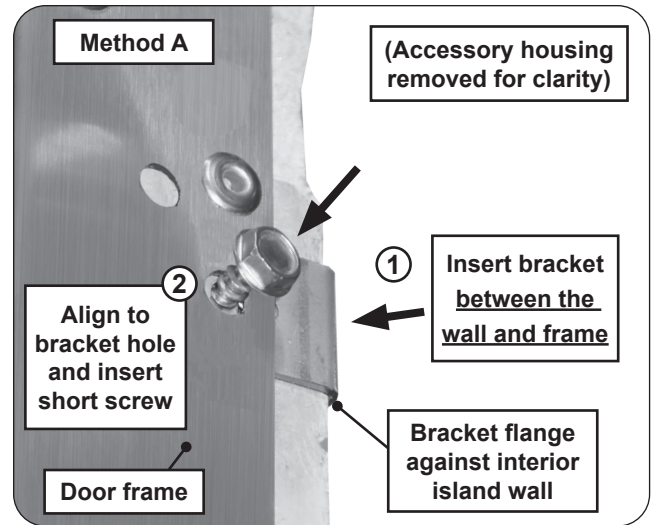


Fig. 2-1 Method A install detail

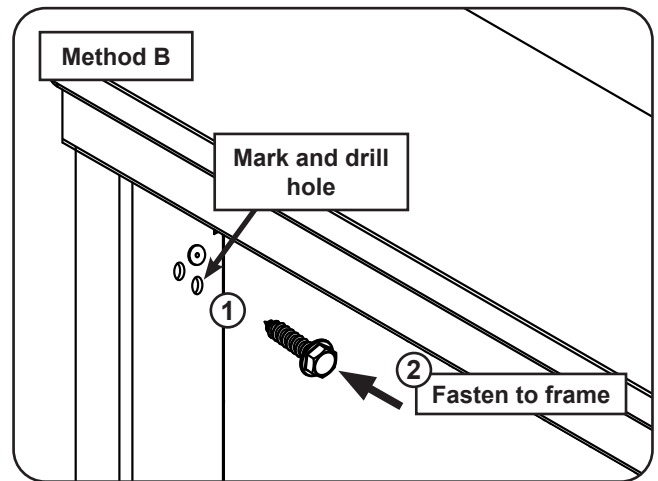


Fig. 2-2 Method B install detail

INSTALLATION (cont.)

7. Locate the 3 screw holes found on each of the left and right sides of the accessory frame (see Fig. 3-1). Secure the accessory using a 1/8" by 3/4" fastening screws (not supplied) that are appropriate for the enclosure framework. **DO NOT OVERTIGHTEN.**
8. Re-attach the door. Extend the door slides out completely and align the door into the slides, push the door closed.
9. Open the door to verify it has locked in place. Replace the bin.

KICK GUARD

To help protect the bottom of your trash container during foot-pedal operation, an optional kick guard is included. If desired, follow the steps below for installation:

- Note:** The kick guard is designed for permanent installation.
1. Clean the area of the location for the kick guard.
 2. Peel off the backing from the kick guard and apply it to the bottom of the door (as shown Fig. 3-2).

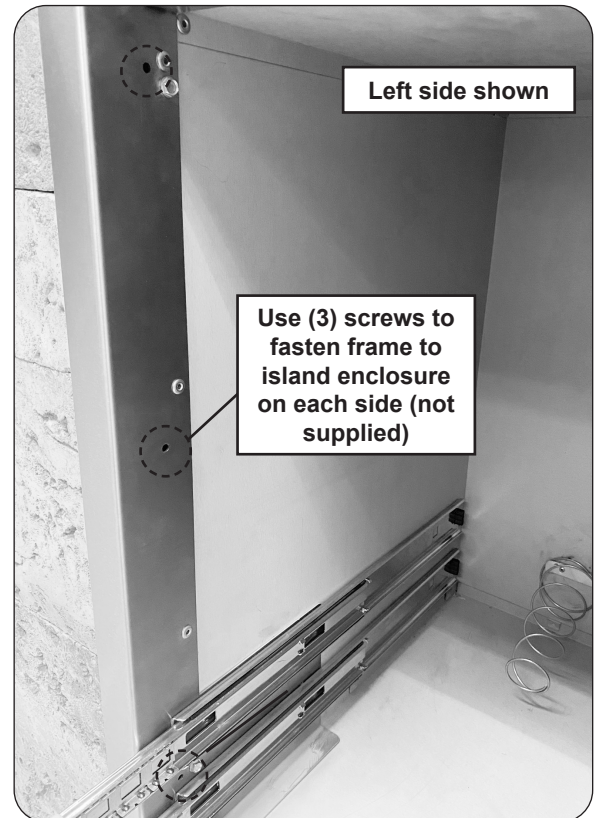


Fig. 3-1 Fasten side walls of frame

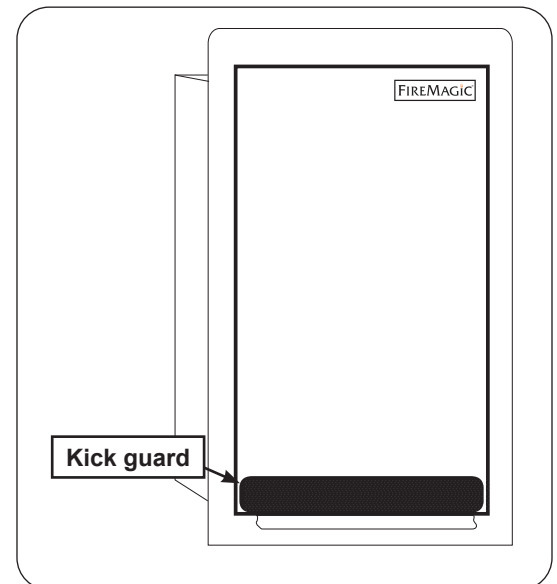


Fig. 3-2 Attach kick guard (if desired)

WARRANTY

PETERSON FIRE MAGIC DOOR, DRAWER, & PANTRY LIMITED WARRANTY

THREE-YEAR WARRANTY - Fire Magic® Premium Flush and Echelon Black (5 Series) doors, drawers, and pantries are warranted for **THREE (3) YEARS** from the date of purchase.

TWO-YEAR WARRANTY - Fire Magic® Select (3 Series) doors and drawers are warranted for **TWO (2) YEARS** from the date of purchase.

ONE-YEAR WARRANTY - Fire Magic® Legacy (2 Series) doors and drawers are warranted for **ONE (1) YEAR** from the date of purchase.

A COPY OF YOUR SALES SLIP FOR PROOF OF PURCHASE IS REQUIRED

This warranty applies to the original purchaser for products which are installed in the United States or Canada and which are operated and maintained as intended for single family residential usage (if the unit is installed in a commercial / multi-user setting, a separate Commercial / Multi-User Limited Warranty applies and is available from RHP). This warranty is valid only with proof of purchase, commences on the date of purchase, and terminates (both as to original and any replacement products) on the anniversary date of the original purchase of the product per the above schedules.

This warranty **does not** cover parts which become defective as a result of negligence, misuse, or use not in compliance with the Installation and Owner's Manual, accidental damage, improper handling, improper storage, improper installation, **lack of required routine maintenance** (as specified in the Installation and Owner's Manual), or electrical damage. Product must be installed as specified in the Installation and Owner's Manual by a **qualified professional installer**. This warranty **does not** apply to normal occurrences that may be expected with any outdoor product such as rust, corrosion, oxidation, or discoloration unless the affected part becomes inoperable. RHP products including valves, pilots and controls are designed and certified to be used as a system. Modifications to products which are not specifically authorized will void this warranty and could render the product to be unsafe. Burners, valves, parts, remotes, accessories, etc. used with this product must be RHP products or this warranty is void.

Warranted items will be repaired or replaced at RHP's sole discretion. This warranty **does not** cover labor or labor related charges, except as provided by separate specific written programs from RHP. All repair work must be performed by a qualified professional service person and requires prior approval of RHP.

RHP may require the defective product or part to be returned to the factory to determine the cause of failure. RHP will pay freight charges if the product or part is determined to be defective. This warranty does not cover breakage in shipment from our independent distributor to its customer if the damage is determined to have occurred during that shipment.

This warranty specifically excludes liability for **indirect, incidental**, or consequential damages. Some states and provinces do not allow the exclusion or limitation of incidental or consequential damages, so the above exclusion may not apply to you. This warranty gives you specified legal rights, and you may have other rights that vary from state to state or province.

For additional information regarding this warranty, or to place a warranty claim, contact the RHP dealer where the product was purchased.

When contacting your RHP dealer or the R.H. Peterson Co., please provide the following information:

- Your name, address, telephone number, e-mail
- Sales receipt showing where purchased and date purchased
- Model number, serial number of product, date code
- Relevant information: installer, additions, repairs, when defect was first noted

**TO REGISTER YOUR PRODUCT ONLINE GO TO: WWW.RHPETERSON.COM,
AND CLICK ON PRODUCT REGISTRATION. THANK YOU FOR YOUR PURCHASE.**