

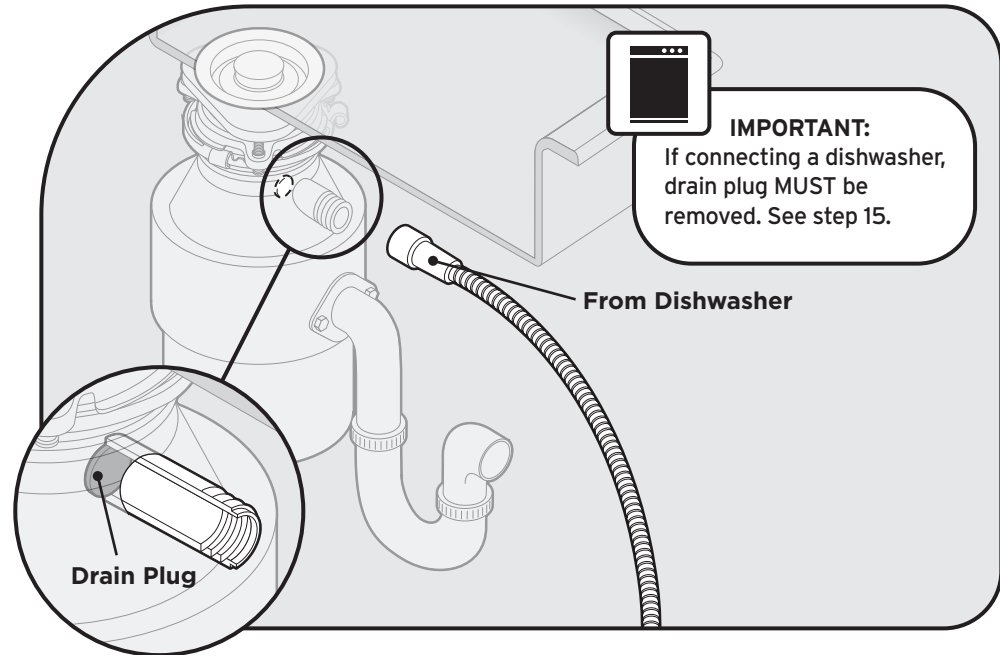


## Food Waste Disposer FWD-1 and FWD-2

©/TM/© 2023 InSinkErator. All rights reserved.

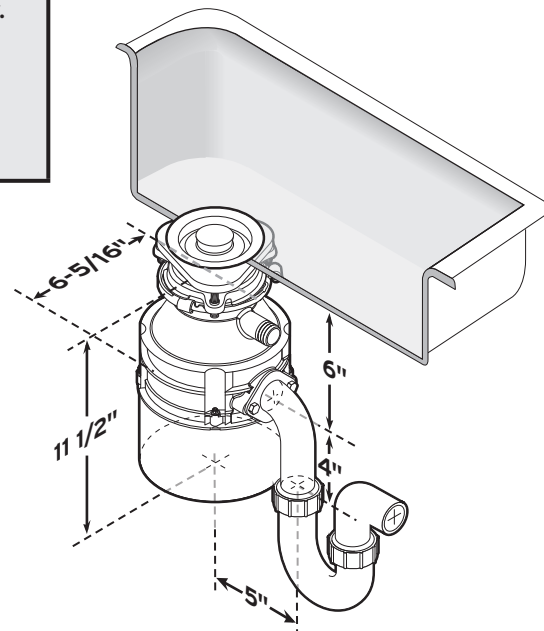
- ⚠ DANGER**  
Indicates a hazardous situation which, if not avoided, will result in death or serious injury.
- ⚠ WARNING**  
Indicates a hazardous situation which, if not avoided, could result in death or serious injury.
- ⚠ CAUTION**  
Indicates a hazardous situation which, if not avoided, could result in minor or moderate injury.
- NOTICE**  
is used to address practices not related to personal injury.
- SAFETY INSTRUCTIONS**  
(or equivalent) signs indicate specific safety-related instructions or procedures.

### Before You Begin



**⚠ WARNING**  
Read these instructions carefully. Failure to follow the Installation, Operating and User-Maintenance Instructions may result in personal injury or property damage.

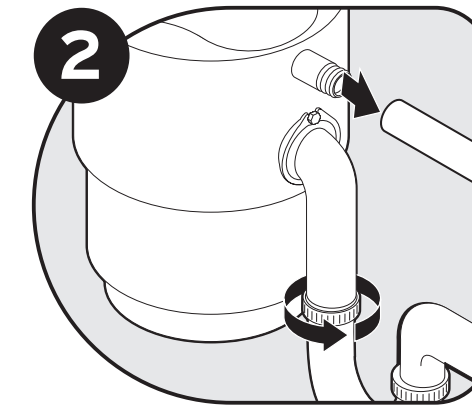
### Dimensions



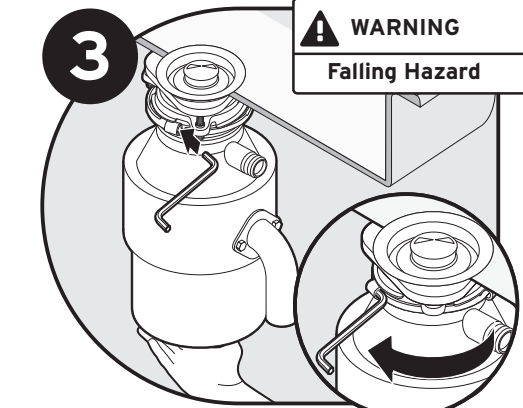
### Remove existing disposer

**⚠ WARNING**  
**SHOCK HAZARD**  
Turn off electric power at circuit breaker or fuse box.

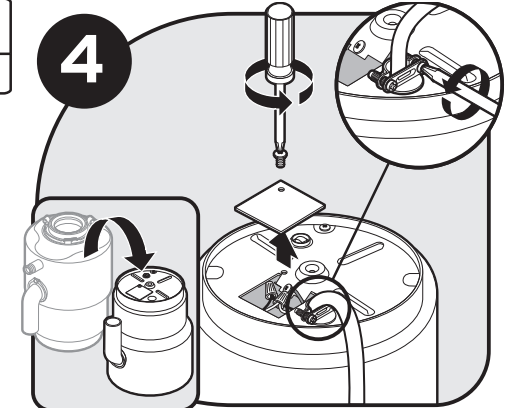
**1** If you are replacing an existing disposer, continue to Step 2.  
If there is no existing disposer, disconnect sink drain and skip to Step 9.



Turn off electrical power at circuit breaker or fuse box. Disconnect drain trap from waste discharge tube. Disconnect dishwasher if connected to the disposer.

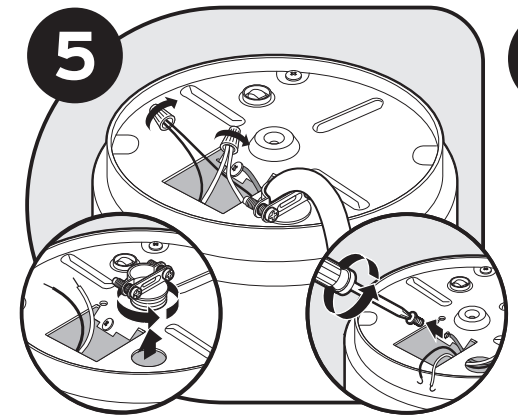
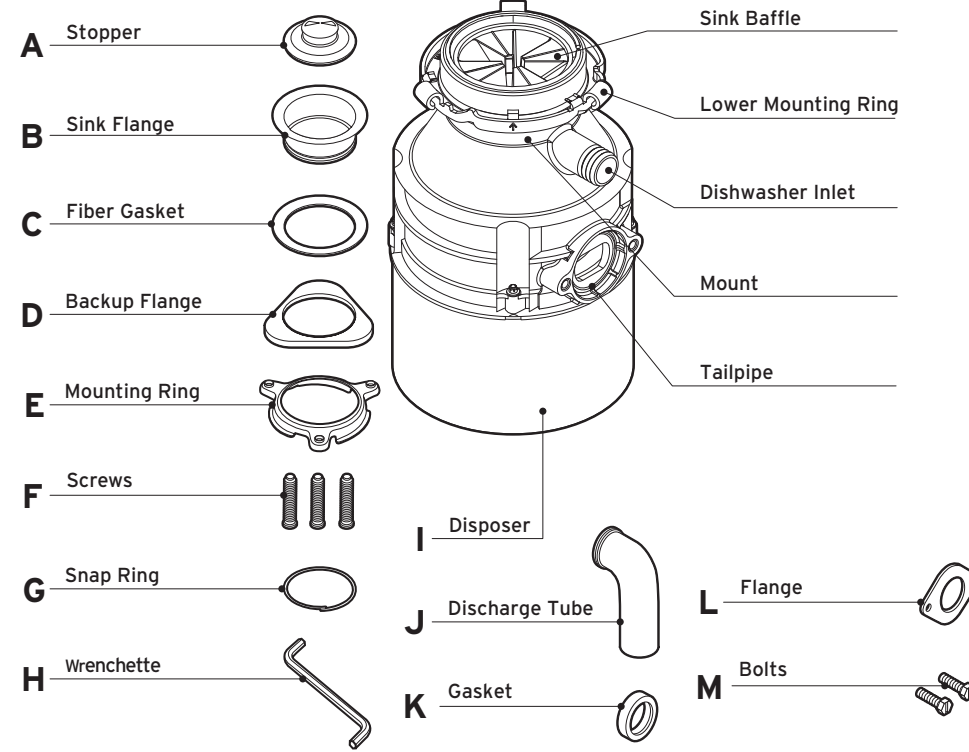


While supporting disposer, insert end of wrenchette (H) into right side of mounting lug, and turn. Disposer will fall free.



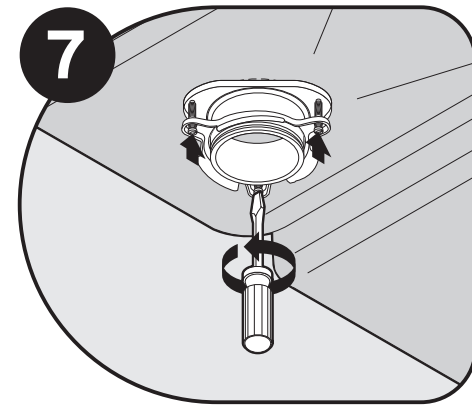
Flip disposer over and remove electrical cover plate. Save cable connector if applicable.

### Includes

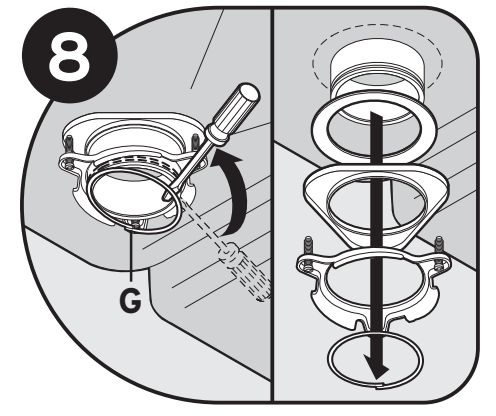


Disconnect the disposer wires from the electrical supply.

**6** Is the new disposer mounting the same as the old one?  
If YES, you may choose to skip to step 15.  
If NO, continue to step 7.

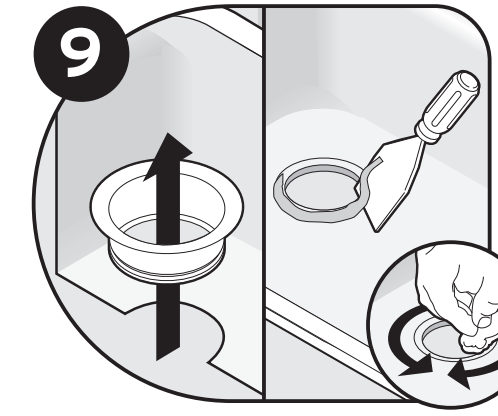


Using a flathead screwdriver, loosen the 3 screws on the mounting assembly.

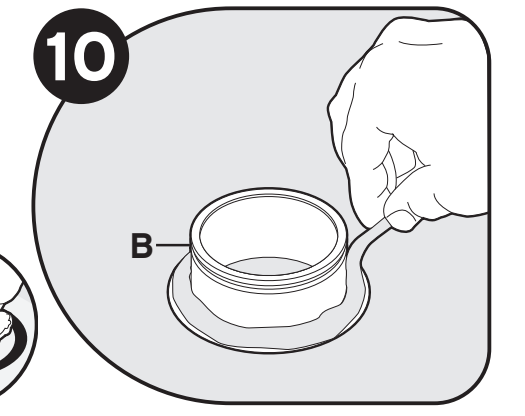


Using a flathead screwdriver, pry off the snap ring (G).

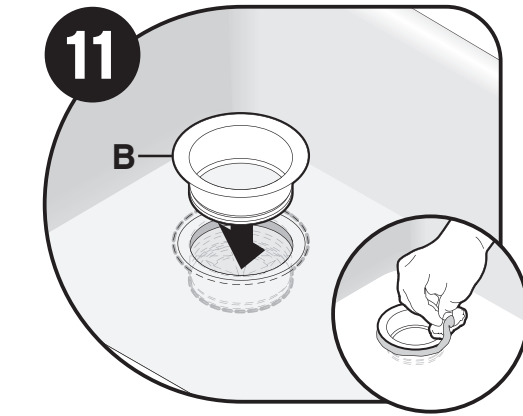
### Install flange in sink hole



Remove flange from sink. Remove old plumber's putty from sink with putty knife.



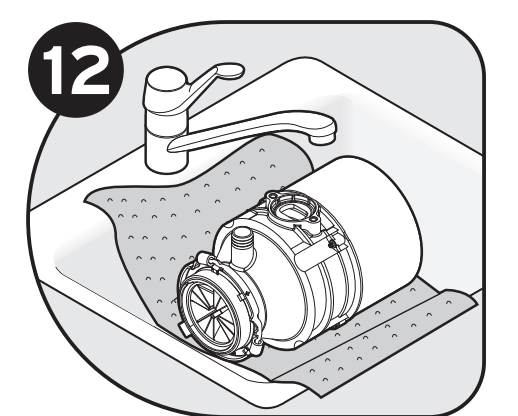
Evenly apply 1/2" thick rope of plumber's putty around sink flange (B).



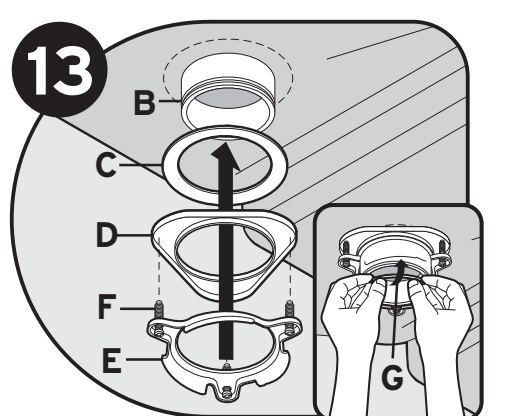
Press sink flange (B) firmly into sink drain. Remove excess putty.

**NOTICE**  
**Property Damage:** Risk of long/short term water leakage if not properly assembled.

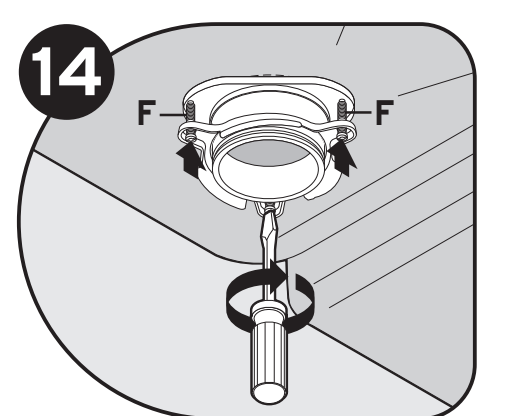
### Attach upper mounting assembly



Place a weight, such as the disposer, on the sink flange to hold it in place. Use a towel to avoid scratching sink.



Insert fiber gasket (C), backup flange (D) and mounting ring (E). Hold in place while inserting snap ring (G). Pull snap ring (G) open and press firmly until it snaps into place.



Tighten 3 mounting screws (F) evenly and firmly against backup flange.

**STOP!**  
If connecting a dishwasher, remove drain plug in step 15.

If not connecting a dishwasher, continue to step 16.

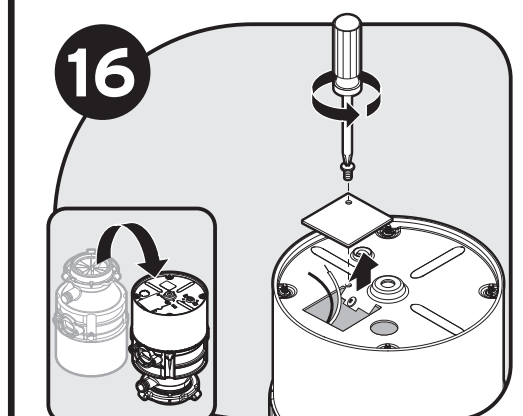
**IMPORTANT: Dishwasher connection only**

**NOTICE**  
If the dishwasher connection is made without removing the plug, the dishwasher may overflow.

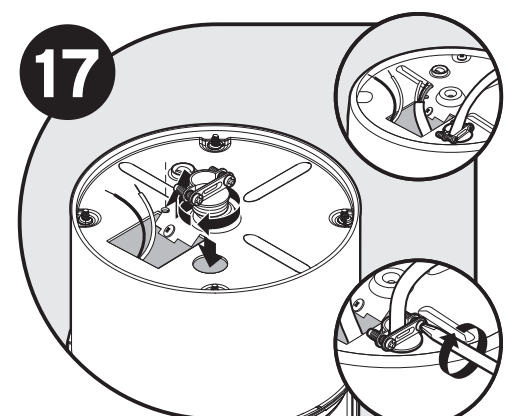


**NOTICE:** Drain plug cannot be replaced once it is knocked out. Turn disposer (I) onto side and knock out drain plug with screwdriver. Remove plug from inside of disposer with pliers.

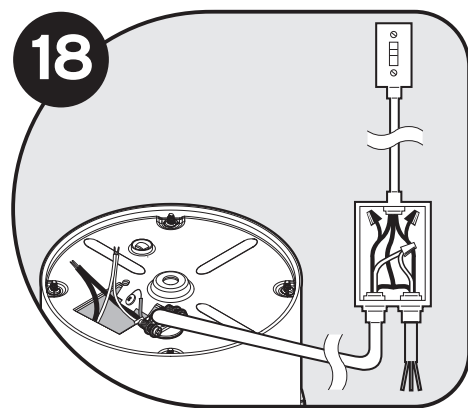
### Connect disposer to electrical supply



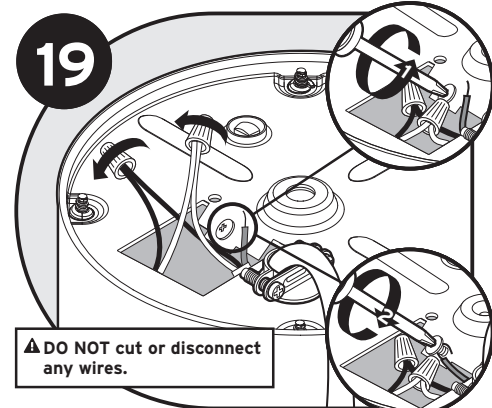
Turn disposer over and remove electrical cover plate. Pull out wires.



Insert cable connector (not included) and run electrical cable through access hole on bottom of disposer. Tighten cable connector.



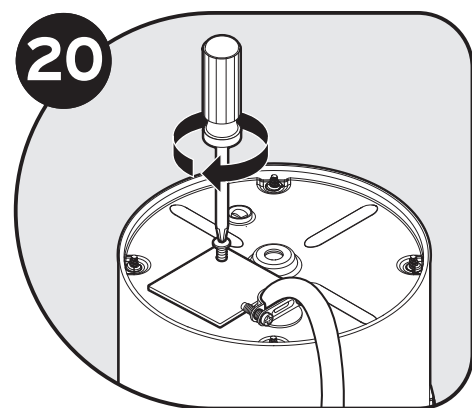
This disposer requires a switch with a marked "Off" position (wired to disconnect all ungrounded supply conductors) installed within sight of the disposer sink opening (1 hp minimum rating).



**DO NOT** cut or disconnect any wires.

Connect white wire from disposer to neutral (white) wire from power source. Connect black wire from disposer to hot (black, red) wire from power source with wire nuts (not included). Connect ground wire to green grounding screw. Unit must be grounded for safe and proper installation.

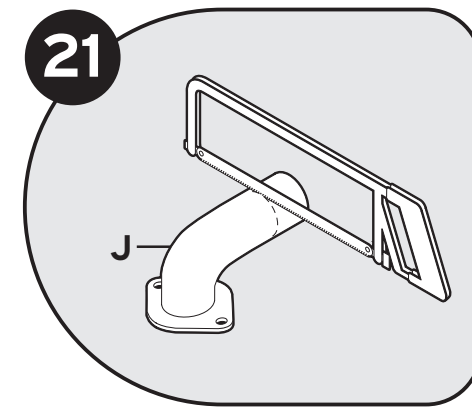
**WARNING**  
Improper grounding can result in electric shock hazard.



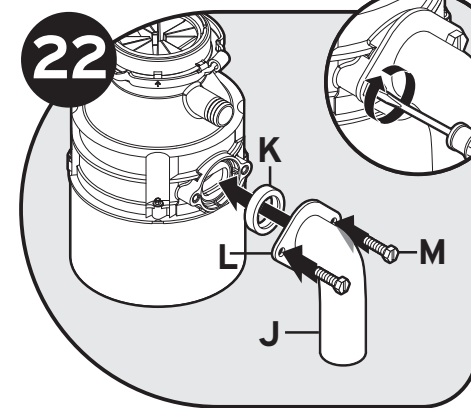
Push wires into disposer and replace electrical cover plate.

**NOTICE**  
**Property Damage Risk:** Do not remove or displace motor compartment insulation shield.

### Install discharge tube



You may need to trim discharge tube (J) to ensure proper fit.



Slide flange (L) over discharge tube (J). Insert gasket (K) into discharge outlet. Secure flange and discharge tube to disposer with two bolts (M). Although the supplied discharge tube is preferred, a straight discharge tube may be used.

### INSTRUCTIONS PERTAINING TO RISK OF FIRE, ELECTRIC SHOCK, INJURY TO PERSONS OR DAMAGE TO PROPERTY

#### IMPORTANT SAFETY INSTRUCTIONS

#### WARNING

**Personal Injury:** Do not position your head or body under disposer; unit could fall during removal or installation.

#### GROUNDING INSTRUCTIONS

**For all grounded, cord-connected disposers:** This disposer must be grounded to reduce the risk of electric shock in the event of a malfunction or breakdown. Grounding provides a path of least resistance for electric current. If your disposer did not include a factory installed power cord, use a cord having an equipment-grounding conductor and a grounding plug. (InSinkErator power cord accessory CRD-00 recommended.) The plug must be plugged into an outlet that is properly installed and grounded in accordance with all local codes and ordinances.

**For permanently connected disposers:** This disposer must be connected to a grounded, metal, permanent wiring system; or an equipment-grounding conductor must be run with the circuit conductors and connected to the equipment-grounding terminal or lead on the disposer.

#### WARNING

Improper connection of the equipment-grounding conductor can result in a risk of electric shock. Check with a qualified electrician or serviceman if you are in doubt as to whether the disposer is properly grounded. If the plug you are using does not fit the outlet, do not modify the plug or attempt to force the plug into the outlet - have a proper outlet installed by a qualified electrician.

- Do not attach ground wire to gas supply line.
- Disconnect power before installing or servicing disposer.
- If three-prong grounded plug is used, plug must be inserted into three-hole grounded receptacle.
- All wiring must comply with local electrical codes.
- Do not reconnect electrical current at main service panel until proper grounds are installed.

#### NOTICE

- Do not use plumber's putty on any other disposer connection other than sink flange. Do not use thread sealants or pipe dope. These may harm disposer and cause property damage.

### USER MAINTENANCE INSTRUCTIONS

#### CLEANING DISPOSER

Over time, food particles may accumulate in the grind chamber and baffle. An odor from the disposer is usually a sign of food buildup. To clean disposer:

- Place stopper in sink opening and fill sink halfway with warm water.
- Mix 1/4 cup baking soda with water. Turn disposer on and remove stopper from sink at same time to wash away loose particles.

#### RELEASING DISPOSER JAM

If motor stops while disposer is operating, disposer may be jammed. To release jam:

- Turn off disposer and water.
- Insert one end of wrenchette into center hole on bottom of disposer (see Figure A). Work wrenchette back and forth until it turns one full revolution. Remove wrenchette.
- Reach into disposer with tongs and remove object(s). Allow disposer motor to cool for 3 - 5 minutes, then lightly push red reset button on disposer bottom (see Figure B). (If motor remains inoperative, check service panel for tripped circuit breakers or blown fuses.)

Figure A

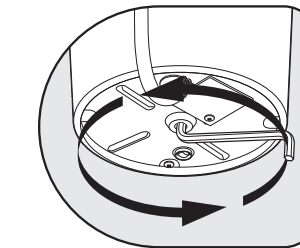
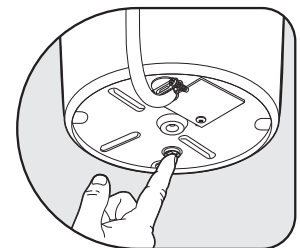


Figure B



### FOOD WASTE DISPOSER LIMITED WARRANTY

If your FOOD WASTE DISPOSER (Model FWD-1 or FWD-2) develops a defect in material or workmanship within one year from the date of purchase, it will be replaced over-the-counter, free of charge. This warranty does not cover a disposer which is misused, improperly installed, or used for anything other than normal private household use. In order to validate the warranty, your FOOD WASTE DISPOSER must be returned to the dealer from which it was purchased with one of the following: proof of purchase date, proof of installation date, or the date of manufacture as identified by your product serial number. This warranty gives you specific legal rights, and you may also have other rights, which vary from state to state.

#### What is not Covered

This limited warranty does not extend to and expressly excludes:

- Losses or damages or the inability to operate your FWD disposer resulting from conditions beyond the Manufacturer's control including, without limitation, accident, alteration, misuse, abuse, neglect, negligence (other than Manufacturer's), failure to install, maintain, assemble, or mount the FWD disposer in accordance with Manufacturer's instructions or local electrical and plumbing codes.
- Wear and tear expected to occur during the normal course of use, including without limitation, cosmetic rust, scratches, dents or comparable and reasonably expected losses or damages.

#### No Other Express Warranty Applies

THIS LIMITED WARRANTY IS THE SOLE AND EXCLUSIVE WARRANTY PROVIDED TO THE CUSTOMER IDENTIFIED ABOVE. NO OTHER EXPRESS WARRANTY OR IMPLIED WARRANTY, INCLUDING TO THE EXTENT APPLICABLE WARRANTIES OF MERCHANTABILITY OR FITNESS FOR A PARTICULAR PURPOSE, SHALL APPLY TO THE EXTENT LEGALLY PERMISSIBLE. ANY IMPLIED WARRANTIES THAT MAY BE IMPOSED BY LAW ARE LIMITED TO ONE YEAR, OR THE SHORTEST PERIOD ALLOWED BY LAW. SOME STATES AND PROVINCES DO NOT ALLOW LIMITATIONS OR EXCLUSIONS ON HOW LONG AN IMPLIED WARRANTY OF MERCHANTABILITY OR FITNESS LASTS, SO THE ABOVE LIMITATIONS OR EXCLUSIONS MAY NOT APPLY TO YOU.

In addition to the above exclusions, this limited warranty does not apply to FWD disposer installed in a commercial or industrial application. No employee, agent, dealer, or other person is authorized to alter this limited warranty or make any other warranty on behalf of Manufacturer. The terms of this limited warranty shall not be modified by the Manufacturer, the original owner, or their respective successors or assigns.

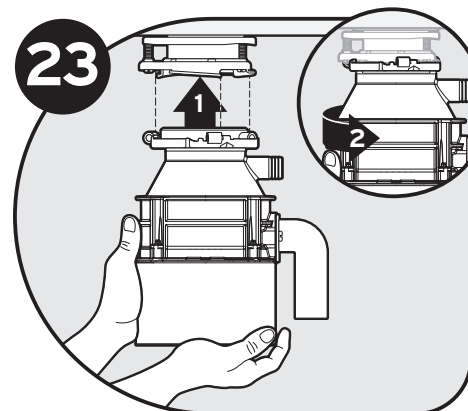
#### Limitation of Liability

TO THE EXTENT PERMITTED BY LAW, IN NO EVENT SHALL MANUFACTURER OR ITS AUTHORIZED SERVICE REPRESENTATIVES BE LIABLE FOR ANY INCIDENTAL, SPECIAL, INDIRECT, OR CONSEQUENTIAL DAMAGES, INCLUDING ANY ECONOMIC LOSS, WHETHER RESULTING FROM NONPERFORMANCE, USE, MISUSE OR INABILITY TO USE THE INSINKERATOR PRODUCT OR THE MANUFACTURER'S OR ITS AUTHORIZED SERVICE REPRESENTATIVE'S NEGLIGENCE. MANUFACTURER SHALL NOT BE LIABLE OR DAMAGES CAUSED BY DELAY IN PERFORMANCE AND IN NO EVENT, REGARDLESS OF THE FORM OF THE CLAIM OR CAUSE OF ACTION (WHETHER BASED IN CONTRACT, INFRINGEMENT, NEGLIGENCE, STRICT LIABILITY, OTHER TORT OR OTHERWISE), SHALL MANUFACTURER'S LIABILITY TO YOU EXCEED THE PRICE PAID BY THE ORIGINAL OWNER FOR THE INSINKERATOR PRODUCT.

The term "consequential" damages shall include, but not be limited to, loss of anticipated profits, business interruption, loss of use or revenue, cost of capital or loss or damage to property or equipment.

Some states do not allow the exclusion or limitation of incidental or consequential damages, so the above limitation may not apply to you. This limited warranty gives you specific legal rights and you may also have other rights which vary from state to state.

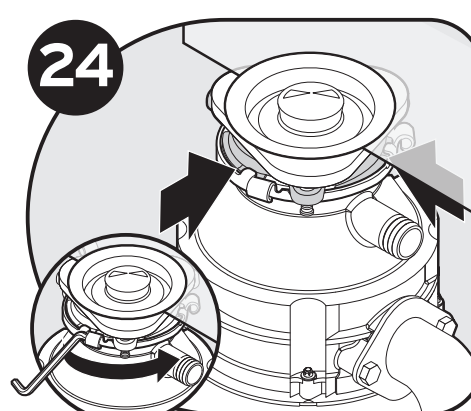
### Connect disposer to mounting assembly with Lift & Latch™



Lifting disposer from the bottom (1), hang disposer by aligning 3 mounting tabs with slide-up ramps on mounting ring and (2) slightly turn disposer counter-clockwise.

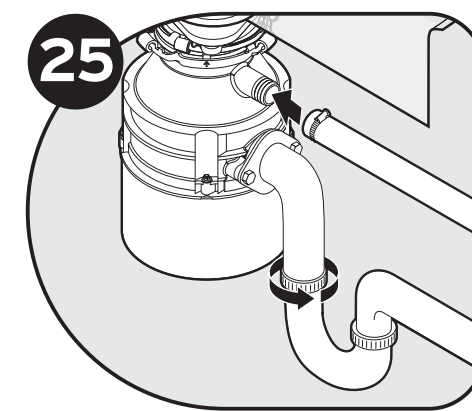
**WARNING**  
Do not position your head or body under disposer; unit could fall during removal or installation.

**Property Damage:** Risk of long/short term water leakage if all three mounting tabs are not properly engaged on all slide-up ramps and locked in place past the ridges.

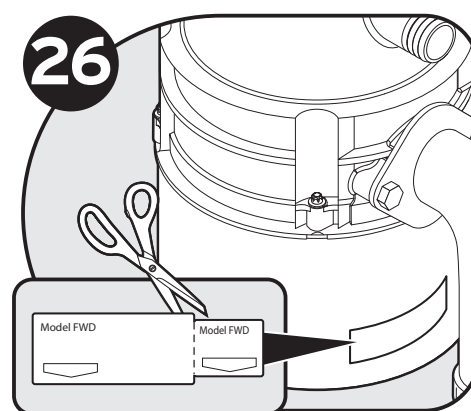


Using a 1/4" allen wrench or screwdriver, turn mounting ring until all 3 mounting tabs latch over the ridges on the slide-up ramps.

**CAUTION**  
To avoid leaks and/or potential falling hazard, make sure all 3 mounting tabs are latched over ridges.



Rotate disposer to align with plumbing and reconnect plumbing (and dishwasher reconnection if used.)



Detach removable portion of spec label and place on a visible location.

**WARNING** When using electric appliances, basic precautions are always to be followed, including:

- Read all instructions before using the appliance.
- To reduce the risk of injury, close supervision is required when an appliance is used near children.
- Do not put fingers or hands into a waste disposer.
- Turn the power switch to the off position before attempting to clear a jam, or removing an object from the disposer.
- When attempting to loosen a jam in a waste disposer, use a wooden spoon to dislodge jam.
- When attempting to remove objects from a waste disposer, use long-handled tongs or pliers.
- Do not put the following into a disposer: clam or oyster shells, caustic drain cleaners or similar products, glass, china, or plastic, metal (such as bottle caps, steel shot, tin cans, or utensils), hot grease or other hot liquids.
- When not operating a disposer, leave the stopper in place to reduce the risk of objects falling into the disposer.
- This product is designed to dispose of normal household food waste; inserting materials other than food waste into disposer could cause personal injury and/or property damage.
- To reduce the risk of injury and/or property damage, do not use the sink containing the disposer for purposes other than food preparation (such as baby bathing or washing hair).
- Do not dispose of the following in the disposer: paints, solvents, household cleaners and chemicals, automotive fluids, plastic wrap.
- FIRE HAZARD:** Do not store flammable items such as rags, paper or aerosol cans near disposer. Do not store or use gasoline or other flammable vapors and liquids in vicinity of disposer.
- LEAK HAZARD:** Regularly inspect disposer and plumbing fittings for leaks, which can cause property damage and could result in personal injury.

#### SAVE THESE INSTRUCTIONS

#### OPERATING INSTRUCTIONS

- Remove stopper from sink opening and run cold water.
- Turn on disposer.
- Slowly insert food waste into disposer. **WARNING!** Position stopper to minimize possible ejection of material while grinding.
- After grinding is complete, turn disposer off and run water for a few seconds to flush drain line.

#### DO...

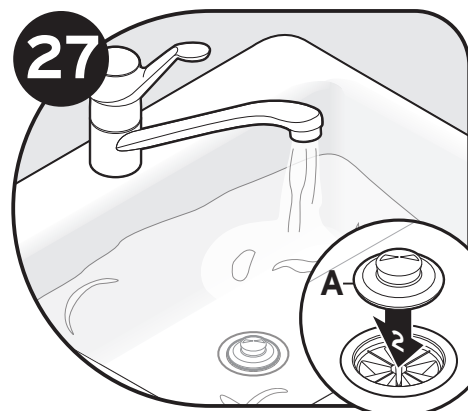
- First turn on cold water and then turn on the disposer. Continue running cold water for several seconds after grinding is completed to flush the drain line.
- Grind hard materials such as small bones, fruit pits, and ice. A scouring action is created by the particles inside the grind chamber.
- Grind peelings from citrus fruits to freshen up drain smells.
- Use a disposer cleaner, degreaser, or deodorizer as necessary to relieve objectionable odors caused by grease build-up.

#### NOTICE

Failure to flush the disposer properly may result in damage to the disposer and/or property damage.

#### DON'T...

- DON'T POUR GREASE OR FAT DOWN YOUR DISPOSER OR ANY DRAIN. IT CAN BUILD UP IN PIPES AND CAUSE DRAIN BLOCKAGES. PUT GREASE IN A JAR OR CAN AND DISPOSE IN THE TRASH.**
- Don't use hot water when grinding food waste. It is OK to drain hot water into the disposer between grinding periods.
- Don't fill disposer with a lot of vegetable peels all at once. Instead, turn the water and disposer on first and then feed the peels in gradually.
- Don't grind large amounts of egg shells or fibrous materials like corn husks, artichokes, etc., to avoid possible drain blockage.
- Don't turn off disposer until grinding is completed and only sound of motor and water is heard.



Insert (A) into sink opening, fill sink with water, remove (A) to drain, then look under sink for leaking water. Reconnect electrical power at fuse box or circuit breaker box.

**Property Damage:** Risk of long/short term water leakage if not properly assembled.

You may need to trim tube for proper fit. To reduce the potential of leaking, the drain line must be properly pitched (not less than 1/4" of pitch per foot of run) from the disposer to the drain connection, with the drain connection being lower than the disposer discharge. Failure to do so could lead to premature corrosion or leaking due to standing water left in the disposer.