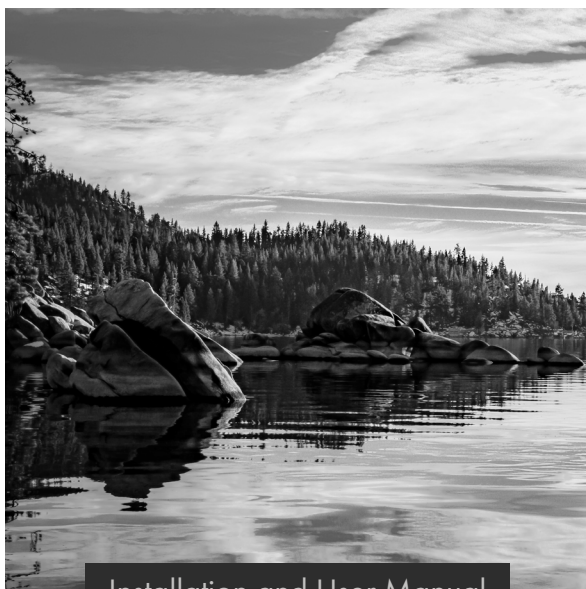


# ZLINE

ATTAINABLE LUXURY®



Installation and User Manual

## TOUCHLESS FAUCETS

[zlinekitchen.com](http://zlinekitchen.com)



ZLINE Kitchen and Bath provides Attainable Luxury, where the kitchen and bath of your dreams is never out of reach. Through our unique designs and unparalleled quality, we're dedicated to providing you an elevated experience in the heart of your home. With an endless selection of features and finishes, our inspiration is your reality.

**ZLINE**  
ATTAINABLE LUXURY®



ZLINE is fueled by a passion for innovation; A relentless pursuit of bringing the highest end luxury designs and professional features into everyone's homes.

Because we continually strive to improve our products, we may change specifications and designs without prior notice.

Scan the QR code to view the most up-to-date version of the Installation Manual and User Manual.

**⚠ WARNING:** This product can expose you to chemicals including nickel, which is known to the State of California to cause cancer. For more information, go to [www.P65Warnings.ca.gov](http://www.P65Warnings.ca.gov).

# TABLE OF CONTENTS

IMPORTANT SAFETY INFORMATION . . . . .	1
TOUCHLESS BATH FAUCETS . . . . .	3
Before Installation. . . . .	3
Installation. . . . .	4
Operation . . . . .	7
TOUCHLESS KITCHEN FAUCETS . . . . .	8
Before Installation. . . . .	8
Installation. . . . .	9
Operation . . . . .	13
CARE AND MAINTENANCE . . . . .	14
TROUBLESHOOTING . . . . .	15
WARRANTY . . . . .	16

# IMPORTANT SAFETY INFORMATION

## BEFORE INSTALLATION

- Make sure that the cold and hot water lines are turned off.
- Wrap all threaded connections with plumber's tape. Always wrap in a clockwise direction.
- Cover your drain to avoid losing parts.
- Do not disassemble the main faucet body, as it has been installed and commissioned correctly and precisely before delivery to the factory.
- To keep the faucet from jamming, flush the water pipe before installation.
- Do not mix different types of batteries or age of batteries.

**Operating conditions:** Working pressure at 7 psi–120 psi (0.05 MPa–0.80 MPa) (including cold and hot water pressure) with applicable water temperature: 39.2 °F–194 °F (4 °C–90 °C).

**Water supply line length:** 27 1/2" (699 mm)

## INSTALLATION PREPARATION

1. Shut off the water and let the water in the current faucet drain.
  2. The tools needed for each installation are included at the beginning of each section.
  3. Loosen the hardware that keeps the current faucet in place. Remove faucet.
- If soldering the water connections when installing the faucet, remove the O-rings, cartridges, and washers before applying any heat.
  - Protect your eyes when cutting or soldering.
  - Do not over tighten screws/nuts. Finger tighten, then use a wrench/Phillips head screwdriver to tighten the fixing screw/nut until snug.

# IMPORTANT SAFETY INFORMATION

## TOOLS NEEDED:

- Wrench
- Phillips head screwdriver
- Pliers
- Plumber's tape

TIME REQUIRED: +/- 45 minutes

## LEGEND:



Hot water



Cold water



Grease



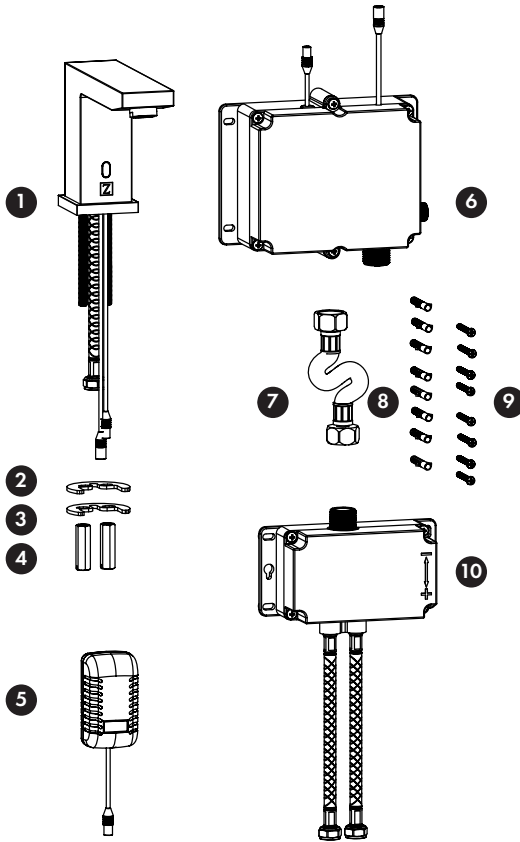
Warning



Plumber's tape

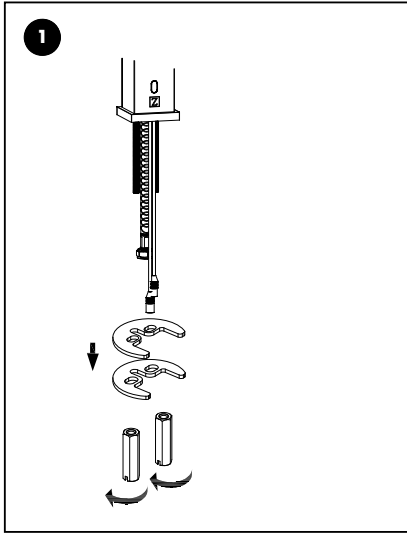
# TOUCHLESS BATH FAUCETS

## BEFORE INSTALLATION

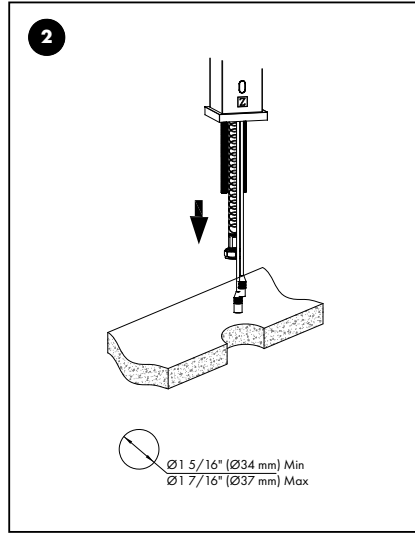


1. Body
2. Washer
3. Washer
4. Nut
5. AC Power
6. Control box
7. Connect hose
8. Wall anchor
9. Screws
10. Thermostatic valve

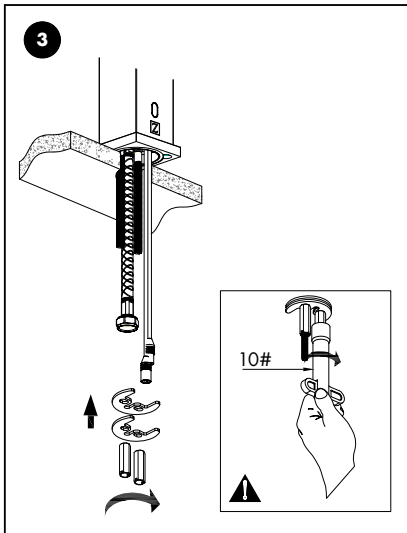
# TOUCHLESS BATH FAUCETS INSTALLATION



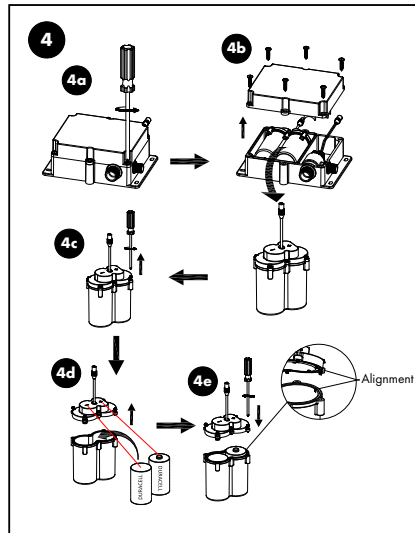
Loosen the fixing nut and washers and put aside.



Mount faucet to countertop.

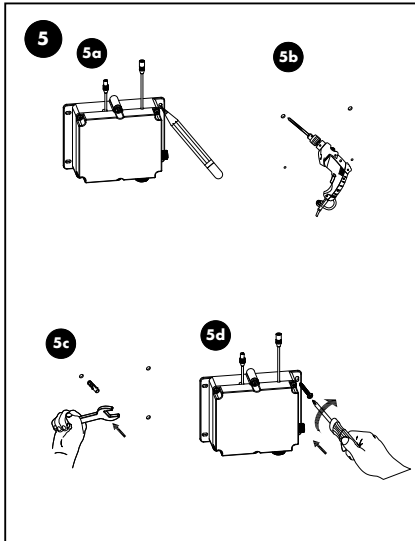


Reinstall the washers underneath the countertop and tighten the nuts to secure the faucet in place.

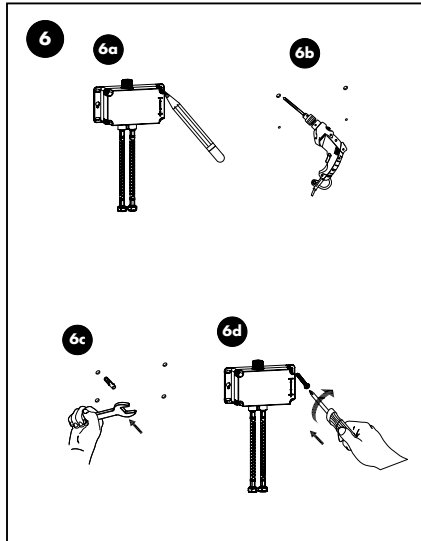


Remove the screws from the control box and remove the cover. Remove the battery box. Use a screwdriver to remove the lid from the battery box then install the batteries. Use care not to mix different types of batteries or age of batteries.

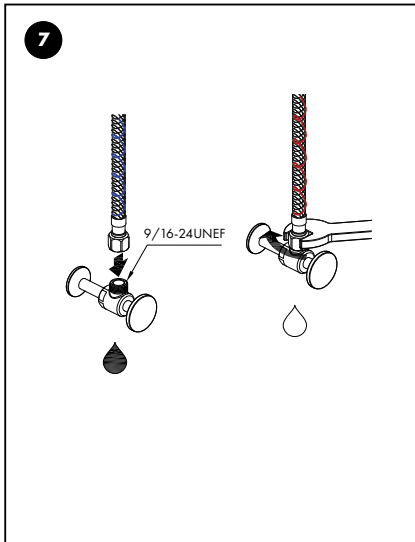
# TOUCHLESS BATH FAUCETS INSTALLATION



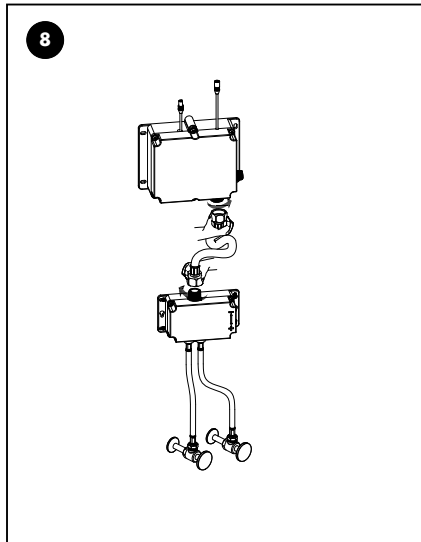
Use the provided screws and wall anchors if necessary to mount the control box in a location near the faucet.



Use the provided screws and wall anchors if necessary to mount the thermostatic valve near the control box.

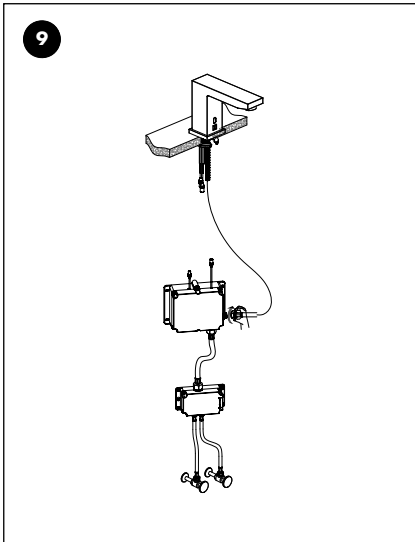


Secure the hoses to the hot (red) and cold (blue) lines appropriately. Carefully apply thread tape counter-clockwise to the water tap before installing water hoses.

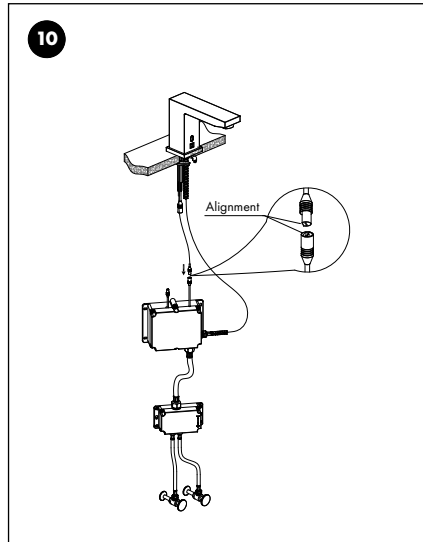


Tighten the connections between the different elements.

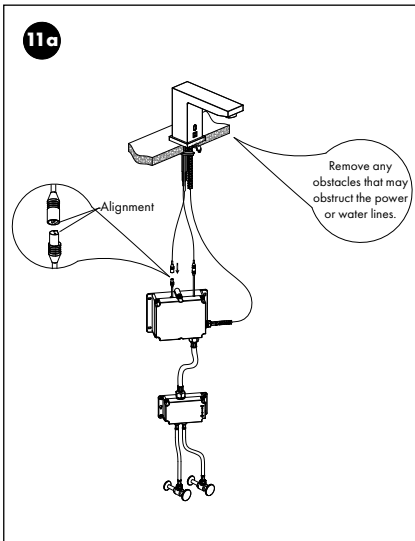
# TOUCHLESS BATH FAUCETS INSTALLATION



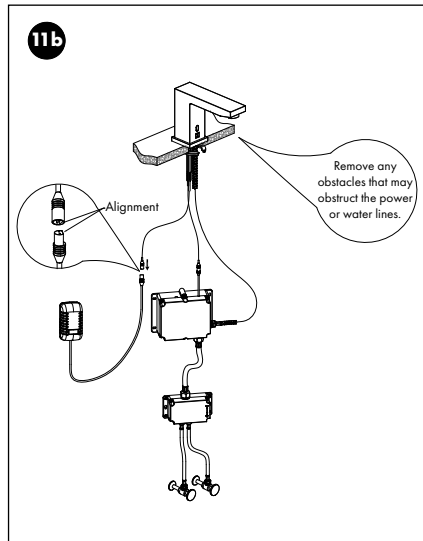
Attach the hose to the opening in the control box.



Attach the sensor wire to the opening in the control box.



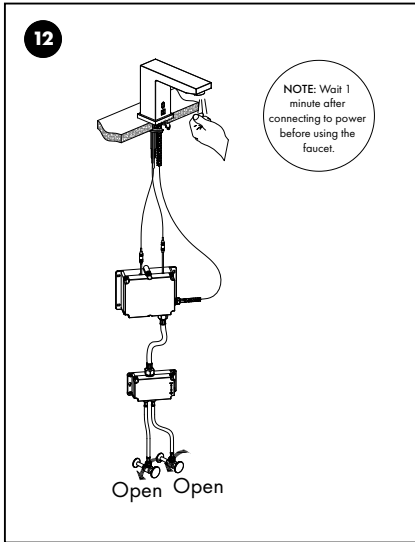
Attach the female connection of the faucet to the male connection of the control box.



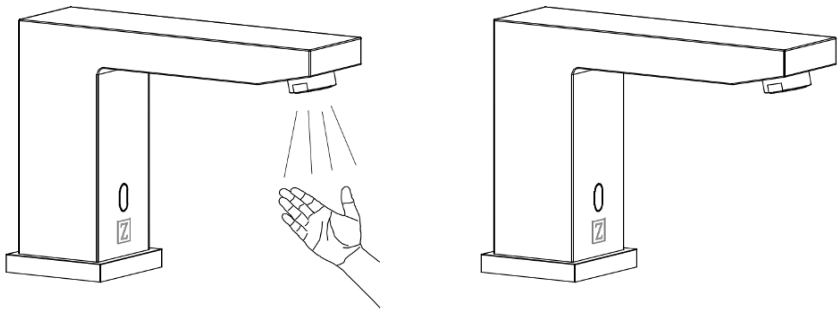
Attach the female connection of the faucet to the male connection of the AC power.

# TOUCHLESS BATH FAUCETS

## OPERATION

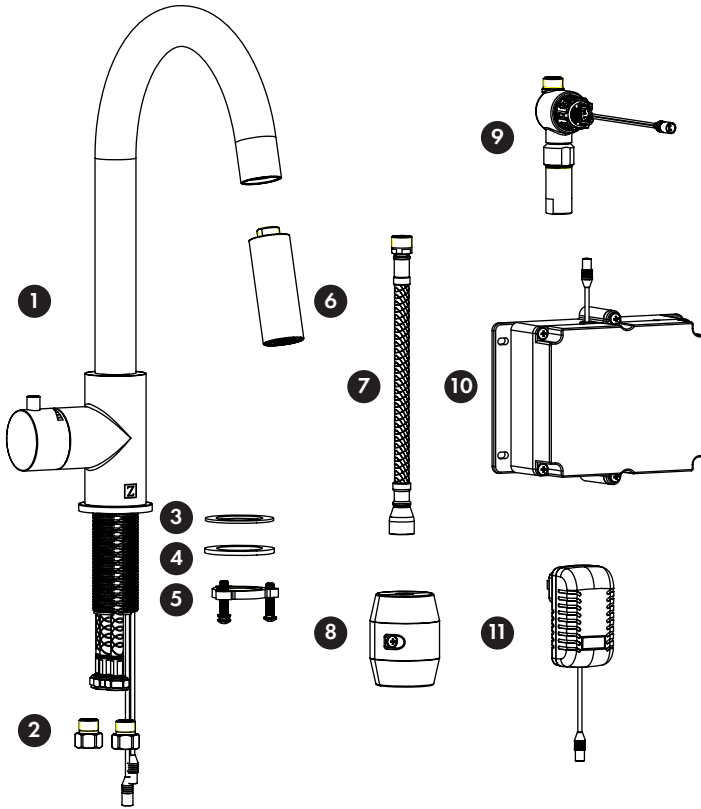


After installing the hardware and electrical components, let the system sit for at least a minute before testing the water. To test the water, turn on the faucet and check for leaks.



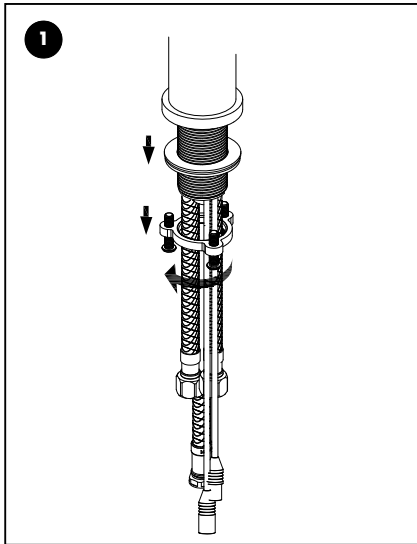
- To turn on the faucet, place your hand within 4 1/2" (114 mm) from the faucet sensor.
- To turn off the faucet, ensure your hand is farther than 4 1/2" (114 mm) from the faucet sensor.
- **NOTE:** Once the faucet is turned on, it will automatically turn off after 1 minute. To re-trigger the sensor, we recommend ensuring your hand is farther than 4 1/2" (114 mm) from the sensor, then placing it back within 4 1/2" (114 mm) from the sensor.

# TOUCHLESS KITCHEN FAUCETS BEFORE INSTALLATION

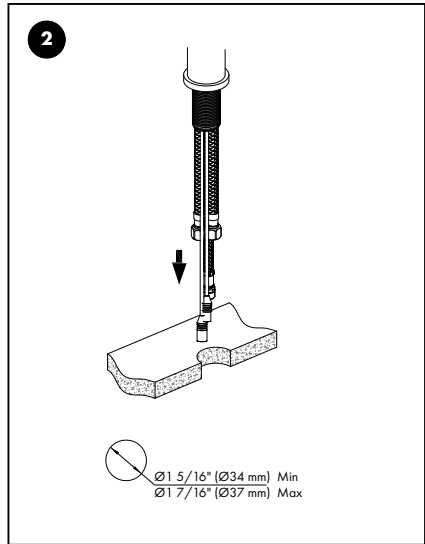


1. Body
2. Check valve assembly
3. Rubber washer
4. Metal washer
5. Fixing nut and screws
6. Spray head
7. Water line
8. Weight
9. Thermostatic valve
10. Control box
11. AC power

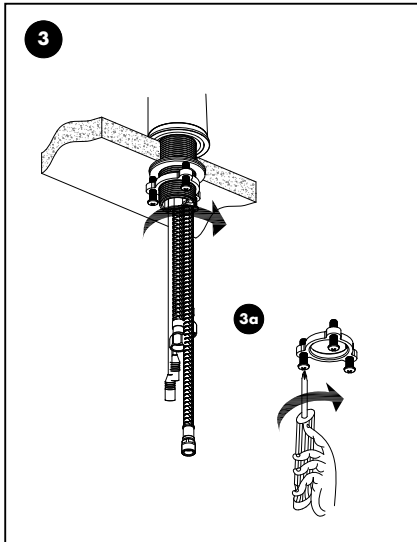
# TOUCHLESS KITCHEN FAUCETS INSTALLATION



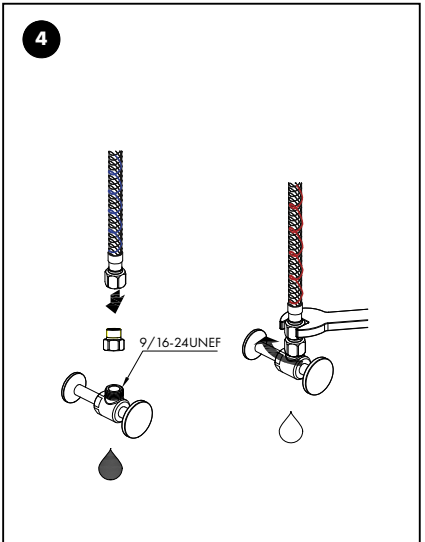
Loosen the fixing nut and screws and put aside.



Mount faucet to countertop.

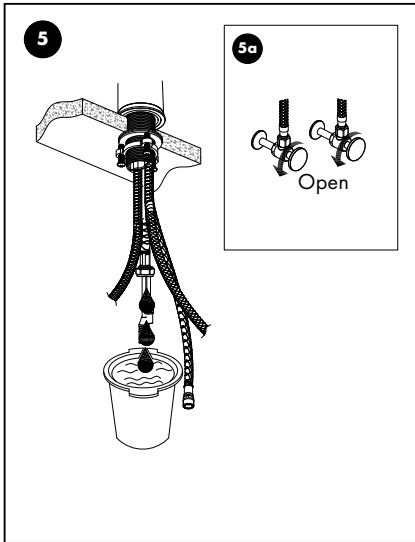


Reinstall the washers underneath the countertop and tighten the nut and screws to secure the faucet in place.

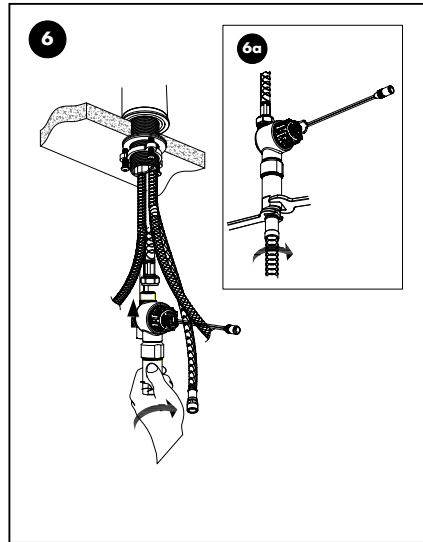


Secure the hoses to the hot and cold lines appropriately. Carefully apply thread tape counter-clockwise to the water tap before installing water hoses.

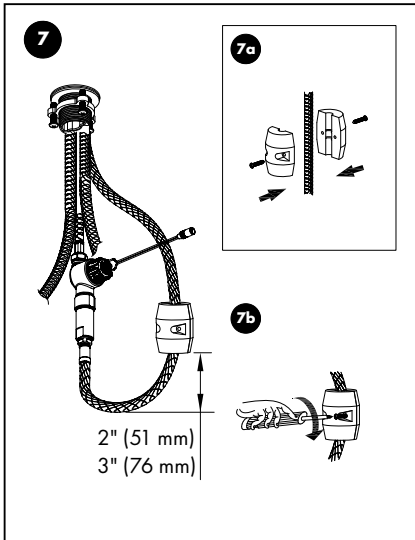
# TOUCHLESS KITCHEN FAUCETS INSTALLATION



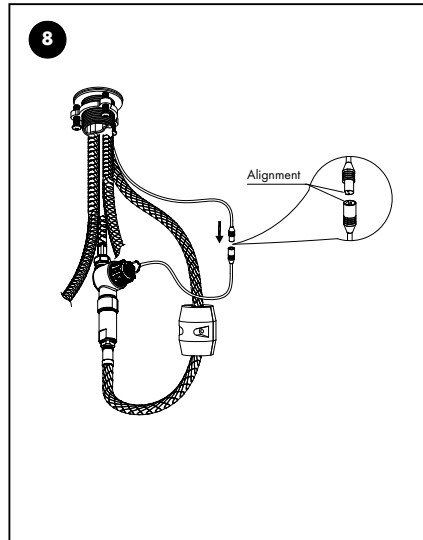
Test the faucet.



Connect the thermostatic valve.

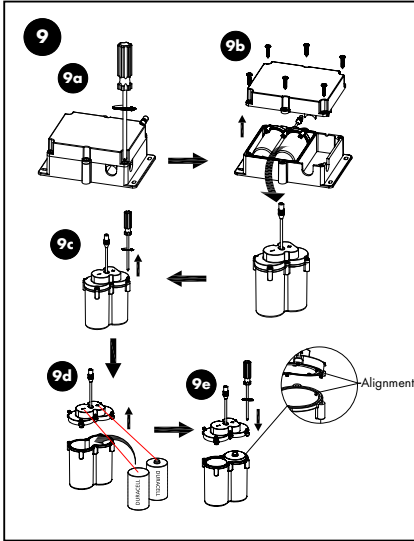


Attach the weight to the hose and adjust as needed.

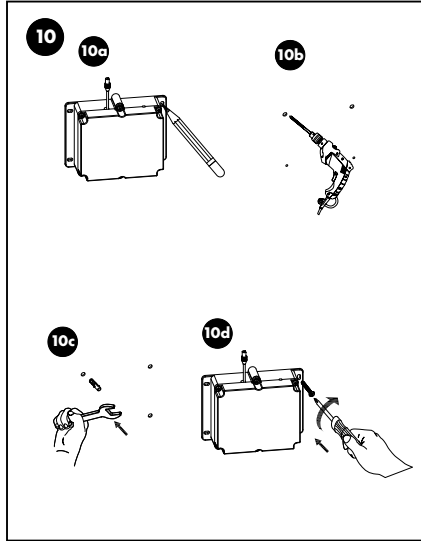


Connect the faucet to the thermostatic valve.

# TOUCHLESS KITCHEN FAUCETS INSTALLATION

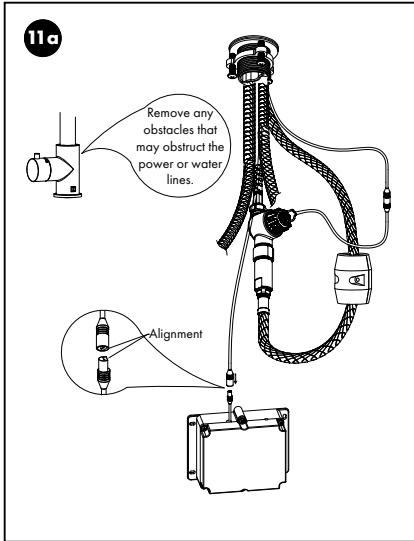


Remove the screws from the control box and remove the cover. Remove the battery box. Use a screwdriver to remove the lid from the battery box then install the batteries. Use care not to mix different types of batteries or age of batteries.

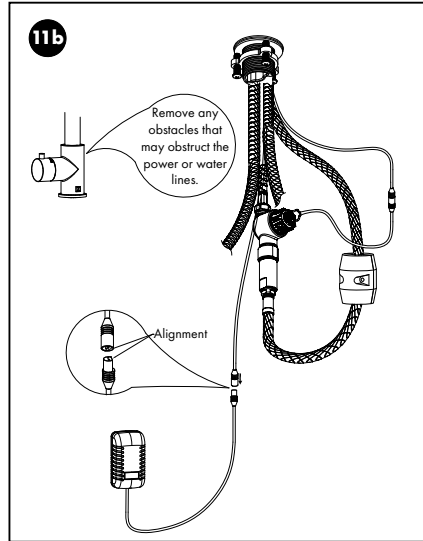


Use the provided screws and anchors as needed to mount the control box in a location near the faucet.

# TOUCHLESS KITCHEN FAUCETS INSTALLATION



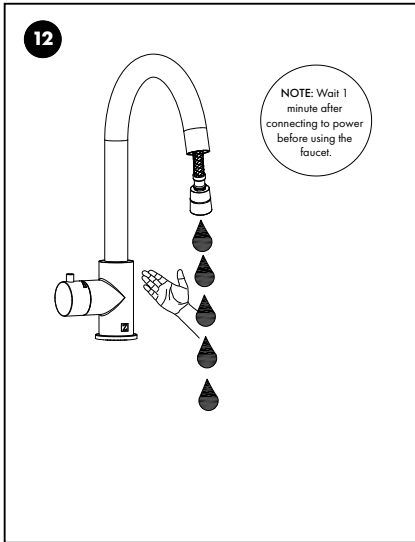
Plug the male connection of the control box into the female connection of the faucet. If no wall outlet is available, the ZLINE Touchless Faucet can be powered using the included battery box.



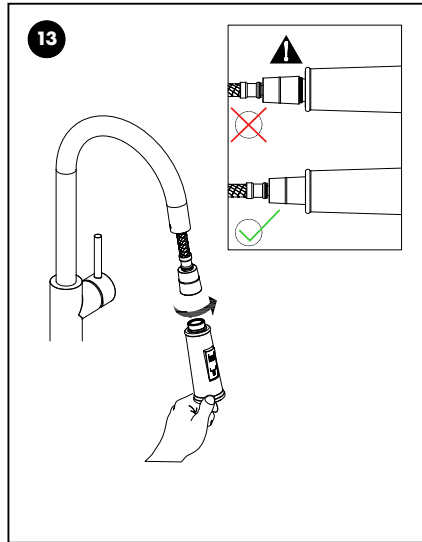
Connect to the plug. If an outlet is available, the ZLINE Smart Faucet can be powered from the included AC wall adapter instead of using the included battery box. To test the water, turn on the faucet and check for leaks.

# TOUCHLESS KITCHEN FAUCETS

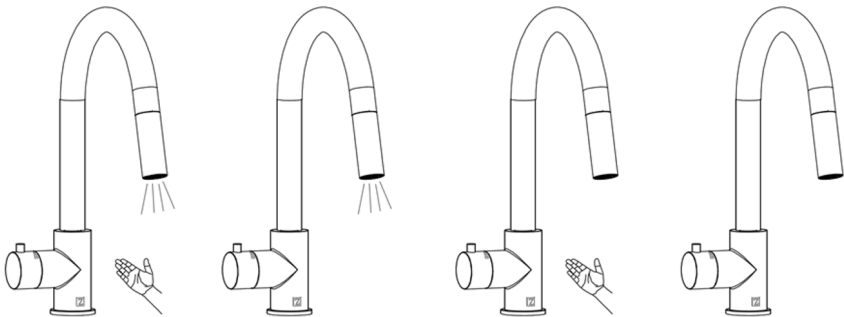
## OPERATION



After installing the hardware and electrical components, let the system sit for at least a minute before testing the water.



Make sure that the spray head is properly secured.



- To turn on the faucet, place your hand within 7" (178 mm) from the faucet sensor.
- To turn off the faucet, ensure your hand is farther than 7" (178 mm) from the faucet sensor.
- **NOTE:** Once the faucet is turned on, it will automatically turn off after 3 minutes. To re-trigger the sensor, we recommend ensuring your hand is farther than 7" (178 mm) from the sensor, then placing it back within 7" (178 mm) from the sensor.

# CARE AND MAINTENANCE

To keep the product clean and shining, follow the steps below:

1. Rinse clean with water and dry with a soft cloth.
2. Do not clean with soaps, acid, polish, abrasives, or harsh cleaners.
3. Do not use cloths with a coarse surface.
4. Unscrew the aerator and clean when necessary.

# TROUBLESHOOTING

PROBLEM	POSSIBLE CAUSE	SOLUTIONS
There is leakage under the handle.	The locking nut has come loose.	Unscrew the lever on the handle by hand. Loosen set screw with a hex wrench. Remove the handle and unscrew trim cap by hand. Tighten locking nut with an adjustable wrench.
Water will not shut off completely.	Cartridge may be defective.	Unscrew the lever on the handle by hand. Loosen set screw with a hex wrench. Remove the handle and unscrew trim cap by hand. Unscrew the locking nut with an adjustable wrench. Remove ceramic disc cartridge. Check for cracks.
There is a leak between the spray head and the hose.	The spray head may be loose or the washer is not seated correctly in the hose connection.	Tighten the spray head by hand until snug. Make sure the washer is seated correctly.

# WARRANTY

## COVERAGE

ZLINE Kitchen and Bath (“ZLINE”) plumbing products have a limited lifetime warranty from the original purchase date for the original purchaser of the product.

ZLINE warranty periods begin from the original date of product delivery and solely cover the original purchaser of the product, delivered new and in its original carton. ZLINE will provide free-of-charge, non-consumable replacement parts for the components that failed due to manufacturing defects. It is the responsibility of the customer to install all replacement parts, as ZLINE does not perform service repairs on its plumbing products.

ZLINE’s liability is limited to the original purchase price of the product. Additional injuries, losses, damages, or other inconveniences caused by product malfunction or defects in materials are not covered under the terms of this warranty.

## TERMS

ZLINE warranties apply only to the original purchaser of a ZLINE product installed for normal residential use. This is defined as a single-family, residential dwelling in a non-commercial setting. Any warranty claim stemming from installation, operation, or any other use within a commercial setting is not covered under this limited warranty.

Commercial settings include, but are not limited to: schools, churches, hotels, restaurants, vacation rentals such as Airbnb, daycare centers, private clubs, fire stations, common areas in multi-family dwellings, nursing homes, food service locations, and institutional food service locations such as hospitals or correctional facilities.

This warranty is non-transferable and will not under any circumstance be extended based on the date of installation — the warranty period takes effect from the date of delivery and only covers the original purchaser. The warranty applies only to products installed in the contiguous United States and the District of Columbia.

Out-of-pocket payments will not be reimbursed for replacement parts unless prior approval is received from ZLINE. Unapproved out-of-pocket payments for parts will not be reimbursed. Out-of-pocket payments for any type of service will not be reimbursed, as ZLINE does not perform service repairs on its plumbing products. All warranty procedures must be followed to maintain warranty coverage.

# WARRANTY

If ZLINE is unable to replace the defective part after a reasonable number of attempts, ZLINE reserves the right to offer to replace the product or provide the original purchaser a full refund of the purchase price of the product (not including installation, removal, or other charges that were not included in the original purchase price).

The original purchaser of the product must provide the original proof of purchase, including the purchase date, when filing a claim to obtain replacement parts or refunds. Additionally, the original purchaser of the product must provide the serial number of the product when filing a claim to obtain replacement parts or refunds.

This warranty shall not apply to any ZLINE product in which the original factory serial number has been removed, altered, or cannot be readily determined for any reason. Further, ZLINE is not responsible for damage resulting from, but not limited to: shipment, delivery, or improper installation; negligence or improper maintenance, misuse, or abuse of the product; unauthorized alteration, modification, or tampering with the product; accident, fire, floods, pest infestations, pandemics, natural disasters, or any other unpreventable or unexplained acts of nature, commonly referred to as "acts of God"; water leaks or water damages caused by improper water supply or water connections associated with installation or disassembly of the product; and service to correct installation not in accordance with the instructions contained in ZLINE's product manuals and/or with local government codes.

Additionally, this plumbing warranty does not apply to aesthetic damage, scratches, or natural wear caused by normal use; second-hand, open box products, or products purchased from an unauthorized retailer; consumable parts including, but not limited to, rough in valves, aerators, diverter handles, sprayers, spouts, hoses, and flange covers; and damages, problems, or any type of performance-related issues stemming from alteration or tampering with the product, including, but not limited to, painting stainless steel, black stainless, Satin Stainless Steel, or any other finishes or any portion of the product's interior or exterior.

Information contained within ZLINE's installation and user manuals, in addition to product information included on ZLINE's website and all related digital listings, do not cover every possible condition and situation that may occur during the installation or operation of ZLINE products.

# WARRANTY

ZLINE reserves the right to make changes at any time to its products when considered safe, necessary, and useful. Always check the ZLINE website for the most up-to-date version of its product manuals: [www.zlinekitchen.com/pages/manuals](http://www.zlinekitchen.com/pages/manuals).

Do not install or operate any ZLINE product if it has missing or broken parts or if it arrives damaged due to shipping. If ZLINE products arrive damaged, contact ZLINE Customer Experience at 1-614-777-5004 for help. Failure to report a damaged appliance prior to installation or operation may void the warranty. ZLINE does not perform service repairs on its plumbing products. ZLINE disclaims responsibility for damage or injury caused by improper installation or use of any of its products.

# WARRANTY



## SERVICE

For warranty service, please contact our Customer Service team at 1-614-777-5004 or visit [www.zlinekitchen.com/contact](http://www.zlinekitchen.com/contact) to utilize our online Customer Experience Portal.



Scan the QR code to view the most up-to-date version of our user manual and installation guide.



Need to purchase a part or accessory for your ZLINE product?  
Visit [www.zlineparts.com](http://www.zlineparts.com), ZLINE's official parts distribution partner.

2.0.2

[zlinekitchen.com](http://zlinekitchen.com)

1-614-777-5004

[contact@zlinekitchen.com](mailto:contact@zlinekitchen.com)

**ZLINE**  
ATTAINABLE LUXURY®