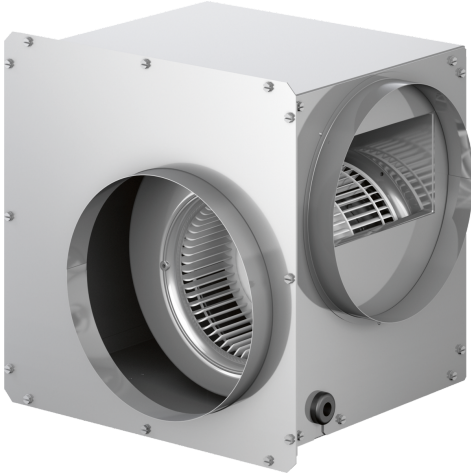


## 800 Series, Integral blower DHG602DUC



## 600 CFM Flexible Blower Can Mount To Downdraft Or Be Used As An Inline Blower, And Can Be Rotated To Exhaust Downward Or To Sides

- 600 CFM on High Speed

Product group: ..... Accessory  
 Brand: ..... Bosch  
 Product name / series name:  
 SKU: ..... DHG602DUC  
 Internal article number: ..... 000000000000717973  
 EAN code: ..... 4242002916026  
 Product Packaging Dimensions (HxWxD): ...8 11/16" x 16 9/16" x 17 5/16"  
 Net Weight: ..... 19.000 lbs  
 Gross Weight: ..... 22.000 lbs  
 Quantity per packing unit:  
 Standard number of units per pallet: ..... 30  
 UPC code: ..... 825225921219



## **800 Series, Integral blower DHG602DUC**

**600 CFM Flexible Blower Can Mount To  
Downdraft Or Be Used As An Inline  
Blower, And Can Be Rotated To Exhaust  
Downward Or To Sides**

---

### **Design**

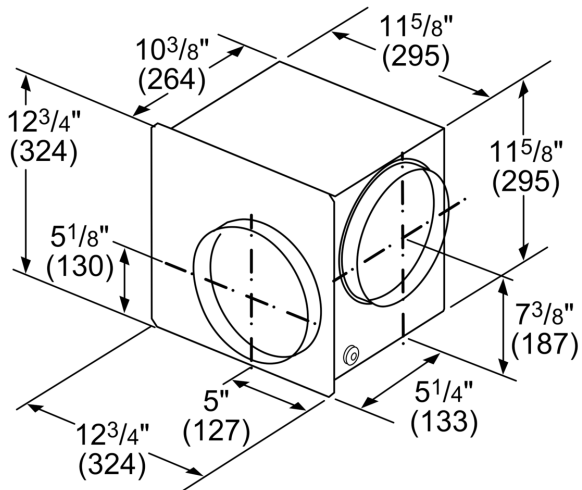
- 600 CFM Flexible Blower Has 8" Round Duct Exhaust
- Some Blower Positions May Need Deeper Cabinets. See Installation Guide
- Additional Accessories May Be Required For Installation, See Manual

### **Performance**

- Capable Up To 600 CFM In Performance

## 800 Series, Integral blower DHG602DUC

---



measurements in inches and (mm)