



Instant Warm Handwash System

Service Manual



Table of Contents

1. PRODUCT OVERVIEW	3
a. Product Features & Specifications	3
b. Electrical Specifications.....	3
c. How the System Works	3
d. System Components	4
e. Specification Plates.....	5
2. PREVENTIVE MAINTENANCE	5
a. T&P Valve.....	6
3. SERVICE INSTRUCTIONS	6
a. Faucet Endpiece.....	7
b. Faucet Assembly	7
c. Sensor Assembly	10
d. T&P Valve.....	12
e. Tank Assembly	13
4. TROUBLESHOOTING GUIDE.....	15
5. LIMITED WARRANTY.....	16

1. PRODUCT OVERVIEW

The InSinkEerator Instant Warm Handwash System provides commercial kitchens with a sanitary, touchless handwashing solution that promotes hygiene by providing instant warm water in locations where employees need to wash their hands consistently and effectively.

The Instant Warm Handwash System is a UL/cUL® listed product that provides at least 40 twenty-second, instantly warm handwashes at 100°F (38°C) per hour (based on cycles of 20 seconds on/40 seconds off, incoming water temperature of 40°F, and a tank set point of 105°F), with a touchless faucet.

a. Product Features & Specifications

- Adjustable temperature range of 80° to 120°F
- 0.5 gallon (1.89L) per minute flow rate
- 2/3 gallon (2.5L) stainless steel construction tank
- Chrome plated faucet with touch-free activation
- Faucet can be splash or deck mounted to a 1, 2, or 3-hole sink with 4" centers
- Requires only cold water supply line; Easily connected to a standard 3/8" compression fitting
- Recommended incoming water temperature and pressure: 40-80°F at 30-70PSI. (For higher pressures, a regulator is required.)
- Patent pending

b. Electrical Specifications

WASH-2 – 115VAC, 1300 Watts, 11.3 amps, cULus

c. How the System Works

Cold water enters the tank enclosure through the braided hose. The cold water travels through the mixing valve into the tank where it is heated to approximately 145°F. The heater and tank temperature is controlled by the circuit board. Once motion is detected by the faucet sensor, the solenoid valve will open, mixing the water from the tank with additional cold water to deliver 100°F water to the faucet. The T&P valve will open if the temperature or pressure inside the tank reaches 210°F or 150 psi, respectively.

d. System Components



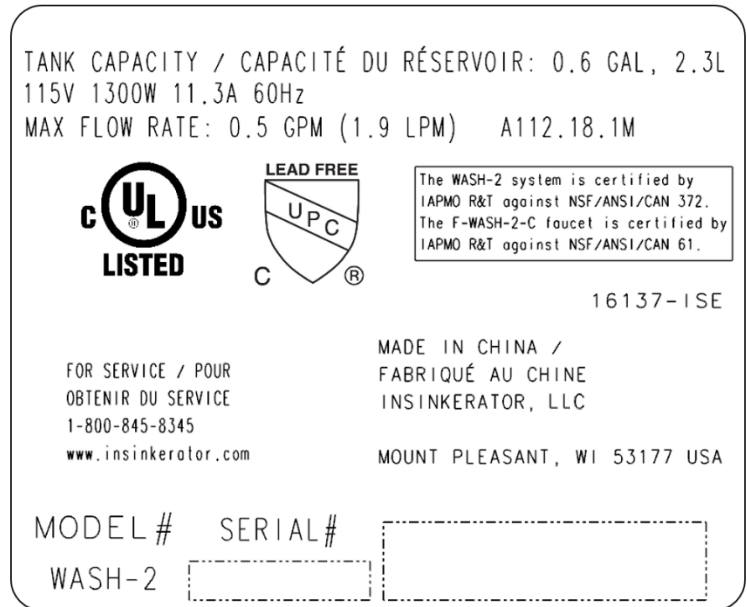
Instant Warm Handwash – Service Parts List

Item	Part No.	Description
a	16076-ISE	ENDPIECE, 0.5 GPM
b	16158-ISE	FAUCET ASSY, F-WASH-2 -C
c	16163-ISE	SENSOR ASSY, F-WASH-2 -C
d	16083-ISE	VALVE, T&P 150PSI/210F
e	16157-ISE	TANK ASSY, WASH-2

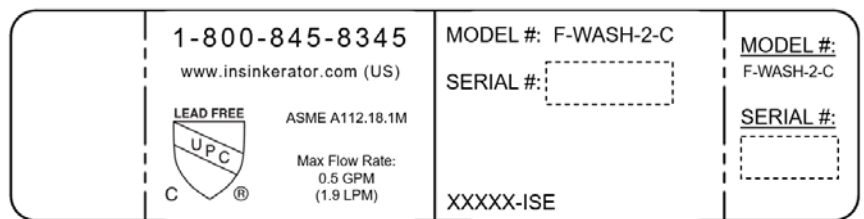
e. Specification Plates

The InSinkEerator Instant Warm Handwash consists of two items with unique specification decals which indicates the following product information:

- Model Number
- Serial Number
- Flow Rate
- Agency Approvals



System Spec Plate – Found on the right side of the Tank Enclosure.



Faucet Spec Plate – Found on the water hose connected to the Tank.

2. PREVENTIVE MAINTENANCE

Regularly inspect the unit for any signs of leakage. If there are signs of water damage, immediately remove the unit from service.

The Preventive Maintenance plan consists of annual inspections of the following system components.

a. T&P Valve

The T&P valve lever **MUST** be operated **AT LEAST ONCE A YEAR** to ensure that the water-ways are clear. Certain naturally occurring mineral deposits may adhere to the valve, rendering it inoperative.

When manually operating the lever, water will discharge, and precautions must be taken to avoid contact with hot water and to avoid water damage. **BEFORE** operating lever, check to see that a discharge line is connected to this valve directing the flow of hot water from the valve to a proper place of disposal, otherwise personal injury may result.

If no water flows, valve is inoperative. **TURN OFF THE WATER HEATER AND CALL THE FOODSERVICE CONSUMER SUPPORT AT 800-845-8345.**



3. SERVICE INSTRUCTIONS

Prior to Service Call

- Obtain model number and serial number from the unit to prepare for the service call.
- Confirm date of system installation and/or initial startup.
- Obtain the service history of the system if any exists.

a. Faucet Endpiece

Unscrew the end piece from your faucet, keeping the parts in the order in which they were removed. Then flush the parts with water and reinstall. If the end piece needs to be replaced, only use an InSinkEerator replacement.



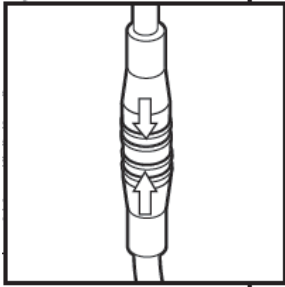
b. Faucet Assembly

Removing the Faucet Assembly

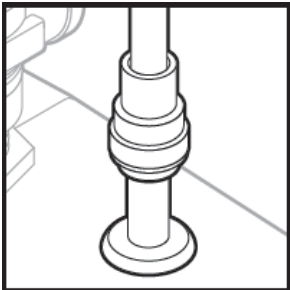
1. Disconnect power from the unit.
2. Shut off the cold water feed to the Handwash Tank.
3. From underneath or behind the sink, loosen the nut(s) using an adjustable wrench.



4. Unplug the sensor cable from the top of the tank.



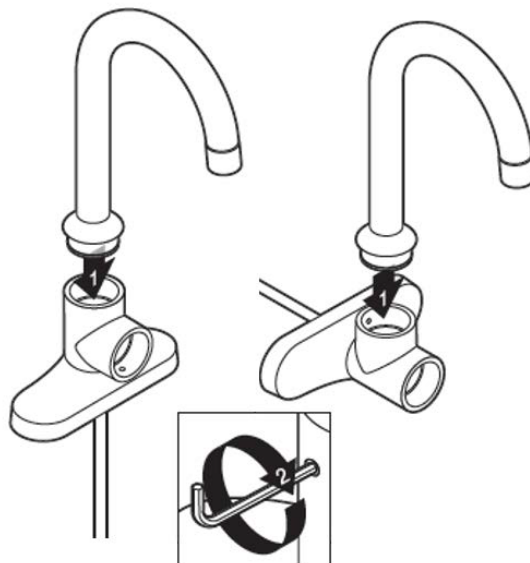
5. Unplug the water outlet tube from the top of the tank.



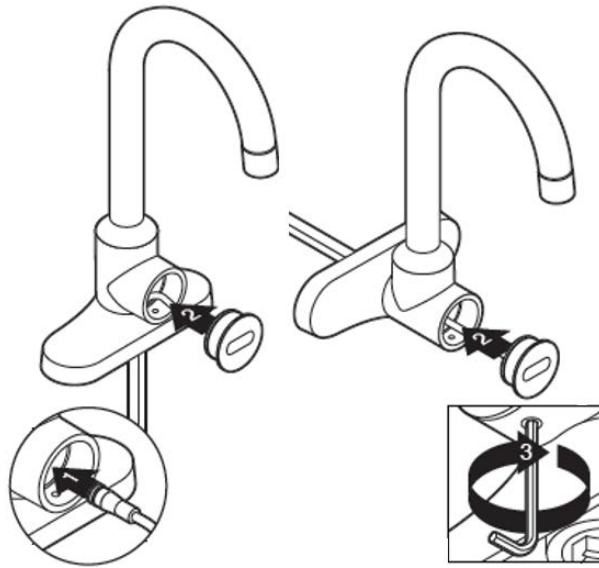
6. Remove the Faucet from the sink.

Installing the Faucet Assembly

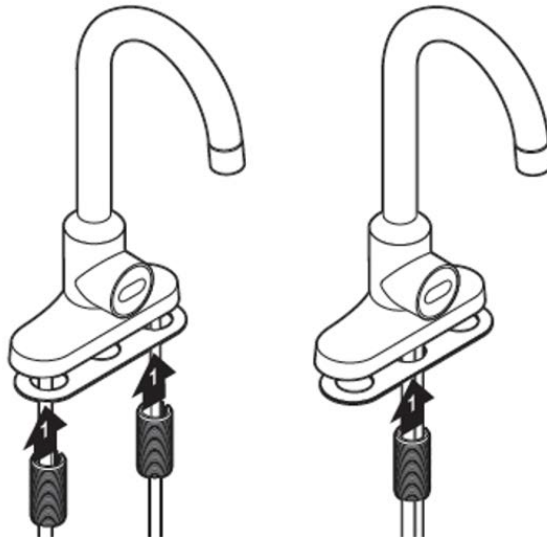
1. Install the spout into the faucet base and tighten the set screw to secure.



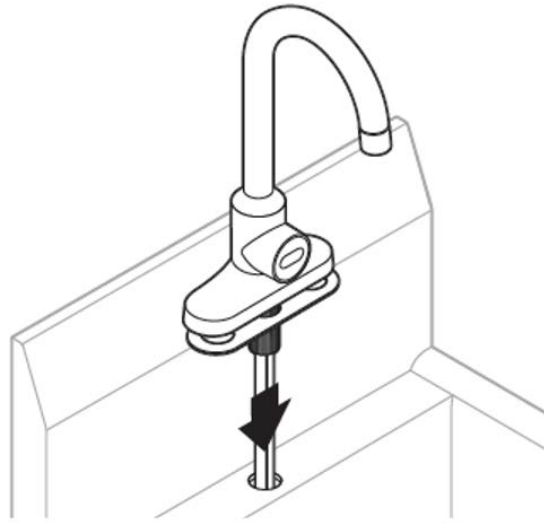
2. After inserting the sensor connection wire, install the sensor into the faucet base, and tighten the set screw to secure.



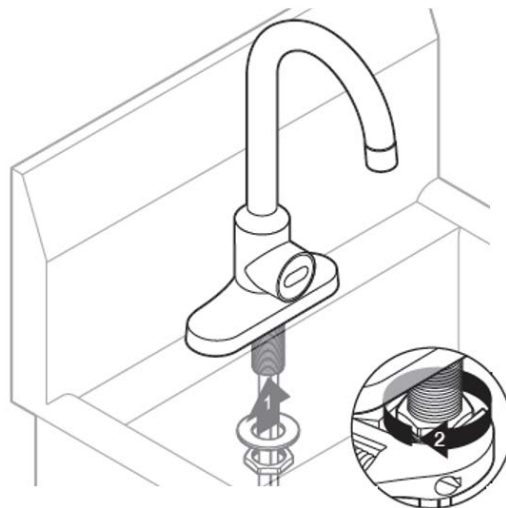
3. Install the threaded sleeves into the faucet base and tighten.



4. Feed the hose, sensor wire, and threaded sleeves into the sink holes, until the faucet rests on the deck/splash.



5. Install the washers and large nuts onto the threaded sleeves. Use an adjustable wrench to secure.



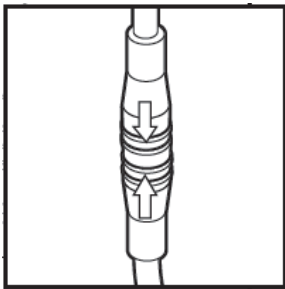
c. Sensor Assembly

1. Disconnect power from the unit.

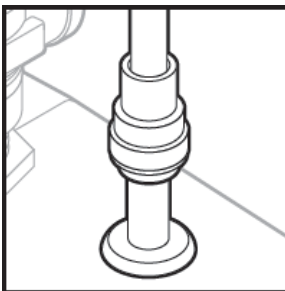
2. Shut off the cold water feed to the Handwash Tank.
3. From underneath or behind the sink, loosen the nut(s) using an adjustable wrench.



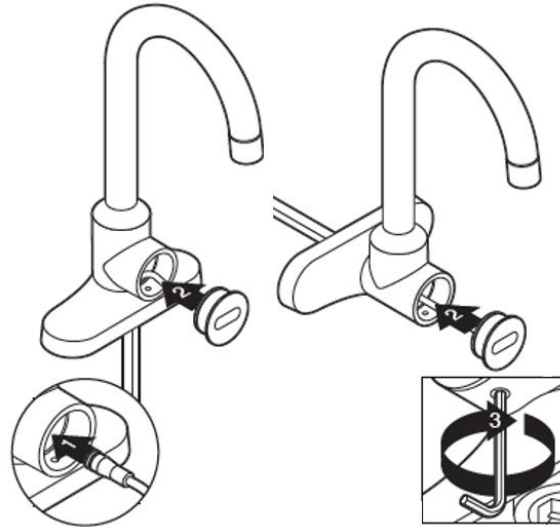
4. Unplug the sensor cable from the top of the tank.



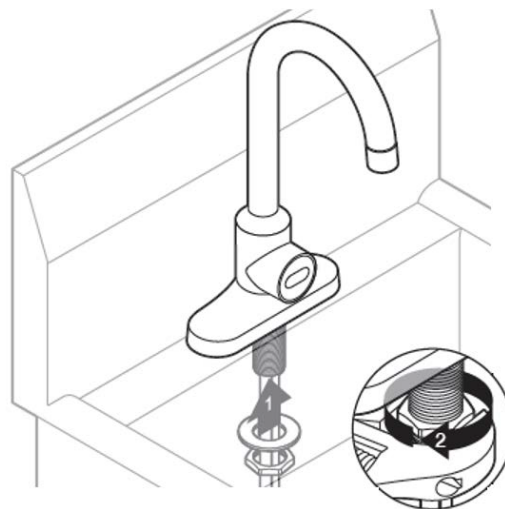
5. Unplug the water outlet tube from the top of the tank.



6. Remove the Faucet from the sink.
7. Loosen the set screw that holds the sensor to the faucet base.
8. Insert the new sensor connection wire, install the sensor into the faucet base, and tighten the set screw to secure.



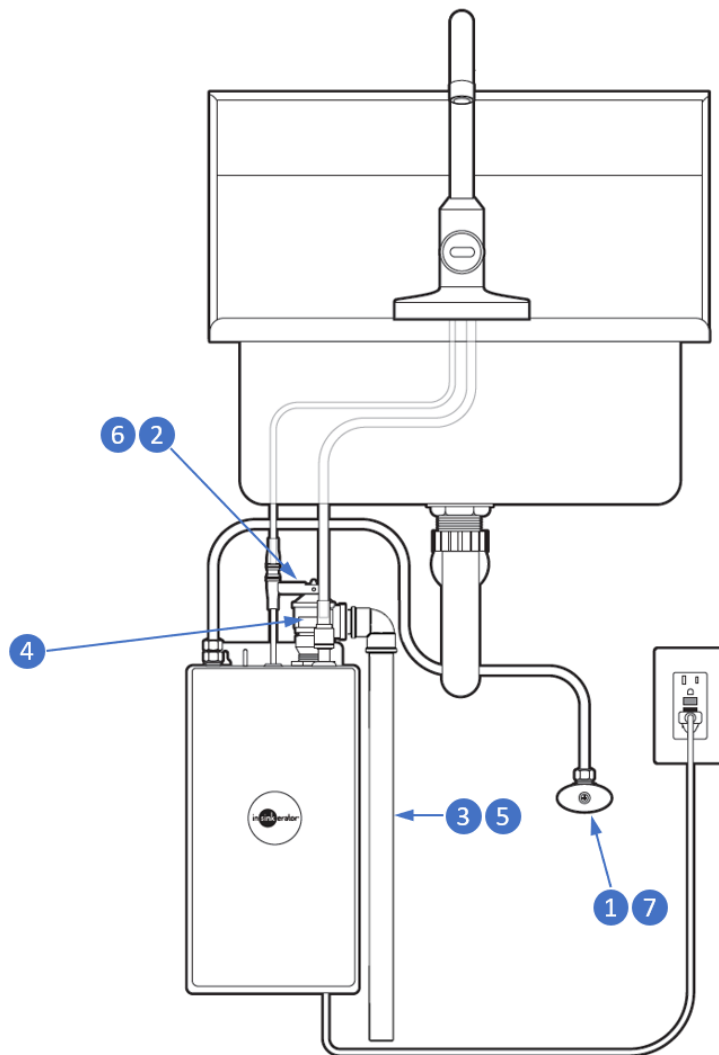
9. Re-attached the faucet to the sink and install the washers and large nuts onto the threaded sleeves. Use an adjustable wrench to secure.



d. T&P Valve

10. Disconnect power from the unit.
11. Shut off the cold water feed to the Handwash Tank.
12. Raise the T&P valve lever to release any excess pressure.
13. Remove the discharge pipe that is attached to the T&P.
14. Unscrew the old T&P valve from the Tank Enclosure. Apply Teflon pipe-thread tape onto the threads of the new T&P valve, winding counterclockwise. Screw the new T&P valve into the Tank Enclosure.

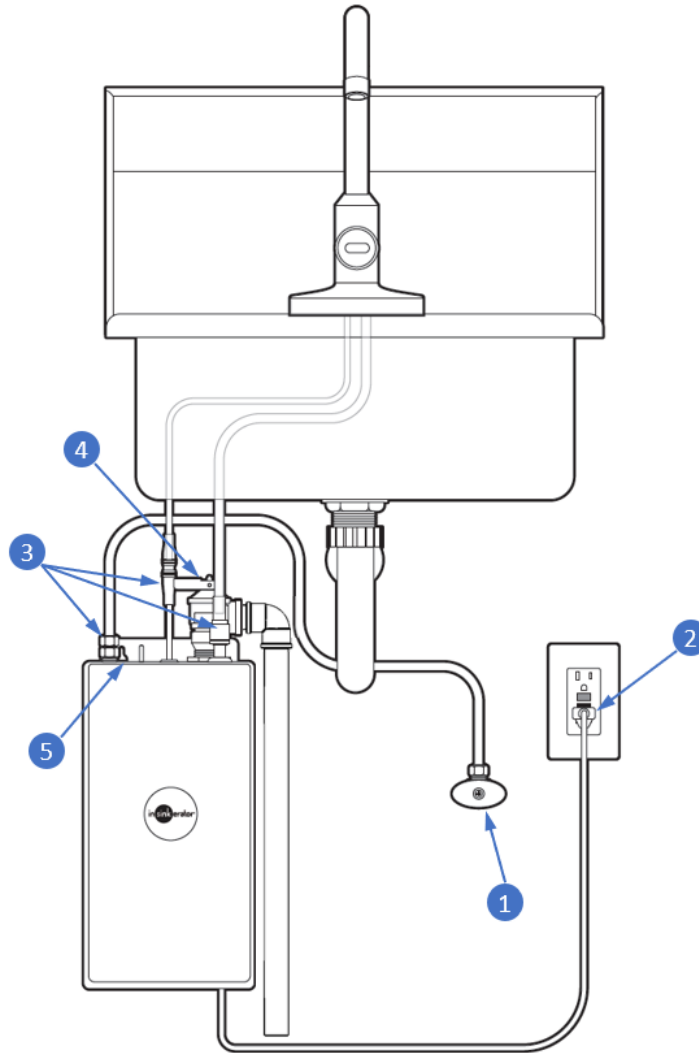
15. Re-attached the discharge pipe to the T&P.
16. Ensure that the T&P valve lever is closed.
17. Turn on the cold water feed to the Handwash Tank.



e. Tank Assembly

1. Disconnect power from the unit.
2. Shut off the cold water feed to the Handwash Tank.
3. Disconnect the cold water line, sensor cable, and water outlet tube.
4. Raise the T&P valve lever to release any excess pressure.
5. Unhook the tank from the wall

Place the new Tank Assembly onto the mounting screws and reconnect the cold water line, sensor cable, and water outlet tube. Once complete, plug the Tank Assembly into the power outlet. Activate the faucet immediately to allow the tank to fill for 2 minutes.



4. TROUBLESHOOTING GUIDE

PROBLEM	POSSIBLE CAUSE	SOLUTION
Water or steam spits from the T&P valve.	<ul style="list-style-type: none"> • Water pressure inside of tank is too high. • Temperature inside of tank is too high. • T&P valve is faulty. • Tank is defective. 	<ul style="list-style-type: none"> • Reduce incoming water pressure by adding a pressure reducer. • Unplug unit, discontinue use and contact an authorized InSinkErator service agent. • Replace T&P valve. • Replace Tank.
No warm water.	<ul style="list-style-type: none"> • The unit is unplugged. • The electric outlet is inoperative. • System is in start-up mode. • Tank is defective. 	<ul style="list-style-type: none"> • Make sure the unit is connected to a GFCI outlet. • Make sure the circuit breaker or fuses are functioning properly. • Check that the outlet is not switched off. • Allow system to heat water (there is a 5 minute startup delay before the heater will turn on. The heater will run through the startup process and will take approximately 10 additional minutes for the water to reach temperature). • Replace Tank.
Water is too hot or not warm enough.	<ul style="list-style-type: none"> • TMV is not adjusted to your needs. 	<ul style="list-style-type: none"> • Adjust TMV and re-measure output water temperature as described in the Adjusting the Thermostat section on page 12 of this manual.
Undesired output stream.	<ul style="list-style-type: none"> • Debris in the end piece. 	<ul style="list-style-type: none"> • Unscrew spout end piece and clean out any debris. • Replace End Piece.
Water is continuously dripping from the spout.	<ul style="list-style-type: none"> • Debris build up on internal components. 	<ul style="list-style-type: none"> • Replace Tank
Water discoloration/rusty appearance.	<ul style="list-style-type: none"> • Corrosion of unit. 	<ul style="list-style-type: none"> • Replace Tank
Motion doesn't activate water.	<ul style="list-style-type: none"> • Sensor lens is dirty. • Unit is not plugged in. • Faucet sensor cable is not plugged in. • Sensor range. 	<ul style="list-style-type: none"> • Clean sensor lens. • Make sure the unit is connected. • Make sure the circuit breaker or fuses are functioning properly. • Check that the outlet is not switched off. • Disconnect, inspect, and reconnect sensor cable located on top of tank. • Perform sensor calibration steps as described in the Sensor Calibration section on page 13 of this manual. • Replace Sensor.

5. LIMITED WARRANTY

InSinkErator® (“InSinkErator” or “Manufacturer” or “we” or “our” or “us”) warrants to the original purchaser only (“Customer” or “you” or “your”), subject to the exclusions below, that your InSinkErator® (the “InSinkErator Product”) will be free from defects in material and workmanship for one year from the original date of purchase (the “Warranty Period”). This limited warranty terminates if the original purchaser transfers the InSinkErator Product to any other person or entity.

What is Covered

This limited warranty includes repair or replacement of your InSinkErator Product, accessories if included in the original InSinkErator Product package, and all replacement parts and labor costs if provided by an authorized InSinkErator service representative.

What is not Covered

This limited warranty does not extend to and expressly excludes:

- Losses or damages or the inability to operate your InSinkErator Product resulting from conditions beyond the Manufacturer’s control including, without limitation, accident, alteration, misuse, abuse, neglect, or negligence (other than Manufacturer’s).
- Wear and tear expected to occur during the normal course of use, including without limitation, cosmetic rust, scratches, dents or comparable and reasonably expected losses or damages.
- Failure to install, maintain, assemble, or mount the InSinkErator Product in accordance with Manufacturer’s instructions or local electrical and plumbing codes, faulty or improper electrical installation, faulty or improper plumbing installation, clogged drain lines, or an improperly sized unit (as specified by InSinkErator).

What we will do to Correct Problems

To file a warranty claim during the Warranty Period, you may call Toll Free 1-800-845-8345 for the nearest InSinkErator Authorized Service Agency or to reach Technical Support, or you may visit our website at www.insinkerator.com.

The following information must be provided as part of your warranty claim: your name, address, phone number, your InSinkErator Product model and serial number. You will be required to submit supporting documentation of the date of purchase.

Manufacturer or its authorized service representative will determine, in its sole and absolute discretion, if your InSinkErator Product is covered under this limited warranty. Only an authorized InSinkErator service representative may provide warranty service. InSinkErator is not responsible for warranty claims arising from work performed on your InSinkErator Product by anyone other than an authorized InSinkErator service representative.

If a covered claim is made during the Warranty Period, Manufacturer will, through its authorized service representative, and at Manufacturer’s or its authorized service representative’s sole discretion, either repair or replace your InSinkErator Product. If your InSinkErator Product is replaced, the warranty on the replacement InSinkErator Product will be limited to the unexpired term remaining in the original Warranty Period. **YOUR SOLE AND EXCLUSIVE REMEDY UNDER THIS LIMITED WARRANTY SHALL BE LIMITED TO REPAIR OR REPLACEMENT OF THE INSINKERATOR PRODUCT.**

No Other Express Warranty Applies

THE LIMITED WARRANTIES PROVIDED ABOVE ARE THE SOLE AND EXCLUSIVE WARRANTIES PROVIDED BY MANUFACTURER TO THE ORIGINAL PURCHASER, AND ARE IN LIEU OF ALL OTHER WARRANTIES, WRITTEN OR ORAL, EXPRESS OR IMPLIED, WHETHER ARISING BY OPERATION OF LAW OR OTHERWISE, INCLUDING, WITHOUT LIMITATION, WARRANTIES OF MERCHANTABILITY OR FITNESS FOR A PARTICULAR PURPOSE, WHETHER OR NOT THE PURPOSE HAS BEEN DISCLOSED AND WHETHER OR NOT THE INSINKERATOR PRODUCT HAS BEEN SPECIFICALLY DESIGNED OR MANUFACTURED FOR YOUR USE OR PURPOSE.

Limitation of Liability

TO THE EXTENT PERMITTED BY LAW, IN NO EVENT SHALL MANUFACTURER OR ITS AUTHORIZED SERVICE REPRESENTATIVES BE LIABLE FOR ANY INCIDENTAL, SPECIAL, INDIRECT, OR CONSEQUENTIAL DAMAGES, INCLUDING ANY ECONOMIC LOSS, WHETHER RESULTING FROM NONPERFORMANCE, USE, MISUSE OR INABILITY TO USE THE INSINKERATOR PRODUCT OR THE MANUFACTURER’S OR ITS AUTHORIZED SERVICE REPRESENTATIVE’S NEGLIGENCE. MANUFACTURER SHALL NOT BE LIABLE FOR DAMAGES CAUSED BY DELAY IN PERFORMANCE AND IN NO EVENT, REGARDLESS OF THE FORM OF THE CLAIM OR CAUSE OF ACTION (WHETHER BASED IN CONTRACT, INFRINGEMENT, NEGLIGENCE, STRICT LIABILITY, OTHER TORT OR OTHERWISE), SHALL MANUFACTURER’S LIABILITY TO YOU EXCEED THE PRICE PAID BY THE ORIGINAL OWNER FOR THE INSINKERATOR PRODUCT.

The term “consequential damages” shall include, but not be limited to, loss of anticipated profits, business interruption, loss of use or revenue, cost of capital or loss or damage to property or equipment.

Some states do not allow the exclusion or limitation of incidental or consequential damages, so the above limitation may not apply to you. This warranty gives you specific legal rights — and you may also have other rights which vary from state to state.