

Refrigeration Equipment 1-Solid Door ADA Height Under Counter Refrigerator 24" Long

ITEM # _____

MODEL # _____

NAME # _____

SIS # _____

AIA # _____



738323 (KCHUC23R)

1-Solid Door ADA Height Under Counter Refrigerator 24" Long

Short Form Specification

Item No. _____

1-door ADA compliant undercounter refrigerator with exterior back panel and exterior bottom panel in galvanized steel, exterior side and top panel in 430 stainless steel; interior back, top and bottom panels in high impact white polystyrene. Fin & tube condenser to improve the performances in high temperature environments. Automatic Defrost Cooling System and temperature control. Vinyl heavy duty adjustable, easy to handle and clean shelves. External temperature display.

R600a gas in refrigeration circuit.
ETL Safety and Sanitation certified.
3/5 Years warranty.

Main Features

- ADA Height Compliant
- External temperature display.
- Removable gasket for easy cleaning operations.
- Fin & Tube Condenser improves performance in high temperature environments.
- Automatic Defrost Cooling System provides worry-free performance.
- Electronic Temperature Control, quick and simple to set, with control display for easy monitoring.
- Cabinet completely insulated with high density polyurethane for low environmental impact.
- Heavy duty Vinyl coated steel shelves.
- Adjustable shelves for flexible storage

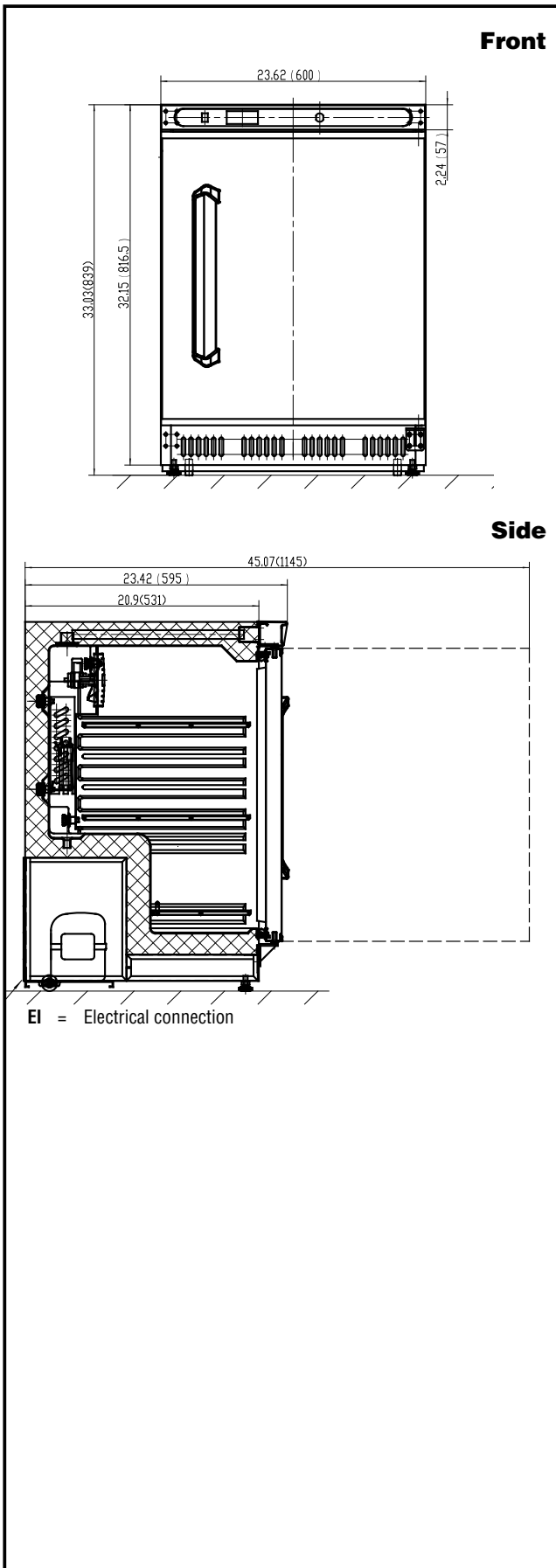
Construction

- Lockable door.
- Magnetic gasket removable without tools for easy cleaning.
- Pre-wired heavy duty power cord.
- Heavy duty door hinges.
- Adjustable leveling feet.
- Smooth rolling wheels, for effortless mobility
- Stainless steel worktop, durable functionality
- White polystyrene interior, for high impact resistance

Sustainability

- CFC and HCFC free (ecological refrigerant type: R600a).
- High efficiency components to minimize the energy consumption still guaranteeing the highest performances.

APPROVAL: _____



Electric

Supply voltage:	115 V/1 ph/60 Hz
Electrical power, max:	0.24 kW
Plug type:	NEMA 5-15

Capacity:

Gross capacity:	4.4 cu.feet
-----------------	-------------

Key Information:

Warranty:	3 / 5 years
Door hinges:	Right Side
External dimensions, Width:	23 5/8" (600 mm)
External dimensions, Depth:	23 7/16" (595 mm)
External dimensions, Height:	33 1/32" (839 mm)
Internal Dimensions (depth):	15 15/16" / (405 mm)
Internal Dimensions (height):	24 5/8" / (625 mm)
Internal Dimensions (width):	19 5/16" / (491 mm)
Shipping height:	41 5/16" (1050 mm)
Shipping weight:	99 lbs (45 kg)
Shipping volume:	16.39 ft ³ (0.46 m ³)
Type of external material:	Stainless Steel
Type of internal material:	High Impact White Polystyrene
Approvals	ETL C&US;ETL SANITATION

Refrigeration Data

Condenser type:	Fin & tube
Operating temperature min.:	32 °F
Compressor power:	1/12 hp
Operating temperature max.:	41 °F
Defrost type:	Automatic

Sustainability

Current consumption:	2 Amps
Refrigerant type:	R600a
GWP Index:	3
Refrigerant weight:	64 g



Refrigeration Equipment 1-Solid Door ADA Height Under Counter Refrigerator 24" Long

The company reserves the right to make modifications to the products without prior notice. All information correct at time of printing.