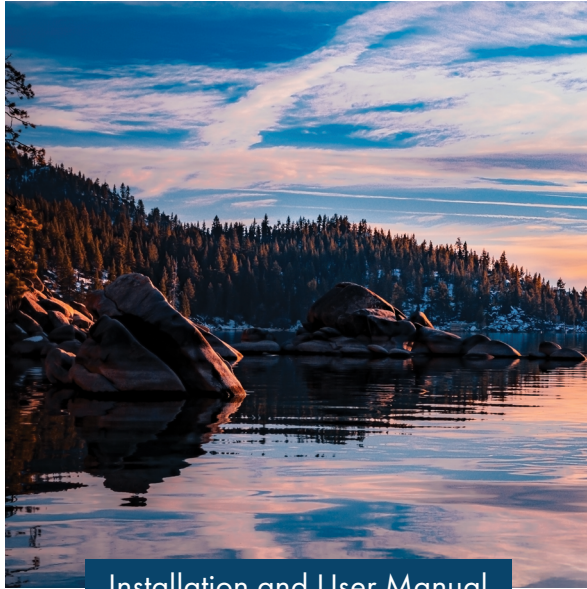


ZLINE

ATTAINABLE LUXURY[®]



Installation and User Manual

PALISADES BATH ACCESSORIES RBCN1-HK, RBCN1-TP, RBCN1-TRNG, RBCN1-TR, & RBCN1-TR18 MODELS

zlinekitchen.com



ZLINE Kitchen and Bath provides Attainable Luxury, where the kitchen and bath of your dreams is never out of reach. Through our unique designs and unparalleled quality, we're dedicated to providing you an elevated experience in the heart of your home. With an endless selection of features and finishes, our inspiration is your reality.

ZLINE
ATTAINABLE LUXURY®



ZLINE is fueled by a passion for innovation; A relentless pursuit of bringing the highest end luxury designs and professional features into everyone's homes.

Because we continually strive to improve our products, we may change specifications and designs without prior notice.

Scan the QR code to view the most up-to-date version of the **Installation Manual and User Manual**.

⚠ WARNING: This product can expose you to chemicals including nickel, which is known to the State of California to cause cancer. For more information, go to www.P65Warnings.ca.gov.

TABLE OF CONTENTS

- BEFORE INSTALLATION..... 1
 - Parts Included 1
 - Tools Needed 1
 - RBCN1-HK. 2
 - RBCN1-TP 3
 - RBCN1-TRNG 4
 - RBCN1-TR & RBCN1-TR18 5

- INSTALLATION 6
 - RBCN1-HK, RBCN1-TP, & RBCN1-TRNG 6
 - RBCN1-TR & RBCN1-TR18 7

- CARE AND MAINTENANCE..... 8

- WARRANTY..... 9

BEFORE INSTALLATION

PARTS INCLUDED

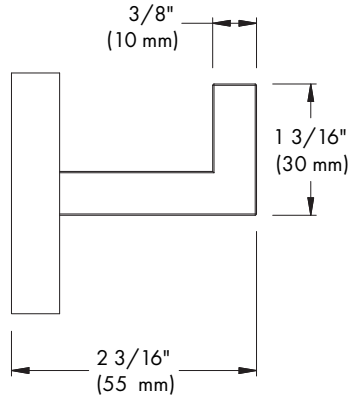
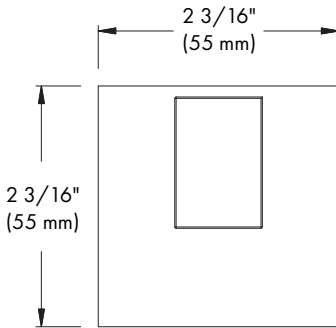
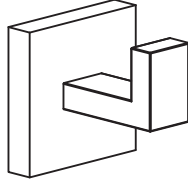
- Allen wrench
- Anchors
- Screws

TOOLS NEEDED

- Drill with 1/4" (6 mm) drill bit
- Flat head screwdriver
- Hammer
- Level
- Phillips head screwdriver
- Tape measure

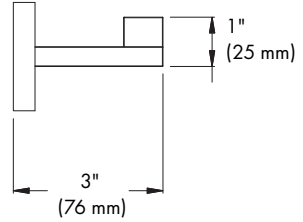
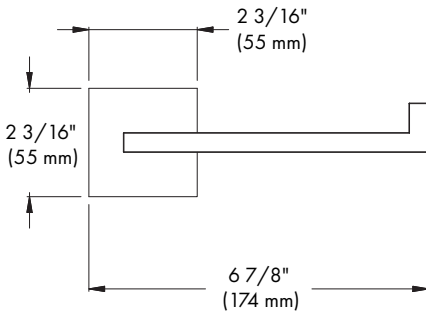
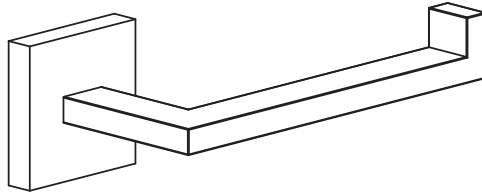
BEFORE INSTALLATION

RBCN1-HK



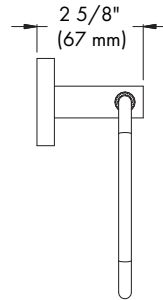
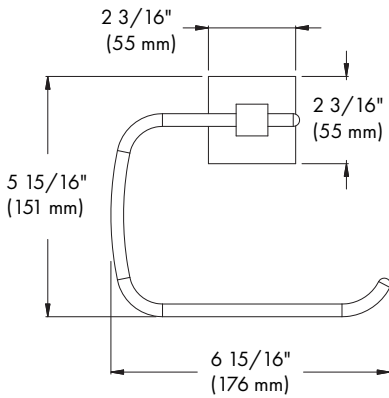
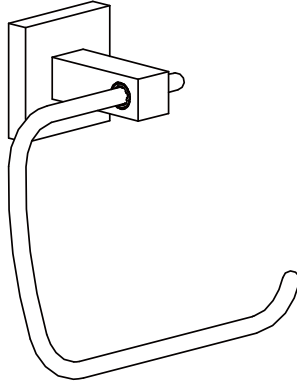
BEFORE INSTALLATION

RBCN1-TP



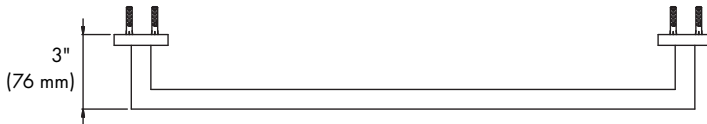
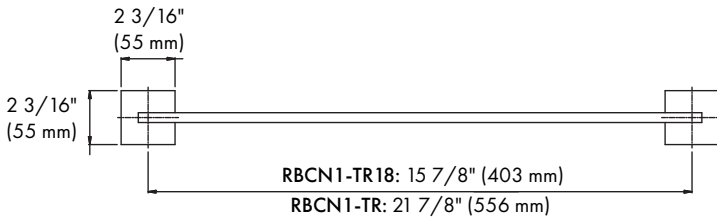
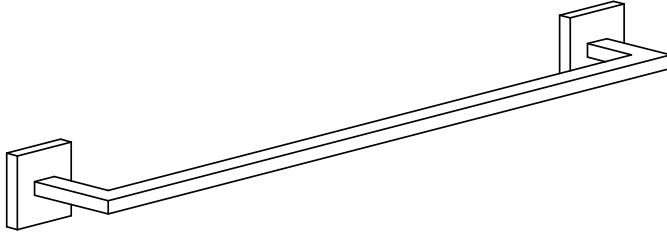
BEFORE INSTALLATION

RBCN1-TRNG



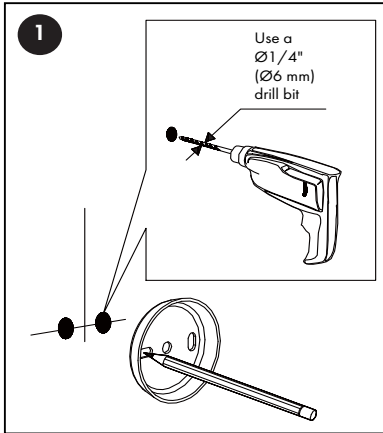
BEFORE INSTALLATION

RBCN1-TR & RBCN1-TR18

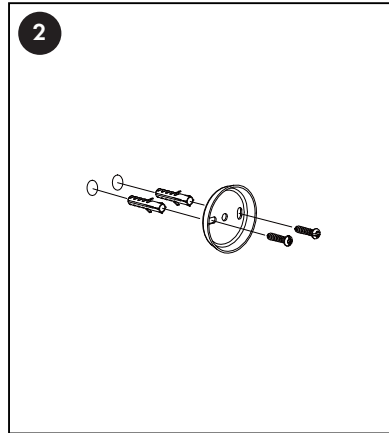


INSTALLATION

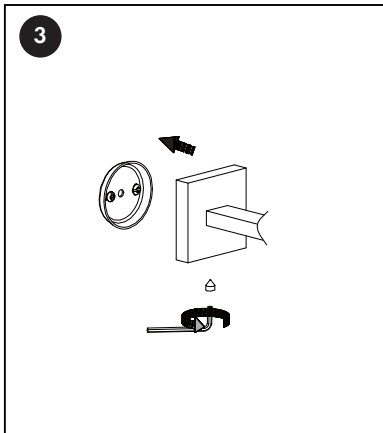
RBCN1-HK, RBCN1-TP, & RBCN1-TRNG



Mark the area where the item will be installed. Use a level to make sure that the mounting hardware is level. Drill $\text{Ø}1/4''$ ($\text{Ø}6$ mm) holes for the mounting hardware.



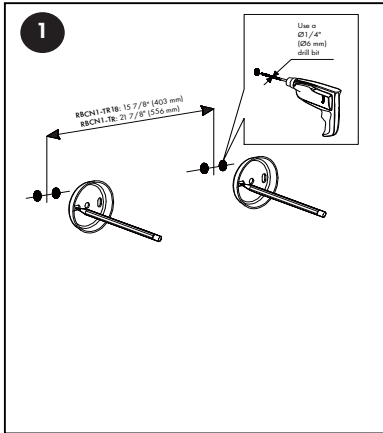
Place the anchors in the drilled holes using a hammer to gently tap them into place. Place the screws through the mounting plate and thread them into the anchors.



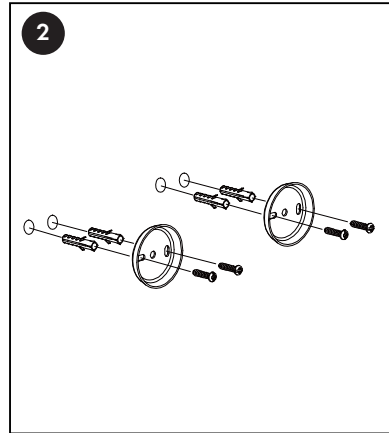
Place the item onto the mounting plate and use an Allen wrench to tighten the set screw, securing the item to the mounting plate. Ensure that the item is not upside down.

INSTALLATION

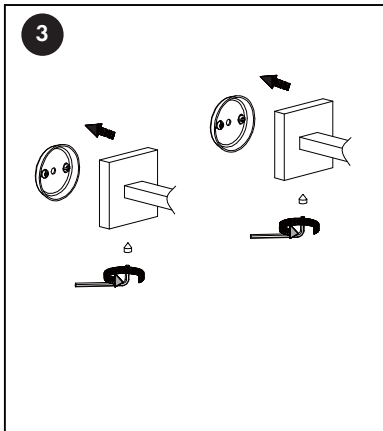
RBCN1-TR & RBCN1-TR18



Use a measuring tape and pencil to mark the area where the item will be installed. Ensure the markings are level.



Place the anchors in the drilled holes using a hammer to gently tap them into place. Place the screws through the mounting plate and thread them into the anchors.



Place the item onto the mounting plate and use an Allen wrench to tighten the set screw, securing the item to the mounting plate. Ensure that the item is not upside down.

CARE AND MAINTENANCE

To keep the product clean, follow the steps below:

- Remove any surface dirt and film using clean water and cotton cloth.
- Spray cleaner such as mild liquid detergents, clear liquid glass cleaners, non-acidic and fully dissolved powder cleaners, or non-abrasive liquid polishers onto a microfiber cloth to clean the product.
- Do not clean with soaps, acid, polish, abrasives, or harsh cleaners.
- Rinse the product with clean water to thoroughly remove cleaner and dry with a microfiber cloth.

WARRANTY

COVERAGE

ZLINE Kitchen and Bath (“ZLINE”) plumbing products have a limited lifetime warranty from the original purchase date for the original purchaser of the product.

ZLINE warranty periods begin from the original date of product delivery and solely cover the original purchaser of the product, delivered new and in its original carton. ZLINE will provide free-of-charge, non-consumable replacement parts for the components that failed due to manufacturing defects. It is the responsibility of the customer to install all replacement parts, as ZLINE does not perform service repairs on its plumbing products.

ZLINE’s liability is limited to the original purchase price of the product. Additional injuries, losses, damages, or other inconveniences caused by product malfunction or defects in materials are not covered under the terms of this warranty.

TERMS

ZLINE warranties apply only to the original purchaser of a ZLINE product installed for normal residential use. This is defined as a single-family, residential dwelling in a non-commercial setting. Any warranty claim stemming from installation, operation, or any other use within a commercial setting is not covered under this limited warranty.

Commercial settings include, but are not limited to: schools, churches, hotels, restaurants, vacation rentals such as Airbnb, daycare centers, private clubs, fire stations, common areas in multi-family dwellings, nursing homes, food service locations, and institutional food service locations such as hospitals or correctional facilities.

This warranty is non-transferable and will not under any circumstance be extended based on the date of installation — the warranty period takes effect from the date of delivery and only covers the original purchaser. The warranty applies only to products installed in the contiguous United States and the District of Columbia.

WARRANTY

Out-of-pocket payments will not be reimbursed for replacement parts unless prior approval is received from ZLINE. Unapproved out-of-pocket payments for parts will not be reimbursed. Out-of-pocket payments for any type of service will not be reimbursed, as ZLINE does not perform service repairs on its plumbing products. All warranty procedures must be followed to maintain warranty coverage.

If ZLINE is unable to replace the defective part after a reasonable number of attempts, ZLINE reserves the right to offer to replace the product or provide the original purchaser a full refund of the purchase price of the product (not including installation, removal, or other charges that were not included in the original purchase price).

The original purchaser of the product must provide the original proof of purchase, including the purchase date, when filing a claim to obtain replacement parts or refunds. Additionally, the original purchaser of the product must provide the serial number of the product when filing a claim to obtain replacement parts or refunds.

This warranty shall not apply to any ZLINE product in which the original factory serial number has been removed, altered, or cannot be readily determined for any reason. Further, ZLINE is not responsible for damage resulting from, but not limited to: shipment, delivery, or improper installation; negligence or improper maintenance, misuse, or abuse of the product; unauthorized alteration, modification, or tampering with the product; accident, fire, floods, pest infestations, pandemics, natural disasters, or any other unpreventable or unexplained acts of nature, commonly referred to as "acts of God"; water leaks or water damages caused by improper water supply or water connections associated with installation or disassembly of the product; and service to correct installation not in accordance with the instructions contained in ZLINE's product manuals and/or with local government codes.

WARRANTY

Additionally, this plumbing warranty does not apply to aesthetic damage, scratches, or natural wear caused by normal use; second-hand, open box products, or products purchased from an unauthorized retailer; consumable parts including, but not limited to, rough-in valves, aerators, diverter handles, sprayers, spouts, hoses, and flange covers; and damages, problems, or any type of performance-related issues stemming from alteration or tampering with the product, including, but not limited to, painting stainless steel, black stainless, Satin Stainless Steel, or any other finishes or any portion of the product's interior or exterior.

Information contained within ZLINE's installation and user manuals, in addition to product information included on ZLINE's website and all related digital listings, do not cover every possible condition and situation that may occur during the installation or operation of ZLINE products.

ZLINE reserves the right to make changes at any time to its products when considered safe, necessary, and useful. Always check the ZLINE website for the most up-to-date version of its product manuals: www.zlinekitchen.com/pages/manuals.

Do not install or operate any ZLINE product if it has missing or broken parts or if it arrives damaged due to shipping. If ZLINE products arrive damaged, contact ZLINE Customer Experience at 1-614-777-5004 for help. Failure to report a damaged appliance prior to installation or operation may void the warranty. ZLINE does not perform service repairs on its plumbing products. ZLINE disclaims responsibility for damage or injury caused by improper installation or use of any of its products.

WARRANTY



For questions, please contact our Customer Service team at 1-614-777-5004 or visit www.zlinekitchen.com/contact to utilize our online Customer Experience Portal.



Scan the QR code to view the most up-to-date version of our Installation Manual and User Manual.



Need to purchase a part or accessory for your ZLINE product? Visit www.zlineparts.com, ZLINE's official parts distribution partner.

1.0.5

zlinekitchen.com

1-614-777-5004

contact@zlinekitchen.com

ZLINE
ATTAINABLE LUXURY®