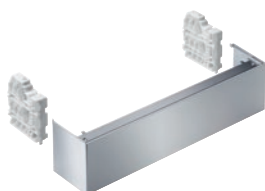


Stand 2
Plinth panel
for built-under appliances.



- Suitable for all PG 8055 – PG 8059 dishwashers
- Comprising plinth facing and two brackets
- Available in stainless steel and white
- Height 14, width 59.8, depth 12.7 in

EAN: 4002515213940 / Material number: 09456060 / Old Material Number: 67211605D

Product classification	
Fresh-water dishwashers	•
Machine/accessory categorization	
PG 8055 U	•
PG 8056 U	•
PG 8057 TD U	•
PG 8058 U	•
PG 8059 U	•
PG 8061 U	•
PFD 400 U	•
PFD 401 U	•
PFD 404 U	•
PFD 407 U	•
PFD 408 U	•
Product category	
Conversion kit	•
Installation materials	•
Product characteristics	
Material	Stainless steel
Color	Stainless Steel
Standard electrical connection	
Number of phases	0
Voltage in V	0
Frequency in Hz	0
Total rated load in kW	0.00
Fuse rating in A	0
Dimensions and weight	
External dimensions, net height in inches	140
External dimensions, net width in inches	588
External dimensions, net depth in inches	135.9
External dimensions, gross height in inches	5 15/16 (150)
External dimensions, gross width in inches	24 1/4 (615)
External dimensions, gross depth in inches	5 3/4 (145)
Net weight in lbs	3 (1.12)
Gross weight in lbs	4 (1.37)