

CBF559: 20 Tray Blast Chiller/Shock Freezer, Roll-in



CBF559

(Cabinet)



(Remote condenser unit)

Features and Specifications

Capacity: 1 full-sized speed rack (18" x 26" sheet pans) or 1 combi cart (70.055" H x 30.35" W x 35.15" D)
AISI 304 Stainless steel interior and exterior, ETL sanitation certified
Operating temperature range: -40°F to 50°F
Blast chilling yield (194°F to 37°F in 90 min): 440.93 lb Shock freezing yield (194°F to 0°F in 270 min): 385.81 lb
7" digital touch screen control with HACCP data tracker and alarms. Cycles include soft chill, hard chill, soft freeze, hard freeze, thawing, holding, and end of cycle hold mode.
Autodefrost
Multi-core probe with 4 reading points
Remote condensing unit included (assembly required). 33' run distance
Self-lubricating, sealed cast iron evaporator fan motor with high volume air flow design
Interior rounded corners, removable door gasket, and evaporator compartment for easy cleaning
Environmentally friendly R452A refrigerant: 212 oz (6.0 kg)
Self-closing door with 105° stop. Lock included.
Cabinet dimensions: 88 7/8" H x 59 1/16" W x 52 11/16" D
Remote condenser unit dimensions: 28"H x 56 1/8" W x 40 1/2" D
5 1/2" ramp included

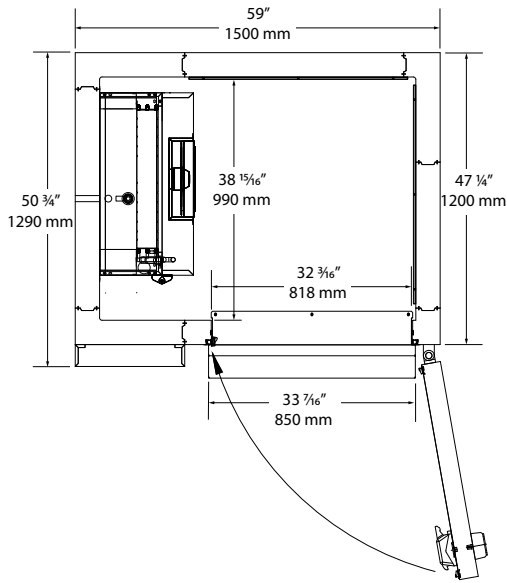
Model Details

Model	Description	Voltage/Hz/Phase/Amps	Shipping Weight
UCBF559-SS12A	20 Tray Blast Chiller/Shock Freezer, Roll-in (Cabinet)	230 / 60 / 1 / 4	1,565 lbs
	Remote Condenser	230 / 60 / 3 / 15	

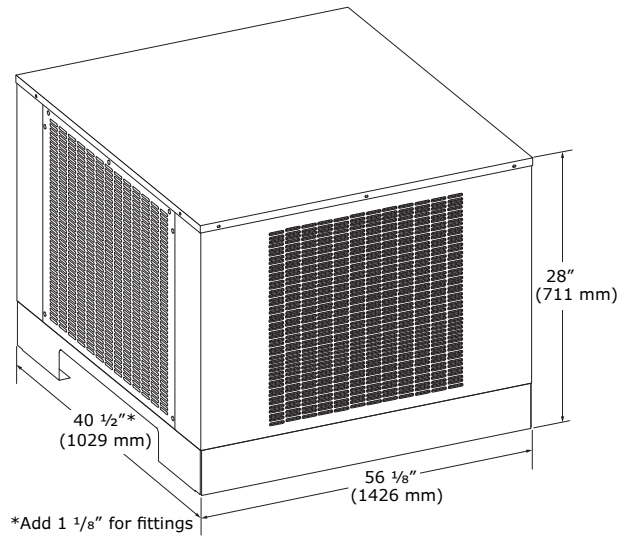


Product Specifications • Blast Chiller/Shock Freezer

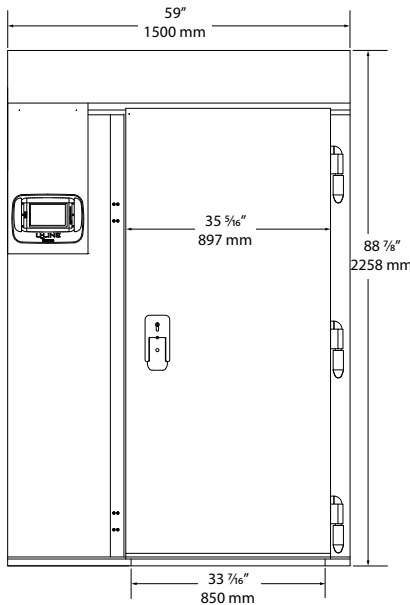
Top



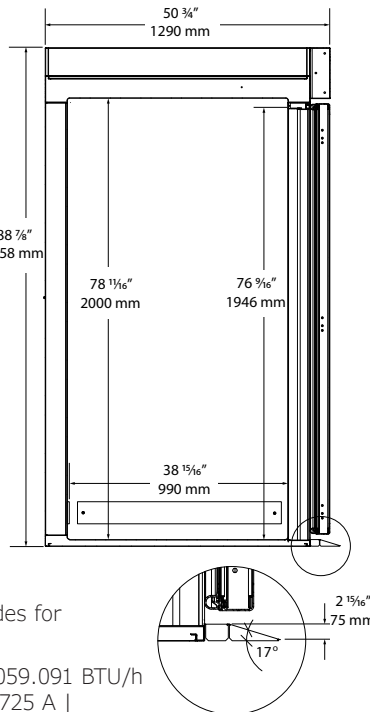
Remote Condensing Unit



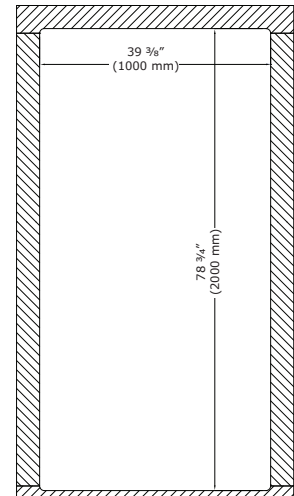
Front



Side



Interior



Note: Condensing unit requires clearance of 39 3/8" on all sides for proper ventilation.

Remote condenser unit: 72207.897 BTU/h chilling, 12059.091 BTU/h freezing / 7.5 HP RLA: 23.7 A | LRA: 107 A | MCA 34.725 A | MOP 58.425 A

Commercial Warranty

1 Year (parts & labor) / 5 year sealed system (parts)

See complete warranty for details

*All tests completed using 2" thick food products

