

ZLINE

ATTAINABLE LUXURY[®]



Installation and User Manual

KITCHEN FAUCETS

zlinekitchen.com



ZLINE Kitchen and Bath provides Attainable Luxury, where the kitchen and bath of your dreams is never out of reach. Through our unique designs and unparalleled quality, we're dedicated to providing you an elevated experience in the heart of your home. With an endless selection of features and finishes, our inspiration is your reality.

ZLINE
ATTAINABLE LUXURY®



ZLINE is fueled by a passion for innovation; A relentless pursuit of bringing the highest end luxury designs and professional features into everyone's homes.

Because we continually strive to improve our products, we may change specifications and designs without prior notice.

Scan the QR code to view the most up-to-date version of the Installation Manual and User Manual.

⚠ WARNING: This product can expose you to chemicals including nickel, which is known to the State of California to cause cancer. For more information, go to www.P65Warnings.ca.gov.

TABLE OF CONTENTS

IMPORTANT SAFETY INFORMATION.....	1
SPRING FAUCETS.....	3
PULL DOWN FAUCETS.....	6
DA VINCI PULL DOWN FAUCET.....	10
SINGLE HANDLE FAUCETS.....	13
DOUBLE HANDLE FAUCETS.....	17
CARE AND MAINTENANCE.....	21
TROUBLESHOOTING.....	22
WARRANTY.....	23

IMPORTANT SAFETY INFORMATION

PRIOR TO INSTALLATION

- Make sure that the cold and hot water lines are turned off.
- Wrap all threaded connections with plumber's tape. Always wrap in a clockwise direction.
- Cover your drain to avoid losing parts.
- Do not disassemble the main faucet body, as it has been installed and commissioned correctly and precisely before delivery to the factory.
- To keep the faucet from jamming, flush the water pipe before installation.

Operating conditions: Working pressure at 7.3 psi–145 psi (0.05 MPa–1.0 MPa) (including cold and hot water pressure) with applicable water temperature: 39.2 °F–194 °F (4 °C– 90 °C).

Water supply line length: 27 1/2" (699 mm)

Sprayer length: 46 1/2" (1181 mm)

INSTALLATION PREPARATION

1. Shut off the water and let the water in the current faucet drain.
 2. The tools needed for each installation are included at the beginning of each section.
 3. Loosen the hardware that keeps the current faucet in place. Remove faucet.
- If soldering the water connections when installing the faucet, remove the O-rings, cartridges, and washers before applying any heat.
 - Protect your eyes when cutting or soldering.
 - Do not over tighten screws/nuts. Finger tighten, then use a wrench/Philips head screwdriver to tighten the fixing screw/nut until snug.

IMPORTANT SAFETY INFORMATION

TOOLS NEEDED:

- Wrench
- Phillips head screwdriver
- Bucket

TIME REQUIRED: +/- 45 minutes

LEGEND:



Hot Water



Cold Water



Grease



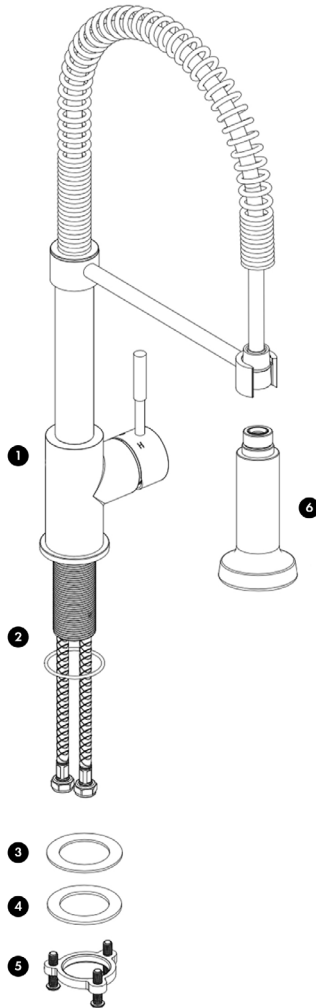
Warning



Plumber's tape

SPRING FAUCETS

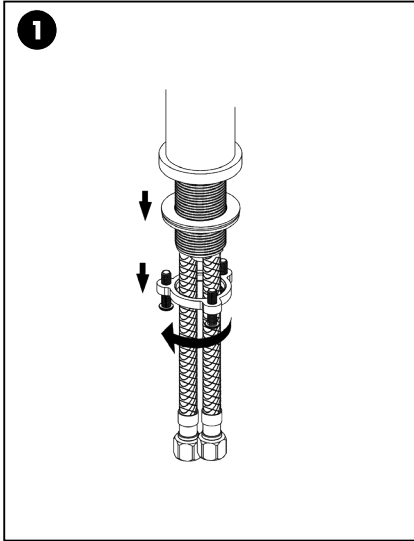
BEFORE INSTALLATION



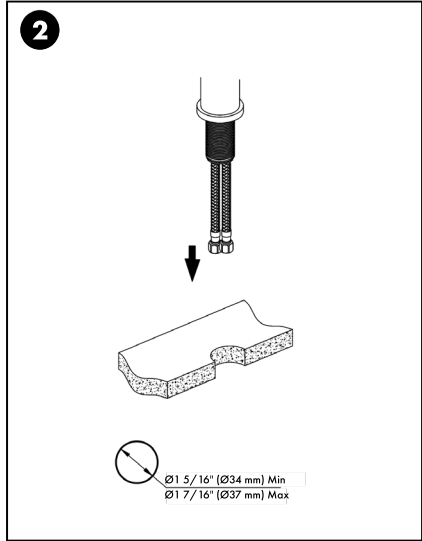
1. Faucet Body
2. Base O-Ring
3. Rubber Washer
4. Metal Washer
5. Fixing Nut and Screws
6. Spray Head

SPRING FAUCETS

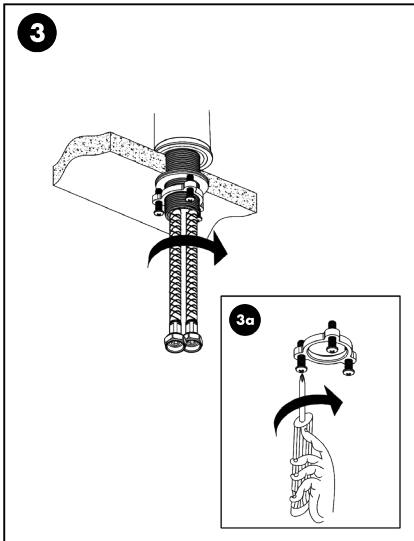
INSTALLATION



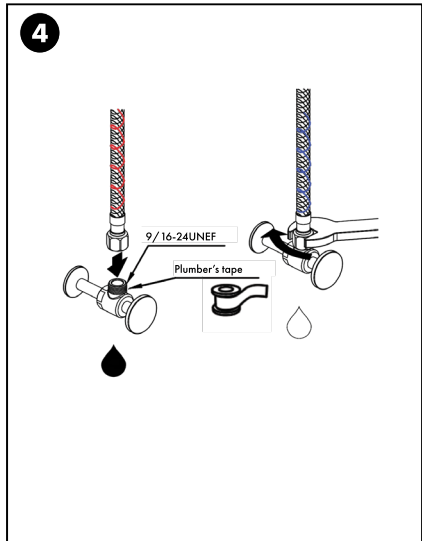
Loosen the fixing nut and screws and put aside.



Mount faucet to counter top.



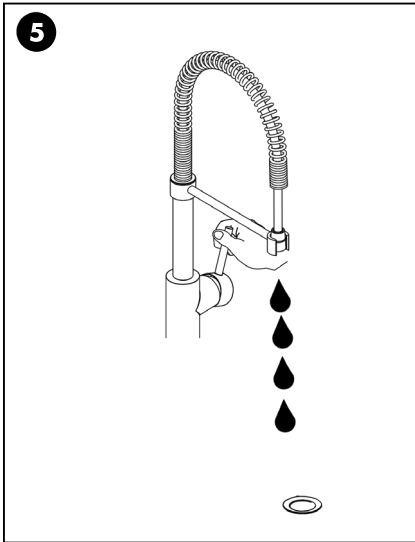
Secure the hardware into place with the base O-ring, nuts, and screws.



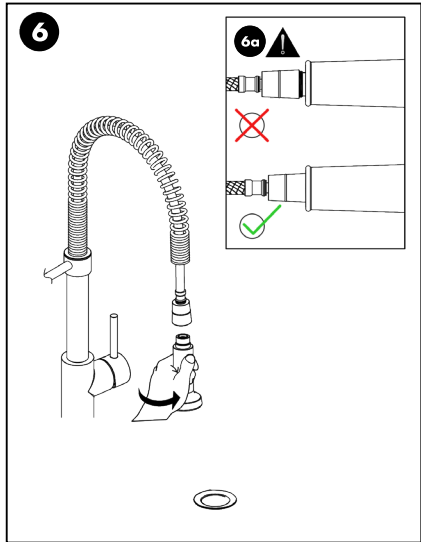
Secure the hoses to the hot (red) and cold (blue) lines appropriately.

SPRING FAUCETS

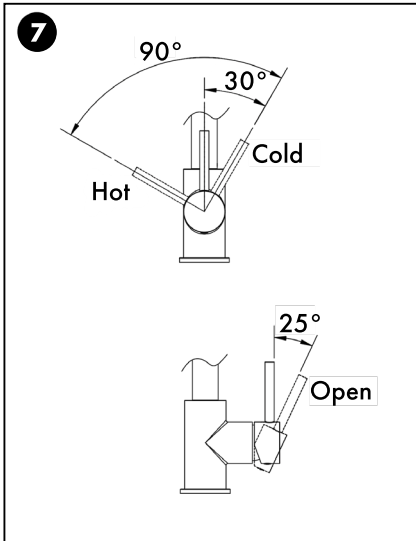
OPERATION



Test the faucet.

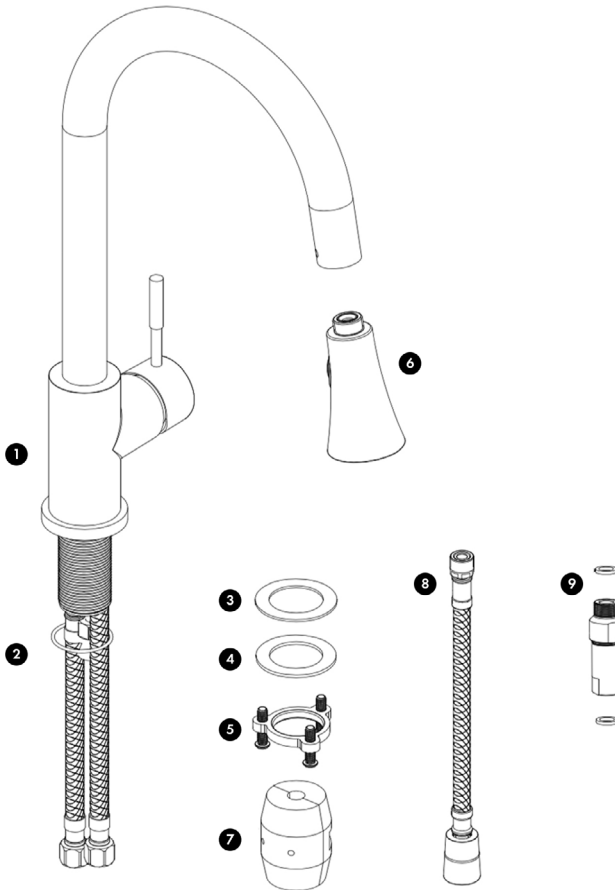


Make sure that the spray head is properly secured.



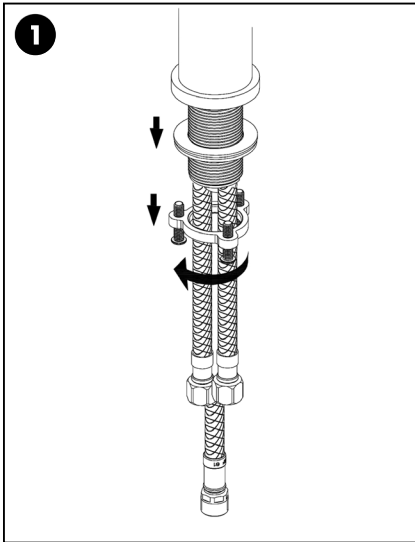
Review the diagram to understand the hot, cold, and open settings.

PULL DOWN FAUCETS BEFORE INSTALLATION

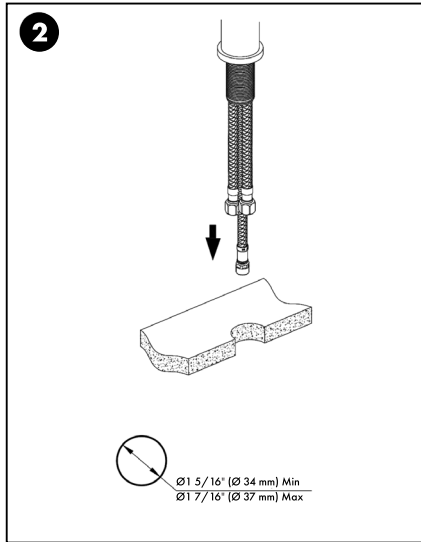


1. Faucet Body
2. Base O-Ring
3. Rubber Washer
4. Metal Washer
5. Fixing Nut and Screws
6. Spray Head
7. Weight
8. Water Line
9. Check Valve Assembly

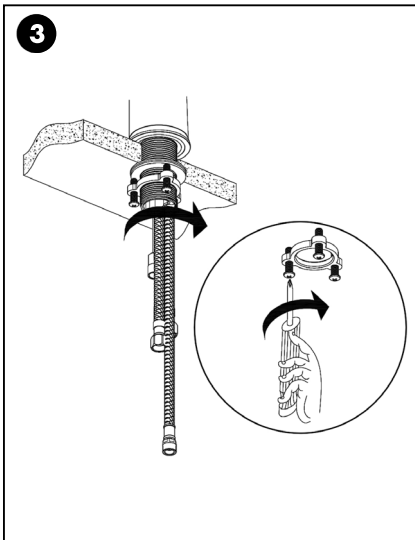
PULL DOWN FAUCETS INSTALLATION



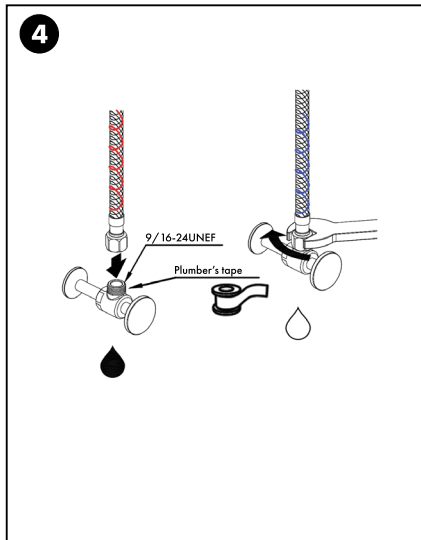
Loosen the fixing nut and screws and put aside.



Mount faucet to counter top.

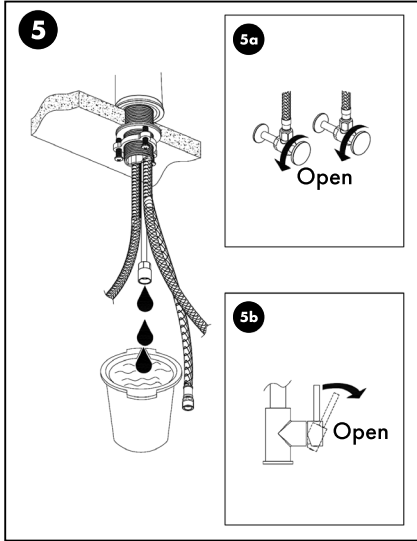


Secure the hardware into place with the base O-ring, nuts, and screws.

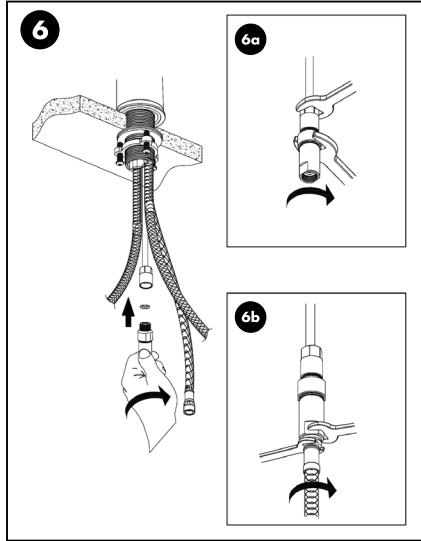


Secure the hoses to the hot and cold lines appropriately.

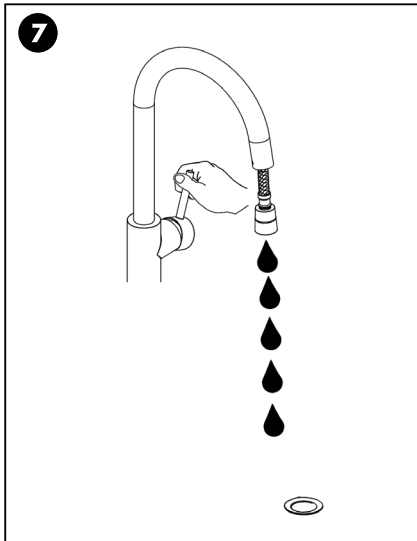
PULL DOWN FAUCETS INSTALLATION



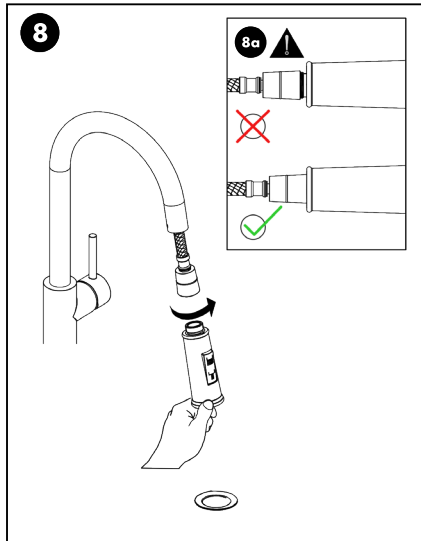
Drain the valve.



Secure the hardware into place.



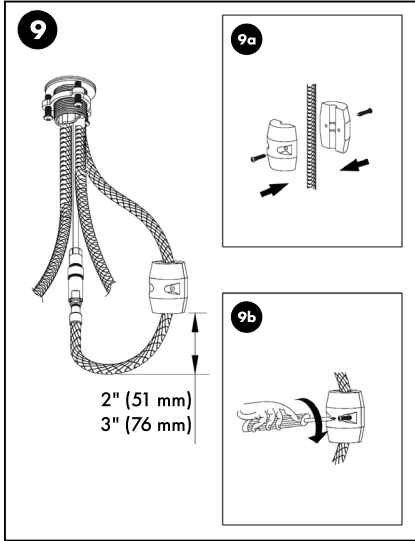
Test the faucet.



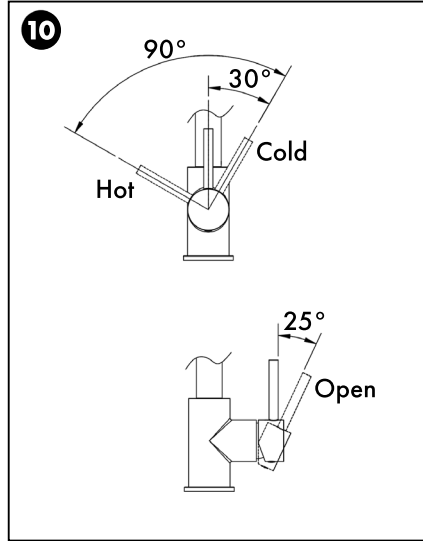
Make sure that the spray head is properly secured.

PULL DOWN FAUCETS

OPERATION

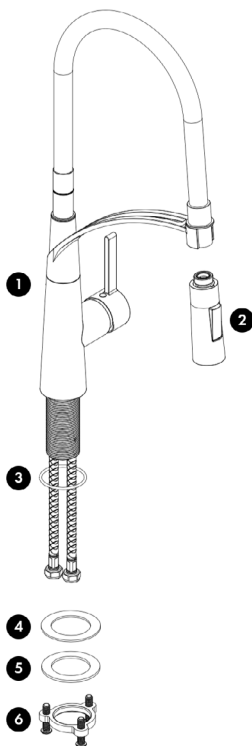


Apply the weight to the center of the hose for even distribution.



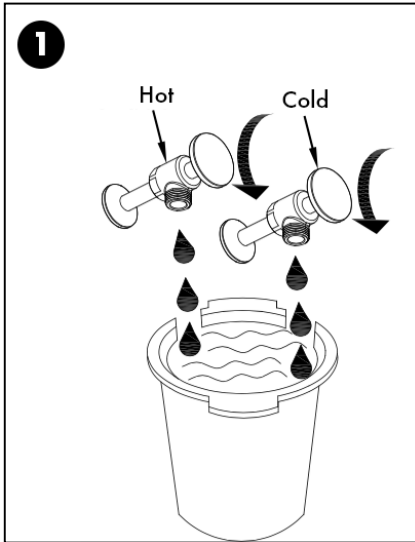
Review the diagram to understand the hot, cold, and open settings.

DA VINCI PULL DOWN FAUCET BEFORE INSTALLATION

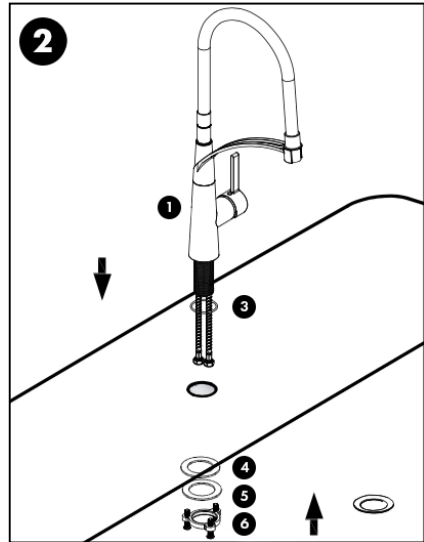


1. Faucet Body
2. Spray Head
3. Base O-Ring
4. Rubber Washer
5. Metal Washer
6. Fixing Nut and Screws

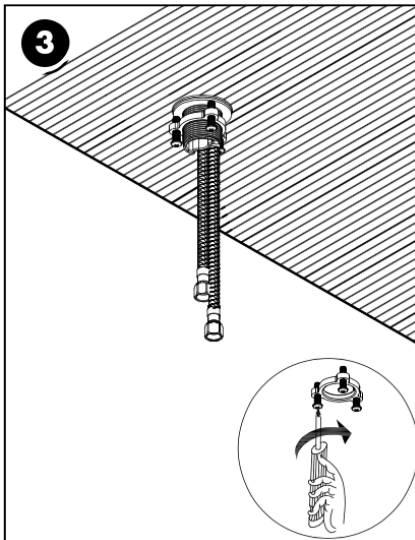
DA VINCI PULL DOWN FAUCET INSTALLATION



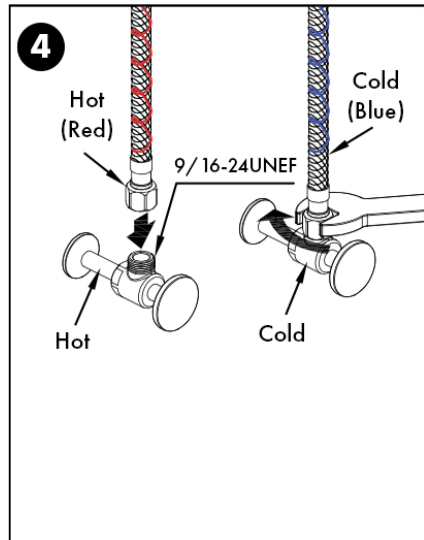
Turn off the water valves and place a bucket beneath, in case of dripping.



Mount the faucet to the counter top.

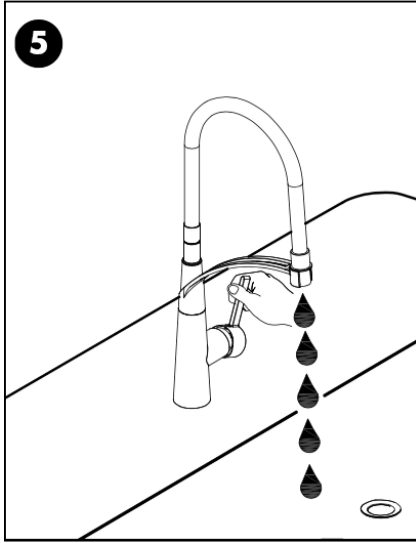


Secure the hardware into place with the base O-ring, nuts, and screws.

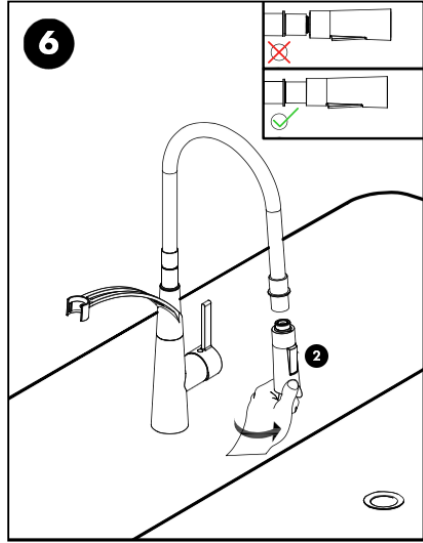


Attach the hot and cold lines to the valves appropriately.

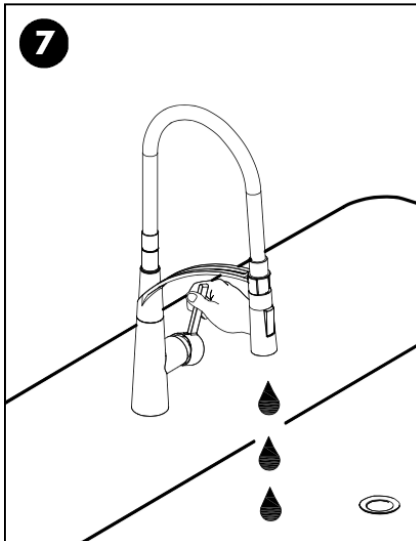
DA VINCI PULL DOWN FAUCET OPERATION



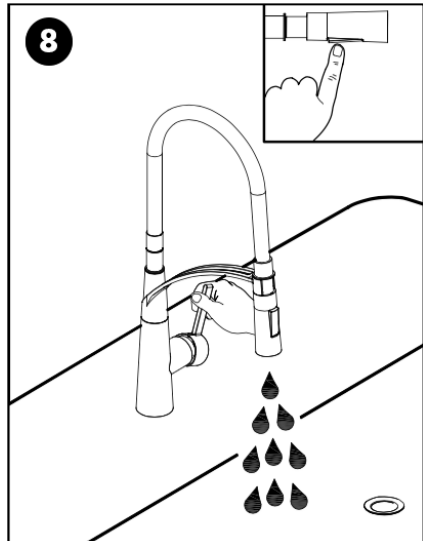
Test the faucet before installing the spray head.



Make sure that the spray head is properly secured.



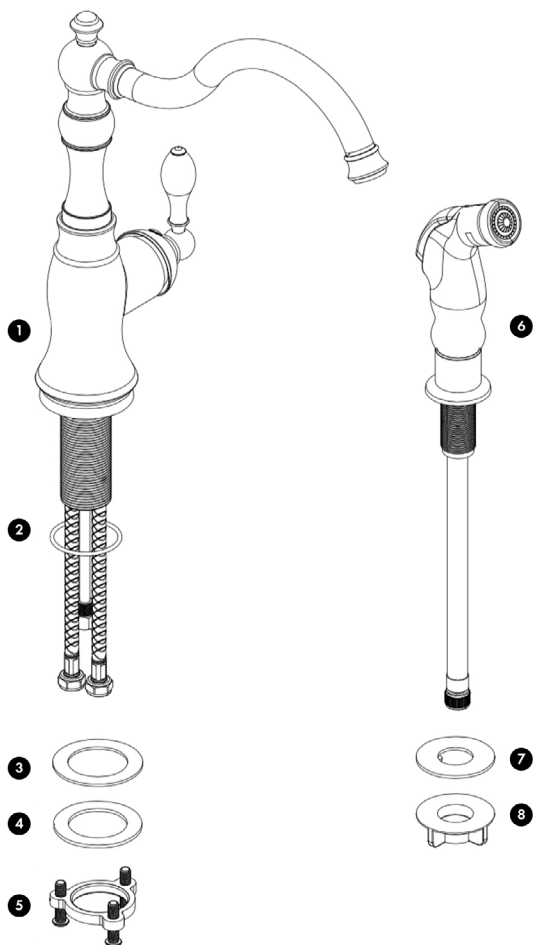
Test the faucet.



Press the button to switch from stream to spray.

SINGLE HANDLE FAUCETS

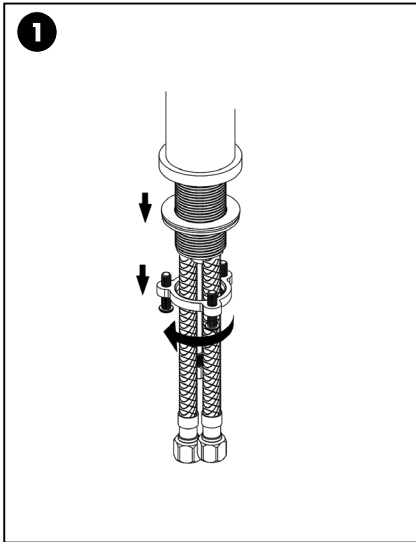
BEFORE INSTALLATION



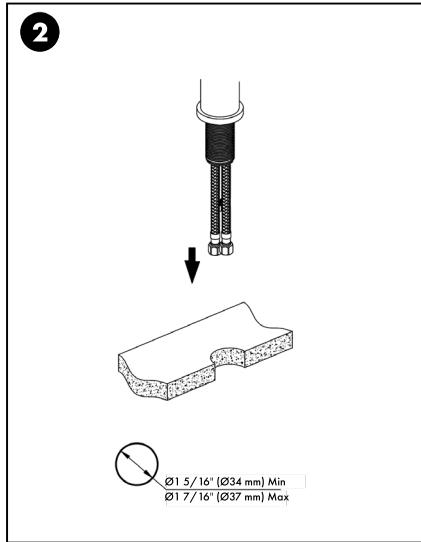
1. Faucet Body
2. Base O-Ring
3. Rubber Washer
4. Metal Washer
5. Fixing Nut and Screws
6. Spray Head
7. Washer
8. Nut

SINGLE HANDLE FAUCETS

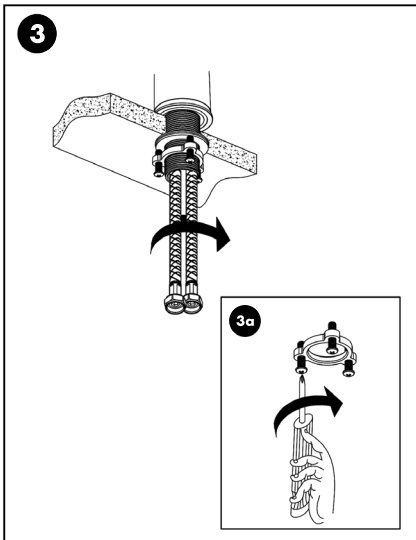
INSTALLATION



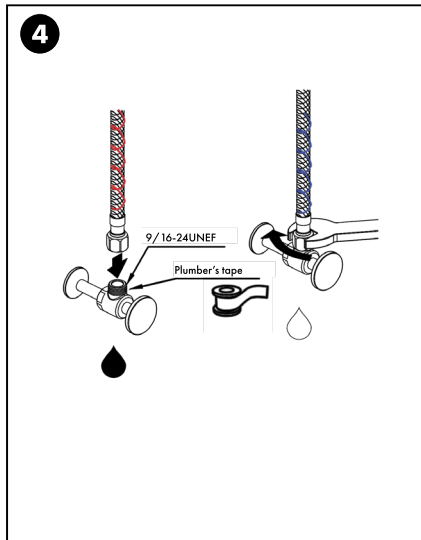
Loosen the fixing nut and screws and put aside.



Mount faucet to counter top.



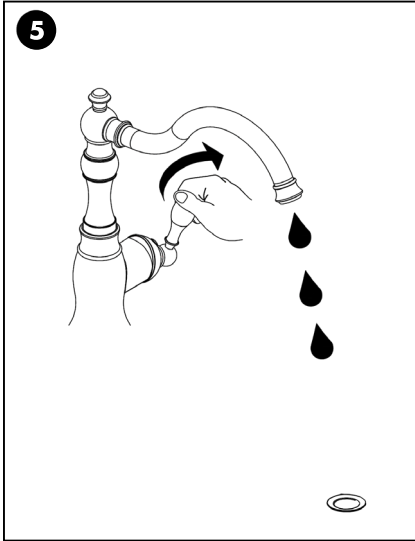
Secure the hardware into place with the base O-ring, nuts, and screws.



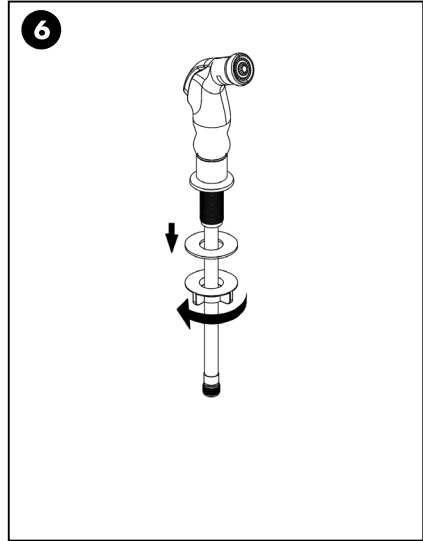
Secure the hoses to the hot and cold lines appropriately.

SINGLE HANDLE FAUCETS

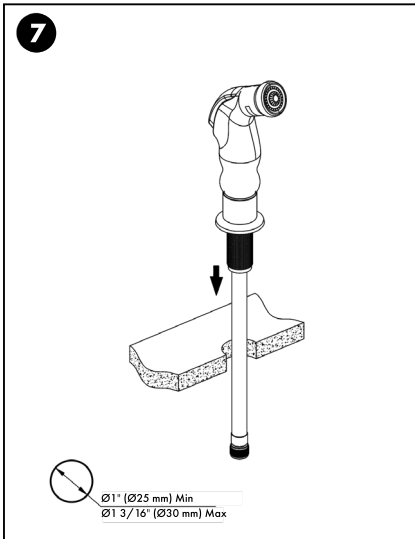
INSTALLATION



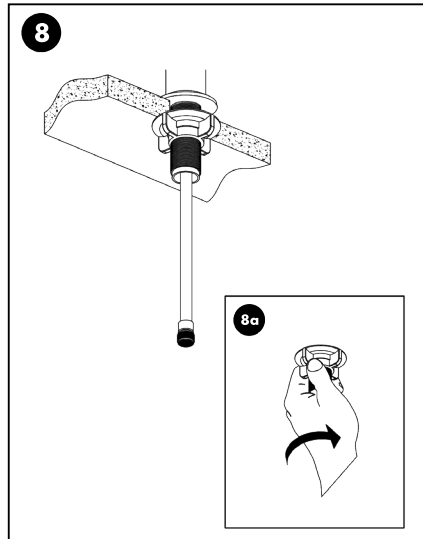
Test the faucet.



Loosen the washer on the spray head.



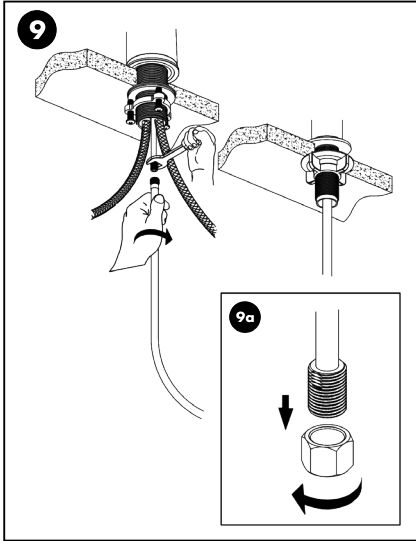
Mount spray head to counter top.



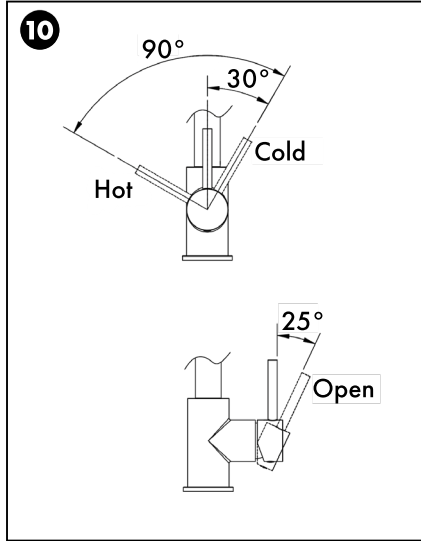
Secure the hardware into place with nuts and screws.

SINGLE HANDLE FAUCETS

OPERATION



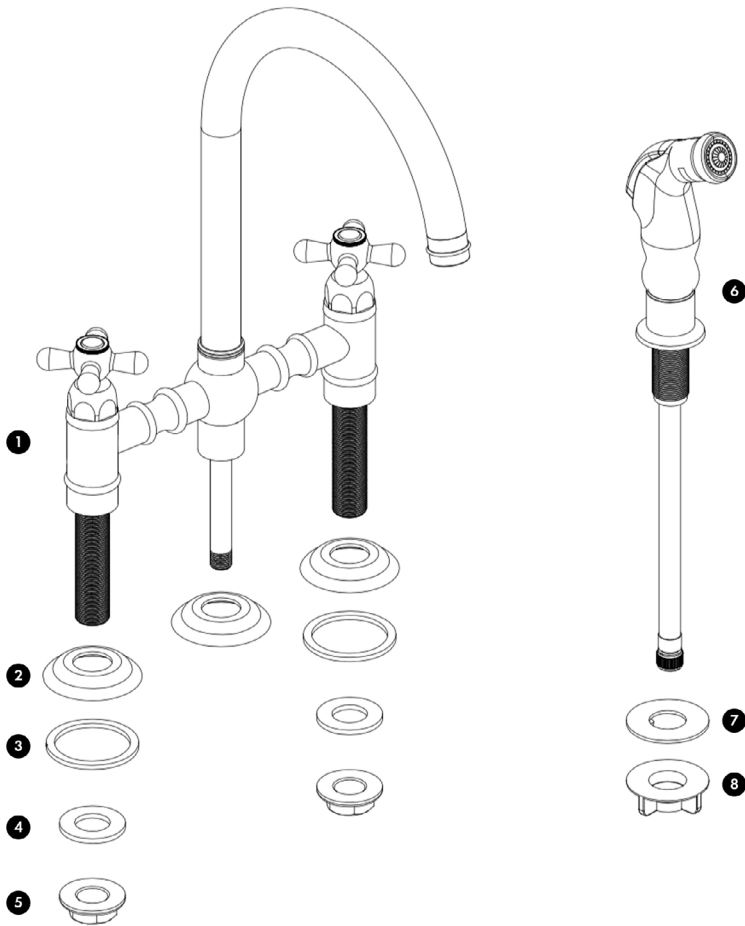
Tighten the hardware.



Review the diagram to understand the hot, cold, and open settings.

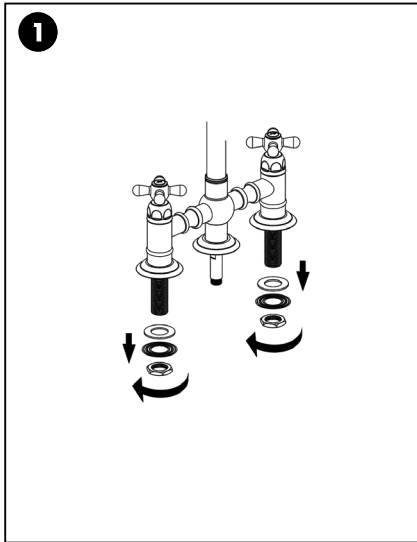
DOUBLE HANDLE FAUCETS

BEFORE INSTALLATION

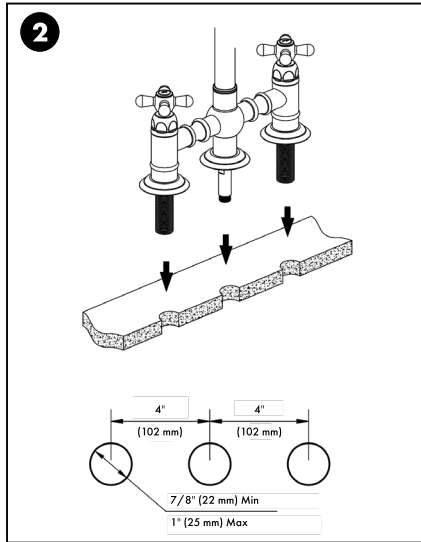


1. Faucet Body
2. Base O-Ring
3. Rubber Washer
4. Metal Washer
5. Fixing Nut and Screws
6. Spray Head
7. Washer
8. Nut

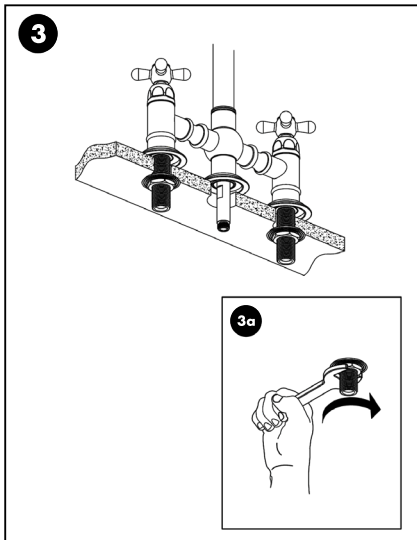
DOUBLE HANDLE FAUCETS INSTALLATION



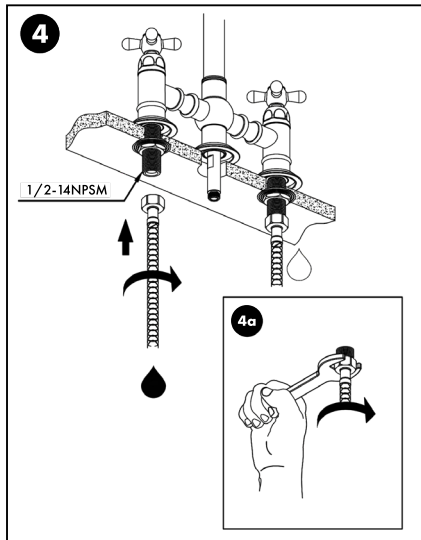
Loosen the fixing nut and washers and put aside.



Mount faucet to counter top.



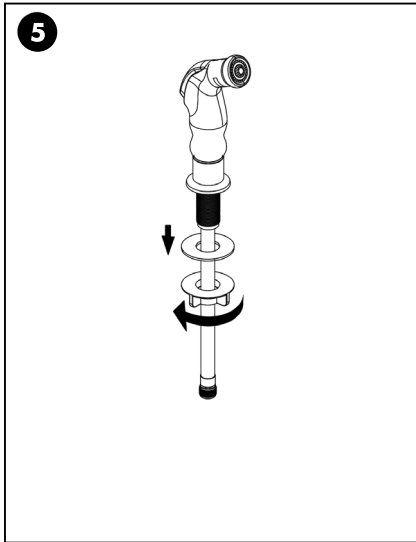
Secure the hardware into place with the base O-ring, nuts, and screws.



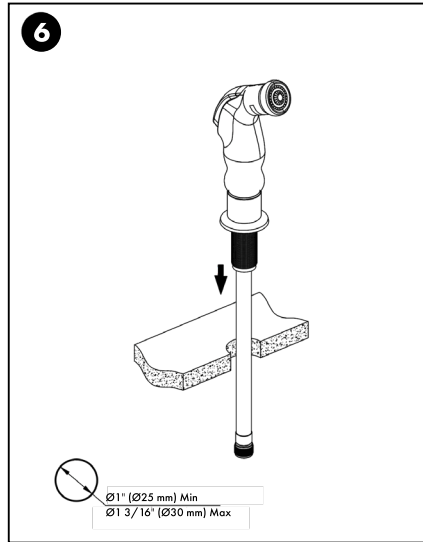
Secure the hoses to the hot and cold lines appropriately.

DOUBLE HANDLE FAUCETS

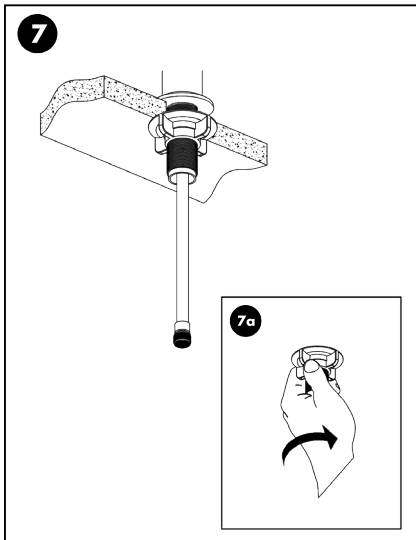
INSTALLATION



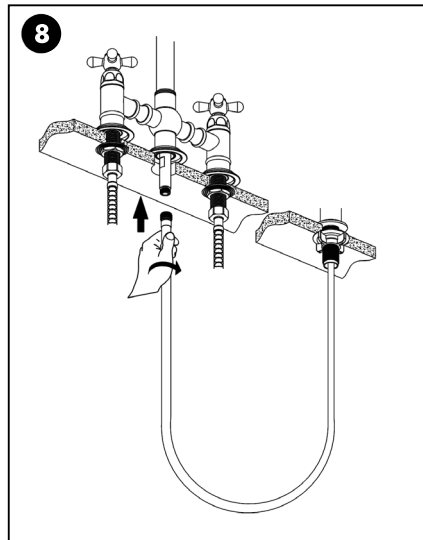
Loosen the washer on the spray head.



Mount spray head to counter top.

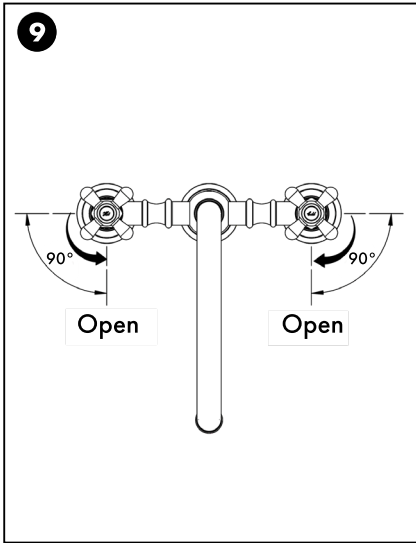


Secure the hardware into place with nuts and screws.



Use the hose to connect the spray head and main faucet head.

DOUBLE HANDLE FAUCETS INSTALLATION



Review the diagram to understand the hot, cold, and open settings.

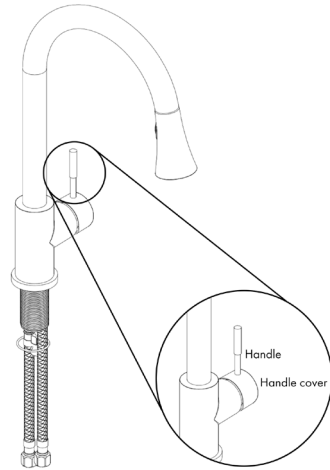
CARE AND MAINTENANCE

To keep the product clean and shining, follow the steps below:

1. Rinse clean with water and dry with a soft cloth.
2. Do not clean with soaps, acid, polish, abrasives, or harsh cleaners.
3. Do not use cloth with a coarse surface.
4. Unscrew the aerator and clean when necessary.

To tighten the handle:

1. Unscrew the handle from the handle cover by turning it counterclockwise. This will expose the set screw.
2. Using the included 2.5 mm Allen key, loosen the set screw by turning it counterclockwise.
3. Remove the handle cover and place it back on to reset it, being sure to align the set screw with the screw hole.
4. Tighten the set screw with the Allen key.
5. Screw the handle back onto the handle cover by turning it clockwise.



TROUBLESHOOTING

PROBLEM	POSSIBLE CAUSE	SOLUTIONS
There is leakage under the handle.	The locking nut has come loose.	<p>Unscrew the lever on the handle by hand. Loosen set screw with a hex wrench.</p> <p>Remove the handle and unscrew trim cap by hand.</p> <p>Tighten locking nut with an adjustable wrench.</p>
Water will not shut off completely.	Cartridge may be defective.	<p>Unscrew the level on the handle by hand. Loosen set screw with a hex wrench.</p> <p>Remove the handle and unscrew trim cap by hand.</p> <p>Unscrew the locking nut with an adjustable wrench.</p> <p>Remove ceramic disc cartridge. Check for cracks.</p>
There is a leak between the spray head and the hose.	The spray head may be loose or the washer is not seated correctly in the hose connection.	<p>Tighten the spray head by hand until snug.</p> <p>Make sure the washer is seated correctly.</p>

WARRANTY

COVERAGE

ZLINE Kitchen and Bath ("ZLINE") plumbing products have a limited lifetime warranty from the original purchase date for the original purchaser of the product.

ZLINE warranty periods begin from the original date of product delivery and solely cover the original purchaser of the product, delivered new and in its original carton. ZLINE will provide free-of-charge, non-consumable replacement parts for the components that failed due to manufacturing defects. It is the responsibility of the customer to install all replacement parts, as ZLINE does not perform service repairs on its plumbing products.

ZLINE's liability is limited to the original purchase price of the product. Additional injuries, losses, damages, or other inconveniences caused by product malfunction or defects in materials are not covered under the terms of this warranty.

TERMS

ZLINE warranties apply only to the original purchaser of a ZLINE product installed for normal residential use. This is defined as a single-family, residential dwelling in a non-commercial setting. Any warranty claim stemming from installation, operation, or any other use within a commercial setting is not covered under this limited warranty.

Commercial settings include, but are not limited to: schools, churches, hotels, restaurants, vacation rentals such as Airbnb, daycare centers, private clubs, fire stations, common areas in multi-family dwellings, nursing homes, food service locations, and institutional food service locations such as hospitals or correctional facilities.

This warranty is non-transferable and will not under any circumstance be extended based on the date of installation — the warranty period takes effect from the date of delivery and only covers the original purchaser. The warranty applies only to products installed in the contiguous United States and the District of Columbia.

Out-of-pocket payments will not be reimbursed for replacement parts unless prior approval is received from ZLINE. Unapproved out-of-pocket payments for parts will not be reimbursed. Out-of-pocket payments for any type of service will not be reimbursed, as ZLINE does not perform service repairs on its plumbing products. All warranty procedures must be followed to maintain warranty coverage.

WARRANTY

If ZLINE is unable to replace the defective part after a reasonable number of attempts, ZLINE reserves the right to offer to replace the product or provide the original purchaser a full refund of the purchase price of the product (not including installation, removal, or other charges that were not included in the original purchase price).

The original purchaser of the product must provide the original proof of purchase, including the purchase date, when filing a claim to obtain replacement parts or refunds. Additionally, the original purchaser of the product must provide the serial number of the product when filing a claim to obtain replacement parts or refunds.

This warranty shall not apply to any ZLINE product in which the original factory serial number has been removed, altered, or cannot be readily determined for any reason. Further, ZLINE is not responsible for damage resulting from, but not limited to: shipment, delivery, or improper installation; negligence or improper maintenance, misuse, or abuse of the product; unauthorized alteration, modification, or tampering with the product; accident, fire, floods, pest infestations, pandemics, natural disasters, or any other unpreventable or unexplained acts of nature, commonly referred to as "acts of God"; water leaks or water damages caused by improper water supply or water connections associated with installation or disassembly of the product; and service to correct installation not in accordance with the instructions contained in ZLINE's product manuals and/or with local government codes.

Additionally, this plumbing warranty does not apply to aesthetic damage, scratches, or natural wear caused by normal use; second-hand, open box products, or products purchased from an unauthorized retailer; consumable parts including, but not limited to, touch in valves, aerators, diverter handles, sprayers, spouts, hoses, and flange covers; and damages, problems, or any type of performance-related issues stemming from alteration or tampering with the product, including, but not limited to, painting stainless steel, black stainless, Satin Stainless Steel, or any other finishes or any portion of the product's interior or exterior.

Information contained within ZLINE's installation and user manuals, in addition to product information included on ZLINE's website and all related digital listings, do not cover every possible condition and situation that may occur during the installation or operation of ZLINE products.

WARRANTY

ZLINE reserves the right to make changes at any time to its products when considered safe, necessary, and useful. Always check the ZLINE website for the most up-to-date version of its product manuals: www.zlinekitchen.com/pages/manuals.

Do not install or operate any ZLINE product if it has missing or broken parts or if it arrives damaged due to shipping. If ZLINE products arrive damaged, contact ZLINE Customer Experience at 1-614-777-5004 for help. Failure to report a damaged appliance prior to installation or operation may void the warranty. ZLINE does not perform service repairs on its plumbing products. ZLINE disclaims responsibility for damage or injury caused by improper installation or use of any of its products.

WARRANTY



SERVICE

For warranty service, please contact our Customer Service team at 1-614-777-5004 or visit www.zlinekitchen.com/contact to utilize our online Customer Experience Portal.



Scan the QR code to view the most up-to-date version of our User Manual and Installation Manual.



Need to purchase a part or accessory for your ZLINE product?
Visit www.zlineparts.com, ZLINE's official parts distribution partner.

3.0.1

zlinekitchen.com

1-614-777-5004

contact@zlinekitchen.com

ZLINE
ATTAINABLE LUXURY®