



inspirations

monogram 2005



Table of Contents

2	Introduction	
12	Refrigeration	
	Selecting a Refrigerator	14-15
	Built-In Stainless Steel-Wrapped Refrigerators	16-17
	Built-In Side-by-Side Refrigerators	18-19
	Built-In Bottom-Freezer Refrigerators	20-21
	Built-In All-Refrigerators and All-Freezers	22-23
	Stainless Steel-Wrapped Free-Standing Refrigerators	24-25
	Product Specifications	26-29
30	Refrigeration Modules	
	Double-Drawer Refrigerator	32-33
	Fresh-Food Refrigerator	32-33
	Bar Refrigerator with Icemaker	34-35
	Outdoor/Indoor Refrigerator	34-35
	Wine Reserves and Beverage Centers	36-37
	Product Specifications	38-39
40	Icemakers and Compactors	
42	Dishwashers	
	Fully Integrated Dishwashers	44-46
	18" Dishwasher	46
	Product Specifications	47
48	Cooktops	
	Gas Cooktops	50
	Electric Cooktops	52
	Product Specifications	53
54	Built-In Cooking Products	
	Wall Oven with Advantium® Speedcook Technology	56-57
	Electronic Wall Oven with Trivection™ Technology	58
	Electronic Convection Wall Oven	59
	European Convection Wall Oven	60-61
	Professional Wall Ovens	60-61
	Product Specifications	62-65
	Microwave Ovens	66
	Warming Drawers	67
	Product Specifications	68-69
70	Professional Cooking Products	
	48" Dual-Fuel Professional Ranges	72-73
	36" and 30" Dual-Fuel Professional Ranges	74-75
	48" and 36" Professional Cooktops	76-77
	Product Specifications	78-81
82	Ventilation Systems	
	Chimney Hoods	84-85
	Professional Hoods	86-87
	Telescopic Downdraft Vents	86-87
	Product Specifications	88-91
92	Outdoor Cooking Products	
	48" and 36" Outdoor Cooking Centers	94
	27" and 24" Cooking Centers	95
	Dual-Burner Cooktops	95
	Outdoor Cooking Accessories	96
	Product Specifications	97-98

Imagine.







Imagine creating a meal so gloriously delicious, it propels you to star status among family and friends.





Imagine bringing a room to beautiful, breathtaking life, making it come alive with your own signature style.





Imagine making guests feel relaxed and refreshed, without having to orchestrate a major production.





For all that you imagine for your home, you can find inspiration
in the Monogram Collection™.

With Monogram® as your muse, you can turn a kitchen into a canvas for personal expression, a meal into a culinary *coup de maître*. Beautiful to behold and enjoyable to use, Monogram appliances open up a world of wonderfully creative and palatable possibilities.





Refrigerators

Inspiration can come from anywhere. A picture. A sound. Or even a single word. For a sudden burst of fresh inspiration, look to Monogram® refrigerators, which give you unlimited options for enhancing and personalizing your kitchen.



Two 36" Bottom-Freezer Refrigerators ZIC360NRLH and ZIC360NRRH



Free-Standing Refrigerator ZFSB23DRSS



36" Built-In All-Freezer ZIFS36NMRH

Above left. Custom wood panels and a unified grille integrate Monogram bottom-freezer refrigerators with surrounding cabinetry. **Above center.** The Monogram free-standing stainless steel-wrapped refrigerator offers the dual benefits of elegant design and flexible placement within the home. **Above right.** The Monogram 36" built-in all-freezer or all-refrigerator offers a sophisticated look, while also providing ample storage. **Far right.** The Monogram built-in stainless steel-wrapped refrigerator is seamlessly finished at every edge for a truly stunning look.



REFRIGERATION

42" Stainless Steel-Wrapped Refrigerator ZISS420DRSS



Selecting a Refrigerator

Size

Choose the refrigerator that best suits your space. The most important consideration in the planning process is overall size. Refrigerator widths range from 36" to 48" for built-in installations. Free-standing models have a width of 36". For maximum design impact and storage flexibility, consider two 36" built-in units installed together, using a unified grille kit.



72" Wide (36" all-refrigerator and 36" all-freezer installed side by side)

48" Wide

42" Wide

36" Wide

36" Wide

————— built-in —————

————— free-standing —————

Style

Consider how you use your refrigerator. Once you've determined which size is best for your kitchen, choose the style that best suits your personal taste and storage needs.

If you prefer a dispenser model, choose a Monogram® side-by-side refrigerator. Or, if you're looking for a sleek single-door design, consider the Monogram bottom-freezer or an all-refrigerator and all-freezer.



Side-by-side

Bottom-Freezer

All-Freezer

All-Refrigerator





Design Options

Choose the finish and door-panel type that ideally complement your kitchen and lifestyle.

Color finishes: Wrapped stainless steel, stainless steel panels, black and white panels are available from Monogram; dispensers are available in black or white.*

Customization: Custom door panels can be ordered from your cabinetmaker. A simple statement is achieved with standard trim and custom 1/4" framed panels. For a frameless effect, use 3/4" overlay panels.

You can further customize models with door handles from a local design center or hardware store. Or, order Monogram tubular handles, designed for use with 3/4" overlay panels.

*Side-by-side models only



Customization

1/4" Framed Panels. Exterior trim, which comes installed on the refrigerator, accepts custom panels. Simply insert the panels of your choice.



Dispenser refrigerator with standard handles and framed panels.

3/4" Overlay Panels. For a frameless appearance, use custom overlay panels.



Dispenser refrigerator with standard handles and overlay panels.



Dispenser refrigerator with custom handles and overlay panels.



48" Side-by-Side Refrigerator ZISS480DRSS

Built-In Stainless Steel-Wrapped Refrigerators

48", 42" and 36" Side-by-Side Refrigerators



ZISS480DRSS 48"-wide, 30.7-cu.-ft. refrigerator with dispenser

ZISS480NRSS 48"-wide, 30.6-cu.-ft. refrigerator without dispenser (not shown)



ZISS420DRSS 42"-wide, 26.1-cu.-ft. refrigerator with dispenser

ZISS420NRSS 42"-wide, 26.0-cu.-ft. refrigerator without dispenser (not shown)



ZISS360DRSS 36"-wide, 21.7-cu.-ft. refrigerator with dispenser

ZISS360NRSS 36"-wide, 21.6-cu.-ft. refrigerator without dispenser (not shown)

36" Bottom-Freezer Refrigerators



ZICS360NRRH 36"-wide, 20.6-cu.-ft. refrigerator with right-hinged door

ZICS360NRLH 36"-wide, 20.6-cu.-ft. refrigerator with left-hinged door (not shown)



ZIRS36NMLH 36"-wide, 21.9-cu.-ft. all-refrigerator with left-hinged door

ZIRS36NMRH 36"-wide, 21.9-cu.-ft. all-refrigerator with right-hinged door (not shown)



ZIFS36NMRH 36"-wide, 21.9-cu.-ft. all-freezer with right-hinged door

ZIFS36NMLH 36"-wide, 21.9-cu.-ft. all-freezer with left-hinged door (not shown)



General Features

Sleek stainless appearance. Heavy-gauge stainless steel extends completely across the doors, wrapping beautifully around the edges. Long, slim tubular handles enhance the overall look and feel.

ENERGY STAR®-qualified. As an ENERGY STAR partner, GE has determined that Monogram® stainless steel-wrapped side-by-side refrigerators, bottom-freezer refrigerators and all-refrigerators meet the ENERGY STAR guidelines for energy efficiency.

See the following pages for additional feature information on these models.



48" Built-In Custom Side-by-Side Refrigerator ZISB480DR



48", 42" and 36" Built-In Custom Side-by-Side Refrigerators



ZIS480NR 48"-wide, 30.6-cu.-ft. non-dispenser refrigerator with stainless steel door panels

ZISB480DR 48"-wide, 30.7-cu.-ft. refrigerator with black dispenser and door panels

ZISW480DR 48"-wide, 30.7-cu.-ft. refrigerator with white dispenser and door panels

ZIS420NR 42"-wide, 26.0-cu.-ft. non-dispenser refrigerator with stainless steel door panels

ZISB420DR 42"-wide, 26.1-cu.-ft. refrigerator with black dispenser and door panels

ZISW420DR 42"-wide, 26.1-cu.-ft. refrigerator with white dispenser and door panels

ZIS360NR 36"-wide, 21.6-cu.-ft. non-dispenser refrigerator with stainless steel door panels

ZISB360DR 36"-wide, 21.7-cu.-ft. refrigerator with black dispenser and door panels

ZISW360DR 36"-wide, 21.7-cu.-ft. refrigerator with white dispenser and door panels

General Features

Customization. Monogram® built-in trimmed refrigerators require door and grille panels. Models shown above are fitted with 1/4" door panels available from your Monogram dealer. They also accept custom overlay panels and custom handles.

Direct airflow. Cool air is delivered straight from the overhead evaporator to freezer and fresh food compartments, allowing independent airflow for each food zone without any direct air exchange.

Spacious interior. The overhead location of the evaporator makes Monogram side-by-side refrigerators among the largest-capacity built-in refrigerators available.

ENERGY STAR®-qualified. As an ENERGY STAR partner, GE has determined that all Monogram side-by-side refrigerators meet the ENERGY STAR guidelines for energy efficiency.

Dispenser with proximity sensor. Tall design accommodates glassware of all sizes, from pitchers to tumblers. Control graphics light up as you approach and automatically switch off when you walk away.



For kosher kitchens, an optional Star-K-certified kit allows Monogram side-by-side refrigerators to operate in Sabbath mode.



Two 36" Bottom-Freezer Refrigerators ZIC360NRLH and ZIC360NRRH

36" Built-In Custom Bottom-Freezer Refrigerators



ZIC360NRLH 36"-wide, 20.6-cu.-ft. refrigerator with left-hinged door (white, stainless steel and black door panels available)

ZIC360NRRH 36"-wide, 20.6-cu.-ft. refrigerator with right-hinged door (white, stainless steel and black door panels available)

General Features

Customization. Monogram® built-in trimmed refrigerators require door and grille panels. Models shown above are fitted with 1/4" door panels available from your Monogram dealer. They also accept custom overlay panels and custom handles.

Temperature management system. The temperature management system with upfront electronic controls delivers cool, fresh air to every shelf.

Flexible storage. In the fresh-food compartment, four split shelves and six adjustable door bins offer convenient access to contents. The large full-extension freezer drawer has an automatic icemaker and storage bins that slide out independently of one another for easy loading and unloading.

ENERGY STAR®-qualified. As an ENERGY STAR partner, GE has determined that all Monogram bottom-freezer refrigerators meet the ENERGY STAR guidelines for energy efficiency.



For kosher kitchens, an optional Star-K-certified kit allows Monogram bottom-freezer refrigerators to operate in Sabbath mode.



36" Built-In All-Freezer **ZIF36NMLH** and 36" Built-In All-Refrigerator **ZIR36NMRH**

36" Built-In Custom All-Refrigerators and All-Freezers



ZIR36NMRH 36"-wide, 21.9-cu.-ft. all-refrigerator with right-hinged door (white, stainless steel and black door panels available)

ZIR36NMLH 36"-wide, 21.9-cu.-ft. all-refrigerator with left-hinged door (white, stainless steel and black door panels available)



ZIF36NMLH 36"-wide, 21.9-cu.-ft. all-freezer with left-hinged door (white, stainless steel and black door panels available)

ZIF36NMRH 36"-wide, 21.9-cu.-ft. all-freezer with right-hinged door (white, stainless steel and black door panels available)

General All-Refrigerator Features

Adjustable shelves and bins. Split shelves move up and down for custom storage arrangement, and raised edges help contain spills. Six adjustable door bins (two for gallon-size containers) add important storage flexibility. There are also two door dairy compartments that seal for longer freshness.

Produce and snack pans. Vegetable compartments with individual humidity controls, as well as sealed snack pans, glide open smoothly.

ENERGY STAR®-qualified. As an ENERGY STAR partner, GE has determined that the ZIR36NM meets the ENERGY STAR guidelines for energy efficiency.

General All-Freezer Features

Adjustable shelves and bins. Five wire shelves move up and down for custom storage arrangement. Ten adjustable door bins (two for gallon-size containers) enhance storage flexibility.

Specialized storage baskets. Eight pullout wire baskets with clear-view fronts (two with lids) allow compartmentalized storage for different food types.

General All-Refrigerator and All-Freezer Features

Customization. All Monogram® built-in refrigerators require door and grille panels. Models can be equipped with 1/4" door panels available from your Monogram dealer (white or black Lexan® and stainless steel). Also available is a unified-grille panel kit for either 3/4"-thick custom panels or stainless steel wrap.

Left- or right-hinged door swing. Door-swing preference must be specified when ordering (handles and hinges are not reversible).





Free-Standing Refrigerator ZFSB23DRSS

Stainless Steel-Wrapped Free-Standing Refrigerators

36" Side-by-Side Refrigerators



ZFSB26DRSS 36"-wide, 26-cu.-ft. refrigerator with dispenser



ZFSB23DRSS 36"-wide, 23-cu.-ft. counter-depth refrigerator with dispenser

General Features

All-over stainless appearance. At once dramatic and restrained, Monogram® stainless steel-wrapped refrigerators are smooth from edge to edge, with no exposed screws or rivets. For a built-in look, choose the counter-depth model, which aligns nearly flush with surrounding cabinetry.

Climate-control drawer. Functions like a refrigerator within a refrigerator. Precise controls allow you to express-chill beverages, express-thaw meats and select specific temperatures for perishable foods.

Extra-tall dispenser. Accommodates glassware of all sizes, from pitchers to tumblers.

ENERGY STAR®-qualified. As an ENERGY STAR partner, GE has determined that the ZFSB26DRSS and ZFSB23DRSS meet the ENERGY STAR guidelines for energy efficiency.

SmartWater™ filtration system delivers clean, great-tasting water and ice through the dispenser.



Customization specifications



48" Side-by-side refrigerators

Models	ZISW480DR	ZISB480DR	ZIS480NR
Custom options			
Stainless steel tubular handles for overlay panels	ZKHSS2	ZKHSS2	ZKHSS2
1/4" Black acrylic panels		ZPB480D	ZPB480N
1/4" White acrylic panels	ZPW480D		
1/4" Stainless steel panels	ZPS480D	ZPS480D	ZPS480N

42" Side-by-side refrigerators

Models	ZISW420DR	ZISB420DR	ZIS420NR
Custom options			
Stainless steel tubular handles for overlay panels	ZKHSS2	ZKHSS2	ZKHSS2
1/4" Black acrylic panels		ZPB420D	ZPB420N
1/4" White acrylic panels	ZPW420D		
1/4" Stainless steel panels	ZPS420D	ZPS420D	ZPS420N

36" Side-by-side refrigerators

Models	ZISW360DR	ZISB360DR	ZIS360NR
Custom options			
Stainless steel tubular handles for overlay panels	ZKHSS2	ZKHSS2	ZKHSS2
1/4" Black acrylic panels		ZPB360D	ZPB360N
1/4" White acrylic panels	ZPW360D		
1/4" Stainless steel panels	ZPS360D	ZPS360D	ZPS360N

36" Bottom-freezer refrigerators

Models	ZIC360NRRH	ZIC360NRLH	ZICS360NRRH	ZICS360NRLH
Custom options				
Stainless steel tubular handles for overlay panels	ZKHCSS2	ZKHCSS2		
Unified grille kit	ZUG2	ZUG2	ZUGSS2	ZUGSS2
1/4" Black acrylic panels	ZPBC360	ZPBC360		
1/4" White acrylic panels	ZPWC360	ZPWC360		
1/4" Stainless steel panels	ZPSC360	ZPSC360		

36" All-refrigerators and all-freezers

Models	All-refrigerators All-freezers	ZIR36NMRH ZIF36NMRH	ZIR36NMLH ZIF36NMLH	ZIRS36NMRH ZIFS36NMRH	ZIRS36NMLH ZIFS36NMLH
Custom options					
Stainless steel panels	ZWSR36	ZWSR36			
White Lexan® panels	ZWWR36	ZWWR36			
Black Lexan panels	ZWBR36	ZWBR36			
Custom handle kit for framed 1/4"-thick panels	ZKHR1	ZKHR1			
Tubular stainless steel handles for 1/4"-thick panels	ZKHRSS1	ZKHRSS1			
3/4"-thick custom panel kit	ZKTR36RH	ZKTR36LH			
Custom handles for overlay 3/4"-thick custom panels	ZKHTR1	ZKHTR1			
Tubular stainless steel handles for 3/4"-thick custom panels	ZKHTRSS1	ZKHTRSS1			
Adjustable grille height kit	ZGC2	ZGC2	ZGCSS36RH	ZGCSS36LH	
Unified grille panel kit for side-by-side installation	ZUG75	ZUG75	ZUGSS	ZUGSS	

Glossary of Terms

Stainless steel, white or black panels.

Factory-installed trim will accept 1/4"-thick accessory panels which are cut to size and ready to install. These panels must be ordered separately.

Tubular stainless steel handles.

Monogram stainless steel tubular handles can be used with custom panels.

Unified grille panel kit.

An optional grille panel creates a unified look above two units placed side by side.



48", 42" and 36" Built-in side-by-side refrigerators

	ZISS480DR ZISW480DR* ZISB480DR*	ZISS480NR ZIS480NR*	ZISS420DR ZISW420DR* ZISB420DR*	ZISS420NR ZIS420NR*	ZISS360DR ZISW360DR* ZISB360DR*	ZISS360NR ZIS360NR*
Description	48" built-in refrigerator with dispenser	48" built-in refrigerator	42" built-in refrigerator with dispenser	42" built-in refrigerator	36" built-in refrigerator with dispenser	36" built-in refrigerator
Capacity						
Total (cu. ft.)	30.7	30.6	26.1	26.0	21.7	21.6
Fresh food section						
Upfront electronic controls with digital readouts	•	•	•	•	•	•
Multi-shelf halogen light tower	•	•	•	•	•	•
Multi-shelf air management tower	•	•	•	•	•	•
Clear Lexar® bins and pans	•	•	•	•	•	•
Climate-control drawer with express chill, express thaw, select temp	•	•	•	•	•	•
Sealed adjustable-humidity produce pan with easy-access lid and full-extension slides	•	•	•	•	•	•
High-humidity sealed produce pan with full-extension slides	•	•	•	•	•	•
Adjustable sealed deli pan with full-extension slides	•	•	•	•	•	•
Spillproof glass shelves	3 adj./1 fixed	3 adj./1 fixed	3 adj./1 fixed	3 adj./1 fixed	3 adj./1 fixed	3 adj./1 fixed
Adjustable door bins	4	4	4	4	4	4
Gallon door storage	•	•	•	•	•	•
Sealed dairy compartment	2	2	2	2	1	1
Glass-covered butter dish, wine caddy, egg bin	•	•	•	•	•	•
Freezer section						
Multi-shelf halogen light tower	•	•	•	•	•	•
Utility baskets with full-extension slides	2	2	2	2	2	2
Adjustable wire shelves	4	4	4	4	4	4
Adjustable door bins	3	5	3	5	3	5
Automatic icemaker	•	•	•	•	•	•
Removable ice storage bin	•	•	•	•	•	•
General features						
ENERGY STAR®-qualified	•	•	•	•	•	•
Certified Sabbath mode kit	ZSAB1	ZSAB1	ZSAB1	ZSAB1	ZSAB1	ZSAB1
Disappearing electronic glass touch dispenser controls with proximity sensors	•		•		•	
Extra-tall dispenser with cubes, crushed ice and chilled water	•		•		•	
GE SmartWater™ water and ice filtration system	•	•	•	•	•	•
Industry-standard flush installation	•	•	•	•	•	•
Stainless steel tubular handles	Stainless steel-wrapped models only	Stainless steel-wrapped models only	Stainless steel-wrapped models only	Stainless steel-wrapped models only	Stainless steel-wrapped models only	Stainless steel-wrapped models only
Concealed door hinge	•	•	•	•	•	•
Easy-access hinged unified grille	•	•	•	•	•	•
Four-point leveling system	•	•	•	•	•	•
Adjustable door stop (90°/130°)	•	•	•	•	•	•
Dispenser color(s)	Black White Black	N/A	Black White Black	N/A	Black White Black	N/A
Steel toe-kick color(s)	Stainless steel White Black	Stainless steel Black	Stainless steel White Black	Stainless steel Black	Stainless steel White Black	Stainless steel Black
115 Volts/20 Amps	•	•	•	•	•	•
Overall dimensions (WxHxD in inches)	48 x 84 x 23-7/8	48 x 84 x 23-7/8	42 x 84 x 23-7/8	42 x 84 x 23-7/8	36 x 84 x 23-7/8	36 x 84 x 23-7/8
Approx. shipping weight (lbs.)	775	775	725	725	675	675
Full warranty†	2-year	2-year	2-year	2-year	2-year	2-year
Full warranty on sealed refrigeration system†	5-year	5-year	5-year	5-year	5-year	5-year
Limited warranty on sealed system parts†	12-year	12-year	12-year	12-year	12-year	12-year
Limited warranty on full-extension slides†	Lifetime	Lifetime	Lifetime	Lifetime	Lifetime	Lifetime

*Door panels required. Accepts 1/4" framed panels or 3/4" overlay panels.
 †See written warranty for details.
Refer to page 24 for customization options. Panel dimensions available on monogram.com.



For kosher kitchens, an optional Star-K-certified kit allows Monogram side-by-side refrigerators to operate in Sabbath mode.



36" Built-in bottom-freezer refrigerators

	ZICS360NRRH ZICS360NRLH ZIC360NRRH* ZIC360NRLH*
Description	36" built-in refrigerator
Capacity	
Total (cu. ft.)	20.6
Fresh food section	
Upfront electronic controls with digital readouts	•
Multi-shelf air management tower	•
Sealed adjustable-humidity produce pans with easy access lids and full-extension slides	2
Sealed deli pan with full-extension slides	2
Spillproof glass shelves	4 adj./1 fixed
Adjustable door bins	6
Gallon door storage	•
Sealed dairy compartment	2
Glass-covered butter dish	•
Wine caddy	•
Egg bin	•
Freezer section	
Freezer drawer with full-extension slides	•
Independent utility basket with full-extension slides	•
Automatic icemaker	•
Removable ice storage bin	•
General features	
ENERGY STAR®-qualified	•
Certified Sabbath mode kit	ZSAB1
GE SmartWater™ filtration system	•
Industry-standard flush installation	•
Concealed door hinge	•
Stainless steel tubular handle	Stainless steel-wrapped models only
Easy-access hinged grille	•
Unified grille kit	ZUGSS2/ZUG2
Master light control switch	•
Four-point leveling system	•
Adjustable door stop (90°/130°)	•
Steel toekick color	Stainless steel Black
115 Volts/20 Amps	•
Overall dimensions (WxHxD in inches)	36 x 84 x 23-7/8
Approx. shipping weight (lbs.)	675
Full warranty†	2-year
Full warranty on sealed refrigeration system†	5-year
Limited warranty on sealed system parts†	12-year
Limited warranty on full-extension slides†	Lifetime
	*Door panels required. Accepts 1/4" framed panels or 3/4" overlay panels. Refer to page 24 for customization options. †See written warranty for details.



36" Built-in all-refrigerators and all-freezers

	ZIRS36NMRH ZIRS36NMLH ZIR36NMRH* ZIR36NMLH*	ZIFS36NMRH ZIFS36NMLH ZIF36NMRH* ZIF36NMLH*
Description	36" built-in all-refrigerator	36" built-in all-freezer
Capacity		
Total (cu. ft.)	21.9	21.9
Interior		
Spillproof glass shelves	6 adj./1 full-width fixed	
Sealed snack pans with full-extension slides	2 regular	
Adjustable-humidity produce pans with easy-access lids and full-extension slides	2 extra-large	
Wine caddy	•	
Wire shelves		5 adj./1 fixed/1 full-width fixed
Wire baskets with full-extension slides	2 regular, 4 large	2 regular, 4 large
Wire baskets with easy-access lids and full-extension slides	2 extra-large	2 extra-large
Door interior		
Door bins	4	8
Gallon door bins	2	2
Sealed dairy compartment	2	
Egg bin	•	
Glass-covered butter dish	•	
General features		
ENERGY STAR-qualified	•	
Sealed system design	Automatic cycle defrost	Automatic defrost
Unified grille kit for side-by-side installation	ZUGSS/ZUG75	ZUGSS/ZUG75
Four adjustable rollers	•	•
Four-point leveling system	•	•
130° door stop	•	•
Stainless steel tubular handle	Stainless steel - wrapped models only	Stainless steel - wrapped models only
Coil-free back	•	•
Automatic icemaker		•
115 Volts/20 Amps	•	•
Overall dimensions† (WxHxD in inches)	36 x 84 x 24-3/4	36 x 84 x 24-3/4
Approx. shipping weight (lbs.)	675	675
Full warranty††	2-year	2-year
Full warranty on sealed refrigeration system††	5-year	5-year
Limited warranty on sealed system parts††	12-year	12-year
Limited warranty on full-extension slides††	Lifetime	Lifetime

***Door panels required. Refer to page 24 for customization options.**
†Depth can include 3/4" custom panel.
††See written warranty for details.



For kosher kitchens, an optional Star-K-certified kit allows Monogram bottom-freezer refrigerators to operate in Sabbath mode.



Stainless steel-wrapped free-standing refrigerators

	ZFSB26DRSS	ZFSB23DRSS
Description		
	Free-standing side-by-side refrigerator	Free-standing counter-depth side-by-side refrigerator
Capacity		
Total (cu. ft.)	25.5	22.6
Fresh food (cu. ft.)	16.0	14.4
Freezer (cu. ft.)	9.5	8.2
Fresh food section		
Upfront electronic controls with digital readouts	•	•
Tri-level light system	•	•
Multi-shelf air management tower	•	•
Clear bins and pans	•	•
Climate-control drawer w/express chill, express thaw, select temp	•	•
Sealed adjustable-humidity produce pan	•	•
Sealed deli pan	•	•
Adjustable spillproof glass shelves	3	3
Adjustable door bins	5	5
Gallon door storage	•	•
Dairy compartment	•	•
Covered butter dish	•	•
Wine caddy	•	•
Freezer section		
Interior light	•	•
Utility baskets	3 (2 full-extend)	3 (2 full-extend)
Adjustable wire shelves	2 (1 slide-out)	2 (1 slide-out)
Slide-out can rack	•	•
Tilt-out wire door bins	3 (2 adjustable)	3 (2 adjustable)
Integrated Ice™ system	•	•
General features		
ENERGY STAR-qualified	•	•
Counter-depth design		24"-deep cabinet
Stainless steel tubular handle	•	•
Color appearance	Stainless steel wrap	Stainless steel wrap
Electronic dispenser controls	•	•
Extra-tall dispenser w/cubes, crushed ice and chilled water	•	•
GE SmartWater filtration system for water and ice	•	•
Concealed door hinge	•	•
115 Volts/20 Amps	•	•
Overall dimensions (WxHxD in inches)	36 x 72 x 34 (including handles)	36 x 72 x 29.5 (including handles)
Approx. shipping weight (lbs.)	490	490
Full warranty*	1-year	1-year
Limited warranty on sealed refrigeration system*	5-year	5-year
Limited warranty on full-extension slides*	Lifetime	Lifetime

*See written warranty for details.



Refrigeration Modules

The true artist finds inspiration in even the smallest objects. To see the creative potential of Monogram® refrigeration modules, simply turn the page.



Wine Reserve and Beverage Center with privacy glass
ZDWT240PBS and ZDBT240PBS



Bar Refrigerator with Ice maker ZIBI240PII



Outdoor/Indoor Refrigerator ZDOD240PSS

Above left. Beautifully demonstrating the power of illusion, the new Monogram wine reserve and beverage center feature a privacy-glass door that goes from translucent to transparent at the press of a button. **Above center.** A compact refrigerator and icemaker all in one, the Monogram bar refrigerator stores and chills everything from appetizers to drink mixers. **Above right.** The Monogram outdoor/indoor refrigerator's professional-grade stainless steel exterior stands up to the most demanding environmental conditions. **Far right.** The Monogram double-drawer refrigerator provides convenient storage with full-extension upper and lower drawers that slide out independently of one another for easy loading and unloading.



Double-Drawer Refrigerator ZIDS240PSS



Two Double-Drawer Refrigerators ZIDS240PSS



Fresh-Food Refrigerator ZIF1240PII

Double-Drawer Refrigerator



ZIDS240PSS Stainless steel



ZIDI240PII Custom panel



General Features

Temperature control. Digital touch controls maintain a consistent temperature for the upper and lower drawers, and an LED display allows you to monitor the temperature at a glance.

Storage convenience. A fold-down shelf, adjustable dividers and removable bottom-drawer bin maximize storage space and flexibility, allowing room for everything from whole melons to large turkeys. The top drawer can hold up to 72 twelve-ounce cans, and the bottom drawer has room for eight two-liter bottles.

Interior lighting. Brilliant full-width LED lighting in both drawers puts contents into clear view.

Flush installation. The built-in configuration allows near-seamless integration with surrounding cabinetry. Model ZIDI240PII accepts custom 3/4" panels and handles for a personalized look.

Fresh-Food Refrigerator



ZIFS240PSS Stainless steel



ZIFI240PII Custom panel



General Features

Temperature control. Digital touch controls offer a range of temperatures for precise chilling of a variety of fresh foods and beverages, and an LED display allows easy viewing of temperatures.

Storage convenience. Removable, spillproof glass shelves, along with a QuickSpace™ shelf and a clear Lexan® crisper on full-extension slides, provide easy access to contents.

Flexible installation. The free-standing fresh-food refrigerator stands beautifully on its own, or may be built into cabinetry. Model ZIFI240PII accepts a custom 3/4" panel and handle for a personalized look.



Bar Refrigerator with icemaker ZIB240PII



Outdoor/Indoor Refrigerator ZDOD240PSS



Bar Refrigerator with Icemaker



ZIBS240PSS Stainless steel



ZIBI240PII Custom panel



General Features

Automatic icemaker. Self-contained icemaker features a removable ice bin on full-extension slides and a heavy-duty ice scoop for serving convenience.

Temperature control. Digital touch controls allow a range of temperature settings for different cooling needs, and an LED display makes settings clearly visible.

Storage convenience. Beverage shelf on full-extension slides holds up to five wine bottles or ten 12-ounce cans, while spillproof glass shelves provide ample space for fresh foods and beverages.

Flexible installation. The free-standing bar refrigerator stands beautifully on its own, or may be built into cabinetry. Model ZIBI240PII accepts a custom 3/4" panel and handle for a personalized look.

Outdoor/Indoor Refrigerator



ZDOD240PSS Stainless steel



General Features

Outdoor design. Sturdy, professional-grade stainless steel exterior stands up to the most demanding environmental conditions.

Temperature control. Digital touch controls help keep foods fresh, regardless of outdoor temperatures.

Storage convenience. Two removable glass shelves, along with a QuickSpace™ shelf and two full-extension beverage shelves, allow flexible storage of fresh foods, drinks and condiments.

Door lock. Helps prevent unwanted access, ensuring the door remains closed.

Flexible installation. Finished on all sides in stainless steel, the outdoor/indoor refrigerator allows a wide range of installation possibilities outside and inside your home. For added flexibility, the top panel can be easily removed to allow built-in installation.



Two Wine Reserves ZDWR240PBS



Beverage Center ZDBC240NBS



Beverage Center ZDBR240PBS and Bar Refrigerator with Icemaker ZIBS240PSS

Wine Reserve



ZDWT240PBS Wine Reserve with privacy glass



ZDWR240PBS Wine Reserve with digital control



ZDWC240NBS Wine Chiller with dial control



Digital controls and LED display



Adjustable dial control

Wine Reserve with Privacy Glass

Privacy glass. Innovative liquid-crystal technology allows you to turn glass from translucent to transparent with a simple press of a button. Opaque setting conceals contents from view.

Wine Reserve with Digital Control

Temperature control. Digital touch controls allow you to select precise temperature settings, which are essential for proper wine storage.

Storage convenience. Full-extension sliding racks store up to 57 wine bottles and keep them close at hand.

Flexible installation. The free-standing wine reserve may be built into cabinetry, and the door swing is easily reversed as needed.

Wine Chiller with Dial Control

Temperature control. Adjustable thermostat can maintain the ideal temperature for aging or serving, with a temperature range from the mid-40s to mid-60s Fahrenheit.

Storage convenience. Full-extension sliding racks store up to 57 wine bottles and keep them close at hand.

Flexible installation. The free-standing wine chiller may be built into cabinetry, and the door swing is easily reversed as needed.

Beverage Center



ZDBT240PBS Beverage Center with privacy glass



ZDBR240PBS Beverage Center with digital control



ZDBC240NBS Beverage Center with dial control



Digital controls and LED display



Adjustable dial control

Beverage Center with Privacy Glass

Privacy glass. Innovative liquid-crystal technology allows you to turn glass from translucent to transparent with a simple press of a button. Opaque setting conceals contents from view.

Beverage Center with Digital Controls

Temperature control. Digital touch controls provide precise temperature settings for cooling of all types of beverages.

Storage convenience. Three removable glass shelves, including a QuickSpace™ shelf, and two full-extension wine racks hold up to 10 wine bottles, as well as 12-ounce cans, quart-size bottles, and two-liter plastic containers.

Flexible installation. The free-standing beverage center may be built into cabinetry, and the door swing is easily reversed as needed.

Beverage Center with Dial Control

Temperature control. A range of temperature settings allows you to maintain the ideal climate for your beverages of choice.

Storage convenience. Three removable, spillproof glass shelves and two full-extension wine racks hold up to 12 wine bottles, as well as 12-ounce cans, quart-size bottles and two-liter plastic containers.

Flexible installation. The free-standing beverage center may be built into cabinetry, and the door swing is easily reversed as needed.



Double-drawer refrigerator

	ZIDI240PII* ZIDS240PSS
Description	24" refrigerated drawers
Performance	
Total capacity	5.0 cu. ft.
Defrost type	No frost
Convenience	
Electronic adjustable temperature control	•
Digital temperature readout (°F)	•
2 full-extension drawers with heavy-duty slides	Fresh food
Fold-down shelf	Top drawer
Movable vertical divider	Top drawer
Movable horizontal divider	Top drawer
Removable bin	Bottom drawer
Interior LED light	Each drawer
Appearance	
Case color	White
Drawer color	Custom panel stainless steel
Toekick color	Black** Stainless steel
Handle	Custom handle required Stainless steel tubular
Accepts 3/4" custom panels	ZIDI240PII only
Accepts 3/4" custom handles	ZIDI240PII only
General features	
Installation options	Built-in
Flush installation	•
Leveling legs	•
Sealed system design	Condenser/evaporator
Overall dimensions† (WxHxD in inches)	23-3/4 x 34-1/2 x 23-3/4
Amps @ 120 Volts	15
Full warranty††	1- and 5-year full
	*Requires custom panel. **Black installed, stainless included. †Height excluding legs, including hinge, depth excluding handle. ††See written warranty for details.



Fresh-food refrigerator

	ZIFI240PII* ZIFS240PSS
Description	24" fresh-food refrigerator
Performance	
Total capacity	5.4 cu. ft.
Defrost type	Cycle defrost
Convenience	
Electronic adjustable temperature control	•
Removable spillproof glass shelves	2 full-size, 1 QuickSpace™
Vegetable drawer with full-extension slides	•
Interior light	•
Appearance	
Single door	Right-hinged only
Case color	Black
Toekick color	Black** Stainless steel
Handle	Custom handle required Stainless steel tubular
Accepts 3/4" custom panels	ZIFI240PII only
Accepts 3/4" custom handles	ZIFI240PII only
General features	
Installation options	Built-in or free-standing
Leveling legs	•
Sealed system design	Condenser/evaporator
110° door stop	•
Overall dimensions† (WxHxD in inches)	23-3/4 x 34-1/2 x 23-3/4
Amps @ 120 Volts	15
Full warranty††	1- and 5-year full
	*Requires custom panel. **Black installed, stainless included. †Height excluding legs, including hinge, depth excluding handle. ††See written warranty for details.



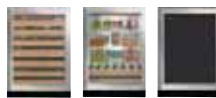
Bar refrigerator with icemaker

	ZIBI240PII* ZIBS240PSS
Description	24" bar refrigerator with icemaker
Performance	
Total capacity	4.25 cu. ft.
Icemaker w/pull-out bin	•
Defrost type	No frost
Convenience	
Electronic adjustable temperature control	•
Encapsulated spillproof glass shelves	1 full-size, 2 half-size
Wine/bottle shelf with full-extension slides and cherry wood front	1 half-size
Ice scoop	•
Interior light	•
Appearance	
Single door	Right-hinged only
Case color	Black
Toekick color	Black** Stainless steel
Handle	Custom handle required Stainless steel tubular
Accepts 3/4" custom panels	ZIBI240PII only
Accepts 3/4" custom handles	ZIBI240PII only
General features	
Installation options	Built-in or free-standing
Flush installation	•
Leveling legs	•
Sealed system design	Condenser/evaporator
110° door stop	•
Overall dimensions† (WxHxD in inches)	23-3/4 x 34-1/2 x 23-3/4
Amps @ 120 Volts	15
Full warranty††	1- and 5-year full
	*Requires custom panel. **Black installed, stainless included. †Height excluding legs, including hinge, depth excluding handle. ††See written warranty for details.



Outdoor/indoor refrigerator

	ZDOD240PSS
Description	24" undercounter outdoor/indoor refrigerator
Performance	
Total capacity	5.4 cu. ft.
Outdoor temperature performance	45°F (7.2°C) - 120°F (38°C)
Interior temperature range	34°F - 40°F
Defrost type	Auto cycle defrost
Convenience	
Digital temperature readout (°F)	•
Adjustable cold control	Upfront, recessed
Removable spillproof glass shelves	2 full-size, 1 QuickSpace
Beverage shelves with full-extension slides	2 half-size
Interior light	•
Appearance	
Single door	Right-hinged only
Door and case color	Full stainless steel wrap
Toekick color	Stainless steel
Stainless steel professional-style handle	•
General features	
Installation options	Built-in or free-standing
Removable stainless steel top cap for built-in capability	•
Leveling legs	4, 2 fixed
Sealed system design	Condenser/evaporator
Lock and key	•
Vinyl cover, Stainless Steel	•
Magic and polishing cloth	•
110° door stop	•
Cabinet/door insulation	Foam
Overall dimensions* (WxHxD in inches)	23-15/32 x 34-1/2 x 23-5/32
Outdoor UL qualified	•
Full warranty**	1- and 5-year full
	*Height includes fully-retracted support legs and door hinge. **See written warranty for details.



Wine reserves and beverage centers

	ZDWC240NBS	ZDWT240PBS ZDWR240PBS	ZDBC240NBS	ZDBT240PBS ZDBR240PBS
Description	Wine chiller	Wine reserve with digital control	Beverage center	Beverage center with digital control
Performance				
Total capacity	57 wine bottles	57 wine bottles	12 wine bottles plus 126 12-oz. cans or total of 150 12-oz. cans	10 wine bottles plus 126 12-oz. cans or total of 146 12-oz. cans
Removable spillproof glass shelves			3 full-size	2 full-size, 1 QuickSpace
Wine racks with full-extension slides	5 full-size/ 2 half-size	5 full-size/ 2 half-size	2 half-size	2 half-size
Convenience				
Red or white wine temperature setting	•	•		
Adjustable temperature control	•	•	•	•
Interior light on/off switch	•	•	•	•
Appearance				
Privacy glass		ZDWT-model		ZDBT-model
Reversible door hinges	•	ZDWR-model	•	ZDBR-model
Door color appearance	Stainless steel-framed	Stainless steel-framed	Stainless steel-framed	Stainless steel-framed
Case color	Black	Black	Black	Black
Toekick color	Black* Stainless steel	Black* Stainless steel	Black* Stainless steel	Black* Stainless steel
Stainless steel tubular handle	•	•	•	•
Tempered, glass door	Tinted, UV-resistant	Liquid crystal Tinted, UV-resistant	Tinted, UV-resistant	Liquid crystal Tinted, UV-resistant
Unfinished cherry-wood shelf fronts	7	7	2	2
General features				
Installation options	Built-in or free-standing	Built-in or free-standing	Built-in or free-standing	Built-in or free-standing
Overall dimensions* (WxHxD in inches)	23-3/4 x 34-1/2 x 23-3/4	23-3/4 x 34-1/2 x 23-3/4	23-3/4 x 34-1/2 x 23-3/4	23-3/4 x 34-1/2 x 23-3/4
Amps @ 120 Volts	15	15	15	15
Full warranty†	1-year	1-year	1-year	1-year
Full warranty† sealed refrigeration system	5-year full	5-year full	5-year full	5-year full

*Black installed, stainless included.

**Height excluding legs, including hinge, depth excluding handle.

†See written warranty for details.



Icemaker ZDI15CBB

Icemakers



ZDI15CSS
Stainless steel
automatic icemaker



ZDI15CWW
White automatic
icemaker



ZDI15CBB
Black automatic
icemaker

General Features

High production, large capacity. The icemaker produces up to 50 pounds of clear ice per day and automatically shuts off when the 25 pound-capacity bin is full.

Customization. The 15" icemaker door accepts a 3/4" custom panel to match surrounding cabinetry. You can also add your own custom handle.



Compactors ZCG3100VBB

Compactors



ZCG3500DSS
Stainless steel
compactor



ZCG3300VWW
White compactor



ZCG3100VBB
Black compactor

General Features

Twelve-inch width. The slim design conserves space and permits attractive integration into kitchen décor or cabinetry of other rooms in the home.

Powerful pressure. Up to 5000 pounds of compressive force reduce trash volume by 75 percent, allowing easy transport and disposal.

Safe operation. A removable key locks the compactor, starts operation, and assures the drawer remains locked during use.

Customization. Choose door panels in stainless steel, white or black (the black panel reverses to white, and the white panel reverses to black). The drawer also accepts 1/4" or 3/4" overlay panel and custom handle.



Ice makers

	ZDIS15CSS	ZDI15CWW ZDI15CBB
Performance		
Daily ice production	50 lbs.	50 lbs.
Storage bin	25 lbs.	25 lbs.
Convenience		
Automatic shut-off	•	•
Ice scoop	•	•
Interior light	•	•
Electronic control with pushpads	•	•
Cycles	On/off/clean	On/off/clean
Clean light	•	•
Appearance		
Colors	Stainless steel	White Black
Full-length door	•	•
Handle	Stainless steel tubular	White Black
Accepts 3/4" custom panels*		ZIP75WW ZIP75BB
Reversible door	•	•
100° door stop	•	•
General features		
Overall dimensions (WxHxD in inches)	14-13/16 x 34-34-1/2 x 23-5/16	14-13/16 x 34-34-1/2 x 23-5/16
Amps @ 115 Volts	5.3	5.3
Drain pump accessory kit	ZPK1	ZPK1
Approx. shipping weight (lbs.)	110	110
Full warranty**	1-year	1-year
Full warranty** sealed refrigeration system	5-year	5-year
	*Does not fit flush with surrounding cabinetry. **See written warranty for details.	



Compactors

	ZCG3500DSS	ZCG3300VWW ZCG3100VBB
Performance		
1/3-hp motor	•	•
Maximum compacting force	5000 lb.	5000 lb.
Automatic anti-jamming feature	•	•
Convenience		
Slide-out compactor drawer	•	•
Lock/start control with removable key	•	•
Appearance		
Colors available	Stainless steel	White Black
White/black reversible drawer panel		•
Adjustable base (toekick depth)	•	•
Drawer trim accepts 1/4" custom panel		•
Accepts 3/4" custom panel		•
General features		
Overall dimensions (WxHxD in inches)	12 x 34-35 x 20-1/4	12 x 34-35 x 20-1/4
Amps @ 120 Volts	5.0	5.0
Approx. shipping weight (lbs.)	135	135
Full warranty*	1-year	1-year
	*See written warranty for details.	



Dishwashers

Like exquisitely crafted flatware or pristine bone china, Monogram® dishwashers artfully demonstrate the beauty in utility. On these pages, you have the opportunity to discover that beauty and use it as inspiration for a truly distinctive kitchen.



Two Fully Integrated Dishwashers ZBD6890KII



Fully Integrated Dishwasher ZBD6800KBB

Above left. Hidden, top-mount controls and custom wood panels allow Monogram integrated dishwashers to blend in beautifully with surrounding cabinetry. **Above right.** A solid-black dishwasher lends drama and contrast to light-wood cabinetry. **Far right.** The Monogram fully integrated dishwasher with xenon lighting creates a sleek, modern impression in stainless steel.



Fully Integrated Dishwasher ZBD0710KSS



Two dishwashers ZBD6880KSS



ZBDO700KII Dishwasher with ZPRO0700S Professional Panel



Fully Integrated Dishwashers with Xenon Lighting



ZBD0710KSS Xenon-light stainless steel dishwasher with end-of-cycle indicator light



ZBD0700KII Xenon-light dishwasher with custom wood panel & handle (which can be ordered from your cabinetmaker)



ZBD0700KII Xenon-light dishwasher with stainless professional panel ZPRO0700S

General Features

Seamless style. The fully integrated design with concealed, top-mounted controls installs nearly flush with surrounding cabinetry for a dramatic, yet understated, effect.

Ultraquiet operation. A quiet-engineered motor, extra-thick insulation and special sound-absorbing materials virtually eliminate the sound of washing dishes.

Brilliant interior lighting. Used in headlights of high-performance automobiles, xenon technology provides superior light quality and brightness. Plus, it lasts longer than conventional bulbs.

End-of-cycle indicator. Discreet lighting on the outside of the dishwasher lets you know when the cycle is complete and your dishes are clean and dry. (ZBD0710KSS only)

Powerful, forced-air drying system. A fan-assisted, vented drying system extracts moist, warm air. Dishes come out dry, ready for the table or shelf.

Complete cleaning coverage. Three direct-feed wash arms and six wash levels assure that every dish and utensil is sparkling clean. A three-stage filter system helps prevent food soils from being redeposited on dishes.

Extra-tall tub with towerless rack system. The generously sized interior provides the space and loading flexibility necessary to accommodate 16 place settings, with no wash tower to get in the way. The upper rack moves up, down and diagonally in one-inch increments, allowing maximal use of space above and below the rack.



High-intensity xenon lights illuminate the entire dishwasher interior, leaving no question as to whether or not dishes have been cleaned.

Fully Integrated Dishwashers



ZBD6880KSS
Stainless steel dishwasher



ZBD6800KBB
Black dishwasher



ZBD6800KWW
White dishwasher



ZBD6890KII
Dishwasher with custom wood panel and handle (which can be ordered from your cabinetmaker)



ZBD6890KII
Dishwasher with stainless professional panel ZPRO0700S

General Features

Seamless style. The fully integrated design with concealed, top-mounted controls installs nearly flush with surrounding cabinetry for a dramatic, yet understated, effect.

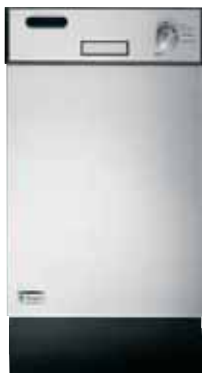
Ultraquiet operation. A quiet-engineered motor, extra-thick insulation and special sound-absorbing materials virtually eliminate the sound of washing dishes.

Complete cleaning coverage. Three direct-feed wash arms and six wash levels assure that every dish and utensil is sparkling clean. A three-stage filter system helps prevent food soils from being redeposited on dishes.

Extra-tall tub with towerless rack system. The generously sized interior provides the space and loading flexibility necessary to accommodate 16 place settings, with no wash tower to get in the way. The upper rack moves up, down and diagonally in one-inch increments, allowing maximal use of space above and below the rack.

Powerful, forced-air drying system. A fan-assisted, vented drying system extracts moist, warm air. Dishes come out dry, ready for the table or shelf.

18" Dishwasher



ZBD1800GSS
Stainless steel dishwasher



General Features

ADA-compliant. The compact configuration can be installed at a height that allows easy access.

Easy-to-use controls. The mechanical dial turns easily to the desired wash cycle: heavy wash, normal wash, light wash, china, crystal or rinse only.

Dual-motor, dual-wash-arm system. Two motors and wash arms provide effective, yet quiet, cleaning power.

Nylon-coated racks. Durable racks provide plenty of space and loading flexibility. Lower rack includes a stem-safe shelf for odd-shaped items and delicate stemware.



Dishwashers

	ZBD0710KSS	ZBD0700KII	ZBD6880KSS ZBD6800KWW ZBD6800KBB	ZBD6890KII	ZBD1800GSS
Description	Fully integrated dishwasher	Fully integrated dishwasher	Fully integrated dishwasher	Fully integrated dishwasher	18" built-in dishwasher
Variable cycles and options					
Antibacterial, cookware, normal, speed, china, crystal, glasses, plastics, rinse only		•		•	
Antibacterial, cookware, normal, china, crystal, rinse only	•		•		
Heavy, normal, light wash, china, crystal, rinse only					•
Speedcycle				•	
Dry option	Heated dry	Heated dry	Heated dry	Heated dry	
Extraclean sensor	•	•	•	•	
Delay start option	2/4/8-hour	24-hour	2/4/8-hour	24-hour	
End-of-cycle indicator light	•				
Features					
NSF-certified to sanitize	•	•	•	•	
ENERGY STAR®-qualified	•	•	•	•	•
Interior lights	2 xenon	2 xenon			
Electronic top controls	•	•	•	•	
Surgical-grade stainless steel interior	•	•	•	•	•
Nylon adjustable upper rack	Fold-down tines	Fold-down tines	Fold-down tines	Fold-down tines	
Nylon lower rack fold-down tines	Full	Full	2 rows	Full	
Silverware basket w/cell covers	•	•	•	•	•
Wash levels	6	6	5	5	2
Three wash arms	•	•	•	•	
Filter system	3-stage	3-stage	3-stage	3-stage	Dual
Adjustable rinse aid dispenser	•	•	•	•	•
Hard food disposer	Piranha™	Piranha	Piranha	Piranha	
Quiet features					
Quiet system	Quiet Power VI	Quiet Power VI	Quiet Power VI	Quiet Power VI	Quiet 1800
Bitumen tub wrap	Thinstall™	Thinstall	Thinstall	Thinstall	•
Appearance					
Door panel color	Stainless steel	Customer-supplied custom panel, custom handle	Stainless steel White Black	Customer-supplied custom panel, custom handle	Stainless steel
Accepts 3/4" custom panel/custom handle		Customer-supplied		Customer-supplied	
Accepts professional-style stainless steel door panel		ZPRO0700S		ZPRO0700S	
General features					
Overall dimensions (WxHxD in inches)	24 x 34-35 x 24	With panel 24 x 34-35 x 24-3/4	24 x 34-35 x 24	With panel 24 x 34-35 x 24-3/4	17-1/2 x 34-35 x 22-1/2
Amps @ 120 Volts	9.1	9.1	9.1	9.1	12.0
Approx. shipping weight (lbs.)	122	117	120	115	60
Full warranty*	1-year	1-year	1-year	1-year	1-year
Limited warranty* on parts	2-year	2-year	2-year	2-year	
Limited warranty* on upper and lower racks	5-year	5-year	5-year	5-year	
Limited warranty* on electronic control module	5-year	5-year	5-year	5-year	
Full warranty* on tub and door liner	Lifetime	Lifetime	Lifetime	Lifetime	

*See written warranty for details.



DISHWASHERS



All full-size Monogram® dishwashers are NSF-certified to reduce 99.999% of bacteria.



As an ENERGY STAR® partner, GE has determined that all Monogram dishwashers meet the ENERGY STAR guidelines for energy efficiency.



Gas and Electric Cooktops

In art, as in life, it's the simple things that make all the difference. The sleek simplicity of Monogram® cooktops transforms your kitchen into the ideal setting for creative expression.



Above left. The simple, refined elegance of the Monogram electric cooktop pairs beautifully with a Monogram stainless steel hood. **Above center.** The Monogram gas on glass cooktop combines the cooking performance of gas with the ultimate cleanability of glass. **Above right.** The Monogram digital electronic cooktop is smooth from edge to edge for a sophisticated look that's easy to clean. **Far right.** With its stacked, dual-flame burners and series of interlocking grates, the Monogram stainless steel gas cooktop creates an immediate impression of culinary expertise.

Stainless Steel Island Hood ZV950SDSS
Gas Cooktop ZGU375NSDSS



COOKTOPS

Hood ZV800SJSS and Gas Cooktop ZGU375NSDSS



Gas Cooktops

Stainless Steel Gas Cooktop



ZGU375NSDSS (natural gas)
ZGU375LSDSS (liquid propane)
36" stainless steel gas cooktop



General Features

Sophisticated design. The graceful front edge forms a subtle arc, and the burner grates are uniquely configured to convey a sophisticated look.

Silent, precise simmering. The simmer flame silently delivers a consistent 140°F temperature, without cycling on and off. No simmer plate required.

60,000 BTUs of cooking power. The cooktop is equipped with one 15,000-BTU burner, two 12,000-BTU burners and two 10,500-BTU burners.

Continuous grates. The graceful composition of curves and tapered points is further enhanced with an interlocking design that creates a stable surface for easy pot movement.

Intuitive, easy-to-use controls. There is an "on" indicator light on the bezel of each knob, and the tactile surface makes them easy to grip and turn. Controls are clustered at front and center for added convenience.

Gas on Glass Cooktop



ZGU36KSKSS 36" black, gas on glass cooktop with stainless steel trim



ZGU36KWKWW 36" white, gas on glass cooktop



ZGU36KBKBB 36" black, gas on glass cooktop

General Features

Sophisticated design. The front edge is slightly curved to form an attractive, soft arc that complements other Monogram® appliances.

Precise, versatile temperature control. Five burners provide a range of heat intensities: one 15,000-BTU burner, one 11,000-BTU burner, one 9100-BTU burner and two 6000-BTU burners.

Continuous grates. Heavy pots are easy to slide from burner to burner.

Soft-touch control knobs. Tactile knobs are pleasing to the touch and eye.



COOKTOPS

Electric Cooktops

Digital Electronic Cooktops



ZEU36RSFSS 36" black digital cooktop with stainless steel trim



ZEU36RBFBB 36" black digital cooktop



ZEU30RSFSS 30" black digital cooktop with stainless steel trim



ZEU30RBFBB 30" black digital cooktop

General Features

Sophisticated styling. Flat plane of smooth ceramic glass provides a seamless cooking surface.

Rapid Hi/Lo burner cools down up to three times faster than a standard electronic burner. Rapid reduction in heat helps prevent sauces from boiling over or burning.

Dual elements. Radiant heating elements with responsive sensors accommodate small to large pans for enhanced cooking flexibility and performance.

Full-function warmer. Positioned at center on 36" models and right rear on 30" models, the convenient warmer offers three warm settings, in addition to the 11 standard heat settings.

Electric Cooktops



ZEU36KSKSS 36" solid black electric cooktop with stainless steel accents, bridge and triple-ring burners



ZEU36KWKWW 36" solid white electric cooktop with bridge and triple-ring burners



ZEU36KBKBB 36" solid black electric cooktop with bridge and triple-ring burners

General Features

Sophisticated styling. The flush, frameless design offers a stunning look of sleek simplicity, and the surface is completely solid for a dramatic "true black" or "true white" appearance.

Cooking versatility. Elements vary from 6" to 12" in diameter and can be expanded to suit your cooking needs.

Expandable elements. Triple-ring and bridge elements allow you to create larger heating zones to match your cooking needs.

Cooking performance. Responsive ribbon elements allow you to simmer and sauté precisely according to recipe. An infinite range of heat settings leaves plenty of room for improvisation.





Gas cooktops

	ZGU375NSDSS ZGU375LSDSS	ZGU36KSKSS ZGU36KWKWW ZGU36KBKBB
Description	36" stainless steel gas cooktop	36" gas on glass cooktop
Performance		
Sealed burners	5	5
Dual-flame stacked burners	5	
140°F simmer burners	5	
Electronic pilotless ignition	•	•
Auto reignition	•	
Convenience		
Cooktop surface	304 Stainless steel	Ceramic
Cast-iron, porcelain-enameled burner grates	•	•
Continuous interlocking grates	•	•
Front-mounted center controls	•	•
Tactile-grip knobs	•	•
Burner "on" indicator lights	5	•
Appearance		
Color appearance	Stainless steel	Black (Stainless steel trim), White, Black
General features		
High-altitude kit*	WB49X10090	
Overall dimensions (WxHxD in inches)	36-1/2 x 5-1/2 x 20-5/8	36 x 3-1/16 x 21-7/16-SS 36 x 3-1/16 x 21-1/4-B,W
Burners (000's BTUs) Nat/LP gas	(2) 10.5/8.5 (2) 12/8.5 (1) 15/15	(2) 6/6 (1) 9.1/8.1 (1) 11/10 (1) 15/13
Amps @ 120VAC	5.0	5.0
Approx. shipping weight (lbs.)	78	59
Full warranty†	1-year	1-year
	*Must be installed by a qualified service technician. †See written warranty for details.	



Electric cooktops

	ZEU36RSFSS ZEU36RBFBB	ZEU30RSFSS ZEU30RBFBB	ZEU36KSKSS ZEU36KWKWW ZEU36KBKBB
Description	36" digital electronic cooktop	30" digital electronic cooktop	36" ribbon electric cooktop
Performance			
Elements	5	4	5
7" heating element	1 ribbon (1500W)	1 ribbon (1500W)	2 ribbon (1800W)
Bridge element (links 7" elements)			1 ribbon (800W)
6" heating elements	2 ribbon (1200W)	1 ribbon (1200W)	2 ribbon (1200W)
Tri 6"/9"/12" heating element			1 ribbon (1050/1950/3000W)
Dual 6"/9" heating element	1 ribbon (1000/2500W)	1 ribbon (1000/2500W)	
Dual 5"/8" heating element	1 ribbon (1000/2200W)	1 ribbon (1000/2200W)	
Full-function warmer burner	•	•	
Convenience			
Rapid Hi/Lo burners	•	•	
Burner controls	Electronic touch	Electronic touch	Stainless steel knobs White painted knobs Black painted knobs
Pan presence sensor	•	•	
Pan size sensor	•	•	
Kitchen timer	•	•	
Control lock capability	•	•	
Hot surface indicator lights	•	•	•
Appearance			
Ceramic glass surface	Patterned	Patterned	Solid Color
Frameless glass design	•	•	•
Color appearance	Black (Stainless steel trim) Black	Black (Stainless steel trim) Black	Black (Stainless steel accents) Solid white Solid black
General features			
Overall dimensions (WxHxD in inches)	36 (36-1/8 SS) x 6-1/4 x 21-1/8 (21-1/4 SS)	29-3/4 (29-7/8 SS) x 6-1/4 x 21-5/8 (21-3/4 SS)	36 (36-1/8 SS) x 3-1/4 x 21-1/8 (21-1/4 SS)
KW rating @240VAC	8.6	7.4	9.8
	208VAC	6.5	7.4
Amps @240VAC	35.8	30.8	40.8
	208VAC	31.3	26.9
Approx. shipping weight (lbs.)	56	43	45
Full warranty*	1-year	1-year	1-year
Limited elements and glass surface warranty*	5-year	5-year	5-year

*See written warranty for details.



COOKTOPS



Built-In Cooking Products

Creativity, at its essence, is a balance of artistry and imagination. Monogram® built-in cooking products strike the perfect balance, inspiring new possibilities for your kitchen and life.



Professional Double Oven ZET1058PFSS



Advantium ZSC2001FSS
Single Convection Oven ZET938SFSS
Warming Drawer ZTD910SFSS



Advantium 120 ZSC1001KSS
warming Drawer ZKD9105SFSS

Above left. Stunning to behold, the unique design of the Monogram professional double-oven combines rugged stainless steel construction with refined, sophisticated styling. **Above center.** The Monogram electronic wall oven coordinates perfectly with the Advantium® oven and warming drawer. **Above right.** The Monogram Advantium 120 oven and warming drawer bring extraordinary style and convenience to the kitchen. **Far right.** For the ultimate in cooking versatility, combine the Monogram Trivection oven with a Monogram Advantium oven and warming drawer.



Advantium Wall Oven ZSC2001FSS
Trivection Wall Oven ZET3038SHSS
Warming Drawer ZTD910SFSS



BUILT-IN COOKING

Wall Ovens with Advantium® Speedcook Technology



ZSC2001FSS Stainless steel built-in oven with Advantium Speedcook technology



ZSC2000FWW White built-in oven with Advantium Speedcook technology



ZSC2000FBB Black built-in oven with Advantium Speedcook technology

General Features

Sophisticated styling. The overall look is sleek. The oven's bold, horizontal lines are set off by simple graphics and a tubular handle on the pull-down door.

Speedcook technology. 4500-watt halogen cooking system uses heat generated from light to rapidly cook the outside of foods, sealing in natural juices. At the same time, heat penetrates the surface, evenly cooking the inside.

Powerful performance. Oven-quality foods cook in up to eight times faster than a conventional oven, with no preheating required.

Easy-to-use controls. The control dial smoothly turns in both directions, making it easy to select from more than 100 preprogrammed recipes. For added convenience, Demo and Help programs guide you through the simple process of choosing a programmed recipe or customizing your own.

Full-function microwave oven. At the touch of a button, the oven converts to a high-performance, sensor-controlled microwave.

Oven-quality results up to 8 times faster!

Compare cooking times with a conventional oven:

Food	Advantium	Conventional
Mushrooms stuffed with spinach	5 minutes	15 minutes
Chicken bites, tarragon-mustard sauce	5 minutes	20 minutes
Steak au poivre	7 minutes	15 minutes
Cornish hens Provençale	13 minutes	60 minutes
Leg of lamb, caper-wine sauce	40 minutes	105 minutes
Chicken breasts with feta-basil filling	14 minutes	35 minutes
Scalloped oysters	11 minutes	25 minutes
Classic lasagna	17 minutes	35 minutes
Vegetable frittata	13 minutes	25 minutes
Apricot-almond scones	5 minutes	10 minutes



Crescent rolls,
4 minutes



Pork tenderloin,
20 minutes



Miniature quiche appetizers,
8 minutes

Wall Ovens with Advantium 120 Speedcook Technology



ZSC1001KSS Stainless steel built-in oven with Advantium 120 Speedcook technology



ZSC1000KBB Black built-in oven with Advantium 120 Speedcook technology

General Features

Sophisticated styling. Clean lines offer a stylish, modern look that coordinates beautifully with other Monogram® built-in cooking products.

Speedcook technology. Halogen-light system speedcooks your favorite foods to delicious perfection—in minutes, with no preheating.

Powerful performance. Oven-quality foods cook up to four times faster than a conventional oven, with no preheating required.

Remarkable versatility. Multiple cooking options create four ovens in one—Speedcook, true European convection, sensor microwave and warming ovens—to bake, boil, brown, roast, warm and proof foods.

Spacious interior. Rounded oven cavity and 16" turntable allow full and continual rotation of a 9" x 13" casserole dish. Removable oven rack offers the convenience of multi-level cooking.

Installation flexibility. Ovens can be installed in a 27" or 30" wall cabinet (with included trim kit).

Oven-quality results up to 4 times faster!

Compare cooking times with a conventional oven:

Food	Advantium 120	Conventional
Lobster tails (two 8oz)	12 minutes	15 minutes
Spinach and artichoke bake	18 minutes	30 minutes + preheat
Cranberry-pecan pie	35 minutes	50 minutes + preheat
Corn and cheese souffle	22 minutes	53 minutes + preheat
Cantonese-roast chicken with honey-hoisin glaze	40 minutes	82 minutes



BUILT-IN COOKING

Electronic Wall Ovens with Trivection™ Technology



ZET3058SHSS 30" stainless steel double oven with Trivection technology



ZET3038SHSS 30" stainless steel single oven with Trivection technology



ZET3058BHBB 30" black, double oven with Trivection technology



ZET3038BHBB 30" black single oven with Trivection technology

General Features

Sophisticated styling. Sleek, modern design provides a striking look with clean lines and smooth, glass touch controls.

Award-winning Trivection technology. Thermal, convection and microwave cooking processes work together to produce the ideal blend of taste and texture. Foods are prepared to delectable perfection—on average up to five times faster than a conventional oven.

Cooking versatility. In addition to Trivection technology, these ovens offer several other cooking methods and modes: baking, broiling, roasting and true European convection, as well as 24-hour delay bake, warm mode and proof mode.

Full-size oven capacity. The spacious oven interior makes room for foods ranging from large roasts to rich, multi-tiered cake pans and everything in between.

Halogen lighting. Two halogen lights illuminate your culinary work in progress.



A trio of heating methods. A triumph of performance.



Thermal heating. Traditional bake and broil elements supply dry heat from above and below food, while helping maintain consistent oven temperature.



Reverse-Air convection. An innovative fan reverses direction for optimal air and heat circulation, allowing even, rapid cooking on every oven rack.



Microwave energy. Electromagnetic waves excite molecules in food and help accelerate the cooking process, ensuring faster cooking speeds.



Certified Sabbath mode allows you to keep cooked foods warm on the Jewish Sabbath and Jewish holidays. (No Sabbath mode in lower oven ZET3058 models)

Electronic Convection Wall Ovens



ZET958SFSS 30" stainless steel double convection oven (shown above)
ZEK958SFSS 27" stainless steel double convection oven (not shown)



ZET938SFSS 30" stainless steel single convection oven (shown above)
ZEK938SFSS 27" stainless steel single convection oven (not shown)



ZET958BFBB 30" black double convection oven (shown above)
ZEK958BFBB 27" black double convection oven (not shown)

ZET938BFBB 30" black single convection oven (shown above)
ZEK938BFBB 27" black single convection oven (not shown)

General Features

Sophisticated styling. Seamless, hand-finished doors and smooth controls offer a look of modern refinement.

Electronic glass touch controls. A gentle touch allows you to easily select the desired cooking function: convection bake or roast, variable or closed-door broiling, 24-hour delay bake, warm mode or proof mode.

Reverse-Air convection. A bi-directional fan delivers exceptionally consistent cooking performance, allowing heated air to circulate on all sides of food.

Self-clean racks. Porcelain-coated racks are designed to be left in the oven during the self-clean cycle for effortless cleaning.

Halogen lighting. Two halogen lights illuminate your culinary work in progress, putting it into bright, clear perspective.

Concealed bake element. A smooth surface simplifies ash removal after the self-clean cycle.



BUILT-IN COOKING



Certified Sabbath mode allows you to keep cooked foods warm on the Jewish Sabbath and Jewish holidays.



Gas Cooktop **ZGU375NSDSS** and Single European Convection Oven **ZET1038SFSS**



Wall Oven with Advantium® Technology **ZSC2001FSS**
 Single Convection Oven **ZET1038PFSS**
 Warming Drawer **ZTD910SFSS**



Professional Double Oven **ZET1058PFSS**

European Convection Wall Ovens



ZET1058SFSS 30" stainless steel double convection oven



ZET1038SFSS 30" stainless steel single convection oven



ZET1058BFBB 30" black double convection oven



ZET1038BFBB 30" black single convection oven

General Features

Sophisticated styling. With its large viewing window and seamless appearance, this oven displays elegance on a grand scale. Hand-milled control knobs punctuate the overall design.

True European convection. A dedicated third heating element in the back wall combines with the convection fan to provide even heat and a consistent temperature throughout the oven.

Self-clean racks. Porcelain-coated racks are designed to be left in the oven during the self-clean cycle for effortless cleaning.

Halogen lighting. Two halogen lights illuminate your culinary work in progress, putting it into bright, clear perspective.

Concealed bake element. A smooth surface simplifies ash removal after the self-clean cycle.

Professional Wall Ovens



ZET1058PFSS 30" stainless steel professional double oven



ZET1038PFSS 30" stainless steel professional single oven



BUILT-IN COOKING

General Features

Professional styling. The appearance conveys a sense of both solidity and beauty with a large handle, heavy die-cast metal controls and chamfered, hand-finished edges.

True European convection. A dedicated third heating element in the back wall combines with the convection fan to provide even heat and a consistent temperature throughout the oven.

Self-clean oven racks. Heavy-duty, porcelain-coated oven racks are designed to remain in the oven during the oven self-clean cycle for effortless cleaning.

Halogen lighting. Two halogen lights illuminate your culinary work in progress, putting it into bright, clear perspective.

Concealed bake element. A smooth surface simplifies ash removal after the self-clean cycle.



**Built-in wall oven with
Advantium® technology**



Single and double Trivection™ ovens

	ZSC2001FSS ZSC2000FWW ZSC2000FBB	ZSC1001KSS ZSC1000KBB
Description	Built-in wall oven	Built-in wall oven
Performance		
Halogen power	4500 watts	500 watts
Microwave power	950 watts	975 watts
Convection		1500 watts
Bake	upper	700 watts
	lower	375 watts
Oven controls		
Electronic scrolling display	•	•
More than 100 preprogrammed menu items	•	•
Help mode	•	•
Demo mode	•	•
Interior oven light	•	•
Beeper sound level control	•	•
Child lock-out	•	•
Microwave oven		
Sensor	•	•
Defrost—auto/time	•	•
Accessories		
Grilling tray	12-1/2", porcelain enamel	
Baking tray	12-1/2", porcelain enamel	16", nonstick
Microwave tray	13", white ceramic	16", clear glass
Aluminum broiling tray		•
2 nd tier baking rack		•
Appearance		
Color appearance	Stainless steel White painted steel Black painted steel	Stainless steel Black painted steel
Stainless steel oven interior	•	•
General features		
Approx. shipping weight (lbs.)	101	100
Overall oven interior dimensions (WxHxD in inches)	18-29/32 x 8-13/32 x 13-19/32	20-1/16 x 8-1/2 x 17
Overall exterior dimensions (WxHxD in inches) (not including handle)	29-25/32 x 21-7/8 x 15-27/32	26 3/4 x 18-5/8 x 21-1/2 without trim 29-3/4 x 18-5/8 x 21-1/2 without trim
Oven cabinet width required	30"	27" or 30" with supplied trim
Amps	@240VAC 208VAC 120VAC	30 30 15
Input volt/hertz		120/60
Input amps/watts (max.)		15/1800
Full warranty*	1-year	1-year
Full halogen lamp warranty*	10-year	10-year
Limited magnetron warranty*	10-year	10-year

*See written warranty for details.

	ZET3038SHSS ZET3038BHBB	ZET3058SHSS ZET3058BHBB
Description	30" single oven	30" double oven
Performance		
Self-cleaning oven(s)	•	Upper and lower
Oven capacity	4.3 cu. ft.	4.3 cu. ft. upper 4.4 cu. ft. lower
Trivection technology	•	•
Trivection/convection oven	•	Upper
Convection oven	•	Lower
Reverse-Air convection	•	•
Multi-rack convection bake	•	•
Single-rack convection bake	•	•
Convection roast	•	•
Optional closed-door broiling	•	•
Speed bake/speed broil	• / •	Upper/upper
Convection element	2500W	2500W
Variable broil/six-pass broil element	•	•
Dual power bake element	•	Upper
Eight-pass bake element	•	Lower
Roasting rack	•	•
Convenience		
Electronic glass touch controls	•	•
Heavy duty oven racks	3	3 (each oven)
Halogen oven lights	2	2 (each oven)
Self-clean delay option	•	•
Auto Recipe™ conversion	•	•
Convection mode conversion	•	•
Digital temperature display	•	•
Delay bake option with warm mode	•	•
Proof, warm, defrost modes	•	•
Audible preheat signal	•	•
Auto oven shut-off w/override	•	•
Control lock capability	•	•
Certified Sabbath mode	•	•
Appearance		
Oven door(s)	Stainless steel Black painted steel	Stainless steel Black painted steel
Monogram® tubular handle	•	•
Hand-polished, welded door seams	•	•
Flush appearance installation	•	•
Undercounter installation*	•	
General Features		
Oven cabinet width required (in.)	30	30
Rack positions	5	5 upper / 7 lower
Interior dimensions (WxHxD in inches)	upper lower	24 x 17-1/2 x 17-1/2 24 x 16-1/4 x 18-1/4
Overall dimensions (WxHxD in inches)		29-3/4 x 28-1/4 x 23-1/2 29-3/4 x 52-7/8 x 23-1/2
KW rating	@240VAC 208VAC	5.9 4.4
Amps	@240VAC 208VAC	24.6 21.2
Approx. shipping weight (lbs.)	199	333
Full warranty**	1-year	1-year

*Single oven not approved for installation

**See written warranty for details.



Single and double convection ovens

	ZET938SFSS ZET938BFBB	ZET958SFSS ZET958BFBB	ZEK938SFSS ZEK938BFBB	ZEK958SFSS ZEK958BFBB
Description				
	30" single oven	30" double oven	27" single oven	27" double oven
Performance				
Self-cleaning oven(s)	•	Upper and lower	•	Upper and lower
Oven capacity	4.1 cu. ft.	4.1 cu. ft. (each oven)	3.9 cu. ft.	3.9 cu. ft. (each oven)
Convection oven(s)	•	Upper and lower	•	Upper and lower
Hidden bake element	•	•	•	•
Reverse-Air convection	•	•	•	•
Multi-rack convection bake	•	•	•	•
Single-rack convection bake	•	•	•	•
Optional closed-door broiling	•	•	•	•
Convection element	2500W	2500W	2500W	2500W
Variable broil/broil element	3600W; 6-pass	3600W; 6-pass	3400W; 4-pass	3400W; 4-pass
Bake element	2700W; 8-pass	2700W; 8-pass	2650W; 6-pass	2650W; 6-pass
Roasting rack	•	•	•	•
Convenience				
Electronic glass touch controls	•	•	•	•
Self-clean porcelain oven racks	3	3 (each oven)	3	3 (each oven)
Concealed bake element	•	•	•	•
Halogen oven lights	2	2 (each oven)	2	2 (each oven)
Self-clean delay option	•	•	•	•
Convection mode conversion	•	•	•	•
Automatic meat thermometer	•	1 (each oven)	•	1 (each oven)
Digital temperature display	•	•	•	•
Electronic clock and kitchen timer	•	•	•	•
Delay bake option with Warm mode	•	•	•	•
Proof mode	•	•	•	•
Warm mode	•	•	•	•
°C or °F programmable	•	•	•	•
Audible preheat signal	•	•	•	•
Auto oven shut-off w/override	•	•	•	•
Control lock capability	•	•	•	•
Certified Sabbath mode	•	•	•	•
Appearance				
Oven door(s)	Stainless steel Black painted steel	Stainless steel Black painted steel	Stainless steel Black painted steel	Stainless steel Black painted steel
Monogram tubular handle	•	•	•	•
Hand-polished, welded door seams	•	•	•	•
Flush appearance installation	•	•	•	•
Undercounter installation	•	•	•	•
General features				
Oven cabinet width required (in.)	30	30	27	27
Rack positions	7	7 (each oven)	4	4 (each oven)
Interior dimensions upper (WxHxD in inches)		24 x 16-1/4 x 18-1/4		21-1/2 x 17 x 18-1/4
Interior dimensions lower (WxHxD in inches)	24 x 16-1/4 x 18-1/4		21-1/2 x 17 x 18-1/4	
Overall dimensions (WxHxD in inches)	29-3/4 x 28-1/4 x 23-1/4	29-3/4 x 52-7/8 x 23-1/4	26-5/8 x 29 x 23-1/4	26-5/8 x 51 x 23-1/4
KW rating @240VAC	3.6	7.2	3.4	6.8
KW rating @208VAC	2.7	5.4	2.6	5.1
Amps @240VAC	15	30	15	28.3
Amps @208VAC	13	26	13	24.5
Approx. shipping weight (lbs.)	135	260	100	164
Full warranty*	1-Year	1-Year	1-Year	1-Year

*See written warranty for details.



BUILT-IN COOKING



Single and double integrated convection wall ovens

	ZET1038SFSS ZET1038BFBB	ZET1058SFSS ZET1058BFBB
Description		
	30" single oven	30" double oven
Performance		
Self-cleaning oven(s)	•	Upper and lower
True European convection oven(s)	•	Upper and lower
True hidden bake element	•	•
Convection bake	•	•
Convection broil	•	•
Convection roast	•	•
Optional closed-door broiling	•	•
Convection element	2500W	2500W
Variable broil/broil element	3000W; 12-pass	3000W; 12-pass
Bake element	2500W	2500W
Broil pan	•	•
Roasting rack	•	•
Convenience		
Rotary controls	•	•
Self-clean porcelain oven racks (including floor rack)	4	4 (each oven)
Halogen oven lights	2	2 (each oven)
Self-clean delay option	•	•
Electronic clock	•	•
Kitchen timer	•	•
Timed/delayed baking option	•	•
Proof mode	•	•
Status indicator lights	Lock, heating, oven on	Lock, heating, oven on
Appearance		
Oven door(s)	Stainless steel Black painted steel	Stainless steel Black painted steel
Monogram® tubular handle	•	•
Control knobs	Stainless steel Black painted steel	Stainless steel Black painted steel
Hand-polished, welded door seams	•	•
Flush appearance installation	•	•
Undercounter installation	•	
General features		
Oven cabinet width required (in.)	30	30
Rack positions (including floor rack)	5	5 (each oven)
Interior dimensions upper (WxHxD in inches)		22-5/8 x 13-3/4 x 14-3/4
lower		22-5/8 x 13-3/4 x 14-3/4
Overall dimensions (WxHxD in inches)	29-1/4 x 23-1/4 x 22	29-1/4 x 48 x 22
KW rating @ 240VAC	3.3	6.5
208VAC	2.8	5.6
Amps @ 240VAC	13.8	27.1
208VAC	13.5	26.9
Approx. shipping weight (lbs.)	140	300
Full warranty*	1-year	1-year

*See written warranty for details.



Single and double professional wall ovens

	ZET1038PFSS	ZET1058PFSS
Description		
	30" single oven	30" double oven
Performance		
Self-cleaning oven(s)	•	Upper and lower
True European convection oven(s)	•	Upper and lower
True hidden bake element	•	•
Convection bake	•	•
Convection broil	•	•
Convection roast	•	•
Optional closed-door broiling	•	•
Convection element	2500W	2500W
Variable broil/broil element	3000W; 12-pass	3000W; 12-pass
Bake element	2500W	2500W
Broil pan	•	•
Roasting rack	•	•
Convenience		
Rotary controls	•	•
Self-clean porcelain oven racks (including floor rack)	4	4 (each oven)
Halogen oven lights	2	2 (each oven)
Self-clean delay option	•	•
Electronic clock	•	•
Kitchen timer	•	•
Timed/delayed baking option	•	•
Proof mode	•	•
Status indicator lights	Lock, heating, oven on	Lock, heating, oven on
Appearance		
Oven door(s)	Stainless steel	Stainless steel
Monogram professional handle	•	•
Control knobs	Die-cast	Die-cast
Hand-polished, welded door seams	•	•
Flush appearance installation	•	•
Undercounter installation	•	
General features		
Oven cabinet width required (in.)	30	30
Rack positions (including floor rack)	5	5 (each oven)
Interior dimensions upper (WxHxD in inches)	22-5/8 x 13-3/4 x 14-3/4	22-5/8 x 13-3/4 x 14-3/4
lower		22-5/8 x 13-3/4 x 14-3/4
Overall dimensions (WxHxD in inches)	29-1/4 x 23-1/4 x 22	29-1/4 x 48 x 22
KW rating @ 240VAC	3.3	6.5
@ 208VAC	2.8	5.6
Amps @ 240VAC	13.8	27.1
@ 208VAC	13.5	26.9
Approx. shipping weight (lbs.)	140	300
Full warranty*	1-year	1-year
Limited oven rack warranty*	Lifetime	Lifetime

*See written warranty for details.



BUILT-IN COOKING

Microwave Ovens

Built-In Microwave/Convection Ovens



ZMC1095SF Stainless steel built-in microwave/convection oven, 1.0 cu. ft. cavity, 800 watts of cooking power



ZMC1095WF White built-in microwave/convection oven 1.0 cu. ft. cavity, 800 watts of cooking power



ZMC1095BF Black built-in microwave/convection oven 1.0 cu. ft. cavity, 800 watts of cooking power

General Features

Sophisticated styling. Built-in design offers a stylish, integrated appearance.

Three modes. The microwave/convection oven offers three ways to cook: microwave, convection, or a combination of both.

Microwave/convection cooking. The convection mode uses a separate heating element and fan built into the rear wall to circulate air. This process allows gorgeous browning and roasting. You can also convection-cook with the microwave function for faster results, or use the oven for microwaving only.

Sensor cooking. An electronic sensor monitors the level of steam released by food and automatically adjusts cooking time to deliver optimal results.

Microwave Ovens with Sensor Cooking



ZE2160SF Stainless steel microwave oven 2.1 cu. ft. cavity, 1200 watts of cooking power



ZEM200SF Stainless steel compact microwave oven, 1.0 cu. ft. cavity, 800 watts of cooking power



ZEM200WF White compact microwave oven, 1.0 cu. ft. cavity, 800 watts of cooking power



ZEM200BF Black compact microwave oven 1.0 cu. ft. cavity, 800 watts of cooking power

General Features

Sophisticated styling. Electronic touch controls and a large viewing window make a sleek, modern statement.

Sensor cooking. An electronic sensor monitors the level of steam released by food and automatically adjusts cooking time to deliver optimal results.

Flexible installation. Optional built-in kit allows cabinet or wall installation, and an optional hanging kit allows you to mount unit under a cabinet.

Warming Drawers



ZTD910SFSS 30" stainless steel warming drawer
ZKD910SFSS 27" stainless steel warming drawer



ZTD910WFWW 30" white warming drawer



ZTD910BFBB 30" black warming drawer
ZKD910BFBB 27" black warming drawer

General Features

Sophisticated styling. Built-in design with hidden controls offers a look of understated elegance. For a personal statement, customize the drawer with a cabinet-compatible wood panel and your choice of handles.

Temperature settings. Monogram® warming drawers offer a range of temperature options, from a proof setting (approximately 75°F) to a high setting (approximately 230°F).

Humidity control. By opening or closing the warming drawer vent, you can keep foods crisp or maintain moisture.

Practical details. The design of the half rack not only distributes heat evenly, but it also provides fifty percent more surface area for stacking plates and food.

Installation versatility. All 30" and 27" warming drawers are UL-listed for use with Monogram wall ovens and cooktops.

Three-pan set. A set of three covered pans allows a choice of sizes for any dish: one 6-quart pan and two 3-quart pans.



Warming Drawer ZTD910BFBB



MICROWAVE OVENS
WARMING DRAWERS



Microwave ovens

	ZMC1095SF ZMC1095WF ZMC1095BF	ZE2160SF	ZEM200SF ZEM200WF ZEM200BF
Description	Built-in microwave/convection oven	Full-size countertop microwave oven	Compact microwave oven
Performance			
Oven cavity (cu. ft.)	1.0	2.1	1.0
Power rating*	800	1200	800
Electronic touch controls	•	•	•
Instant-on controls	•	•	•
Power levels	10	10	10
Micro Cook I & II	•	•	•
Sensor cooking controls	Popcorn, beverage, reheat and cook (vegetable 1,2,3/potato/fish/chicken/meat)	Popcorn, beverage, reheat, vegetables, potato, chicken and fish	Popcorn, beverage, reheat, vegetables, potato, chicken and fish
Convection cook	•		
Combination cook	•		
Combination roast (probe)	•		
Convenience			
Temp cook/hold (probe)	•		
Turntable		•	•
Add 30 seconds	•	•	•
Express cook	•	•	•
Kitchen timer	•	•	•
Delay/Start reminder	•	•	•
Turntable on/off			•
Auto/Time defrost	•	•	•
Child lock-out		•	•
Beeper volume	4 levels	4 levels	
Appearance			
Stainless steel interior	•		
Monogram® tubular handle	•		
Color appearance	Stainless steel White Black	Stainless steel with stainless steel case	Stainless steel door (black case) White door (white case) Black door (black case)
General features			
Optional built-in kit	27", 30" standard	JX2127SH (27") JX2130SH (30")	JX827SS (27") JX827WN (27") JX827BN (27")
Hanging kit			•
Amps @ 120VAC	13.0	13.9	11.5
Interior dimensions (WxHxD in inches)	18 x 8-3/16 x 11-1/2	17 x 11-1/2 x 19	16-23/32 x 8-1/16 x 12-15/32
Overall dimensions (WxHxD in inches)	26-3/4 x 18-5/8 x 16-3/8**	24 x 14 x 19-1/2**	23-25/32 x 11-11/64 x 12-55/64
Approx. shipping weight (lbs.)	84	51	43
Full warranty†	1-year	1-year	1-year
Limited magnetron warranty†	10-year	10-year	10-year
	*IEC-705 test procedure **Exterior dimensions: depth excludes handle. †See written warranty for details.		



Warming drawers

	ZTD910SFSS ZTD910WFWWW ZTD910BFBB	ZKD910SFSS ZKD910BFBB
Description		
	30" warming drawer	27" warming drawer
Features		
Infinite setting temperature control	75°F-230°F	75°F-230°F
Humidity control	Crisp/moist	Crisp/moist
Hidden control	•	•
Full-extension slides	•	•
On/Off switch	•	•
"On" indicator light	•	•
Half rack	•	•
3-pan set with covers	•	•
Appearance		
Color appearance	Stainless steel White painted steel Black painted steel	Stainless steel Black painted steel
Frameless drawer front	•	•
Monogram tubular handle	•	•
Accessories		
Custom panel kit	ZXD30B	ZXD27B
Additional 2-pan set	JXPN2	JXPN2
General features		
Interior dimensions (WxHxD in inches)	23-7/8 x 6-1/4 x 22-1/16	20-7/8 x 6-1/4 x 22-1/16
Overall dimensions (WxHxD in inches)	30 x 10-1/2 x 23-1/4	26-3/4 x 10-1/2 x 23-1/4
KW rating @ 120VAC	.45	.45
Amps @ 120VAC	15	15
Warming element	450W	450W
Approx. shipping weight (lbs.)	65	59
Full warranty*	1-year	1-year

*See written warranty for details.



MICROWAVE OVENS
WARMING DRAWERS



Three-pan set with covers included



Professional Ranges and Cooktops

Monogram® appliances not only inspire creative expression—they also inspire passion. In this section, you'll see how Monogram professional ranges and cooktops allow you to indulge your love of fine design, spectacular food and adventurous cooking.



Professional Range ZDP36N4DHSS



Professional Cooktop ZGU36N6HSS



Professional Range ZDP30N4HSS

Above left. The Monogram 36" professional range and coordinating restaurant-style hood offer an ideal combination of commercial styling and residential convenience. **Above center.** Paired with a straight-sided professional hood, the Monogram 36" professional cooktop invites gourmet exploration. **Above right.** The 30" professional range bespeaks an active, aroma-filled kitchen. **Far right.** Boldly styled and brilliantly executed, Monogram professional appliances become the dramatic focus of your kitchen and cooking experience.



Professional Range ZDP48N6DHSS



PROFESSIONAL
COOKING



Professional Tapered-Sided Hood ZV48TSFSS
Professional Range ZDP48N6DHSS

48" Dual-Fuel Professional Ranges



ZDP48N4GHSS (natural gas)
ZDP48L4GHSS (liquid propane)
 48" dual-fuel professional range with 4 gas burners, a grill and a griddle



ZDP48N6RHSS (natural gas)
ZDP48L6RHSS (liquid propane)
 48" dual-fuel professional range with 6 gas burners and a grill



ZDP48N6DHSS (natural gas)
ZDP48L6DHSS (liquid propane)
 48" dual-fuel professional range with 6 gas burners and a griddle

General Features

Professional styling. Oversized range makes a bold culinary statement in lustrous, professional-grade stainless steel.

Sealed, dual-flame stacked burners. Two separate flames on each burner give you a range of precise temperatures, from a low 140°F simmer to a powerful 17,000-BTU* setting. The burners are sealed to the recessed cooktop subsurface for easy cleaning.

Unique reversible grates. The individual burner grates are flat on one side and uniquely contoured on the other to accommodate various size woks. When positioned flat, the grates create a continuous cooking surface.

18,000-BTU* grill. The stainless steel surface is grooved on one side and rounded on the other for grilling versatility. A Gourmet Radiant™ tray ensures even heat distribution, while reducing flare-ups.

18,000-BTU* griddle. The 3/8"-thick, stainless steel griddle is sloped to offer a clean cooking surface. Thermostatic control ensures even heating and cooking results.

Main oven (4.6 cu. ft., 27" wide)/Companion oven (2.1 cu. ft., 12" wide). The large, self-cleaning convection oven offers two multi-pass broil and bake elements for even browning and baking. The companion oven is equipped with a single 6-pass broil element and 4-pass bake element.

Self-clean oven racks. Heavy-duty, porcelain-coated racks are designed to remain in the main oven during the oven self-clean cycle for effortless cleaning.

*15,000 BTU on liquid propane models



PROFESSIONAL
COOKING





Professional Restaurant-Style Hood ZV36RSFSS
Professional Range ZDP36N4RHSS

36" and 30" Dual-Fuel Professional Ranges



ZDP36N4RHSS (natural gas)
ZDP36L4RHSS (liquid propane)
36" dual-fuel professional range
with 4 gas burners and a grill



ZDP36N4DHSS (natural gas)
ZDP36L4DHSS (liquid propane)
36" dual-fuel professional range
with 4 gas burners and griddle



ZDP36N6HSS (natural gas)
ZDP36L6HSS (liquid propane)
36" dual-fuel professional range
with 6 gas burners



ZDP30N4HSS (natural gas)
ZDP30L4HSS (liquid propane)
30" dual-fuel professional range
with 4 gas burners

General Features

Professional styling. Combining style and quality in perfect measure, these ranges offer the impressive look and high-performance cooking capabilities of commercial appliances.

Sealed, dual-flame stacked burners. Each gas burner uses two separate flames to give you a range of precise temperature options, from an ultralow 140°F simmer to a powerful 17,000-BTU* setting. The burners are sealed to the recessed cooktop subsurface for easy cleaning.

Unique reversible grates. One side offers a flat surface for cooking with pots and pans, while the other side is uniquely contoured to allow stir-frying with a wok.

18,000-BTU* grill (36" range). The stainless steel grill grate is reversible, with a grooved surface for marinated foods and a rounded side for grilling of delicate foods. A Gourmet Radiant™ tray ensures even heat distribution, while reducing flare-ups from dripping juices.

18,000-BTU* griddle (36" range). The 3/8"-thick stainless steel griddle is sloped to offer a clean cooking surface. Thermostatic control ensures even heating and cooking results.

Self-clean oven racks. Heavy-duty, porcelain-coated oven racks are designed to remain in the oven during the oven self-clean cycle for effortless cleaning.

*15,000 BTU on liquid propane models



PROFESSIONAL
COOKING



Professional Island Hood ZV54ISHSS
Professional Cooktop ZGU48N4GHSS

48" and 36" Professional Cooktops



ZGU48N4GHSS (natural gas)
ZGU48L4GHSS (liquid propane)
 48" professional cooktop with
 4 gas burners, a grill and a griddle



ZGU48N6RHSS (natural gas)
ZGU48L6RHSS (liquid propane)
 48" professional cooktop with
 6 gas burners and a grill



ZGU48N6DHSS (natural gas)
ZGU48L6DHSS (liquid propane)
 48" professional cooktop with
 6 gas burners and a griddle



ZGU36N4RHSS (natural gas)
ZGU36L4RHSS (liquid propane)
 36" professional cooktop with
 4 gas burners and a grill



ZGU36N4DHSS (natural gas)
ZGU36L4DHSS (liquid propane)
 36" professional cooktop with
 4 gas burners and a griddle



ZGU36N6HSS (natural gas)
ZGU36L6HSS (liquid propane)
 36" professional cooktop with
 6 gas burners

General Features

Professional styling. Professional-grade stainless steel with cast-iron grates makes a striking design statement in any kitchen.

Sealed, dual-flame stacked burners. Each gas burner uses two separate flames to give you a range of precise temperature options, from an ultralow 140°F simmer to a powerful 17,000-BTU* setting. The burners are sealed to the recessed cooktop subsurface for easy cleaning.

Unique reversible grates. One side offers a flat surface for cooking with pots and pans, while the other side is uniquely contoured to allow stir-frying with a wok.

18,000-BTU* grill. The stainless steel grill grate is reversible, with a grooved surface for marinated foods and a rounded side for searing of meats and fish. A Gourmet Radiant™ tray ensures even heat distribution, while reducing flare-ups from dripping juices.

18,000-BTU* griddle. The 3/8"-thick stainless steel griddle is sloped to offer a clean cooking surface. Thermostatic control ensures even heating and cooking results.

*15,000 BTU on liquid propane models



PROFESSIONAL
COOKING



Unique reversible grates.
One side offers a flat surface for cooking with pots and pans, while the other side is uniquely contoured to allow stir-frying with a wok.



Sealed, dual-flame stacked burners
Two separate flames delivered from each burner provide complete low-simmer-to-rapid-boil flexibility (140°F simmer to 15,000 BTU).



Thermostatic griddle.
Perfect for omelets and panini sandwiches, the stainless steel griddle uses a thermostatic control to precisely regulate cooking temperature for fast, evenly browned results.



Reversible grill grates. The stainless steel grate is grooved on one side to channel juices from seasoned or marinated foods. Turning the grate over, with the bars positioned rounded side up, allows grilling and searing of delicate foods.



Self-clean oven racks.
Heavy-duty, porcelain-coated oven racks are designed to remain in the oven during the oven self-clean cycle for effortless cleaning.

Creating a Professional Kitchen

Size

Choose the model that accommodates your personal needs and preferences. If you have always wanted an oversized professional range, the 48" model can become the design and performance centerpiece of your kitchen. If you're remodeling, a 30" range will fit smoothly into your design plans. A professional cooktop is an ideal design choice when you prefer separate areas for cooking preparation and oven baking.



48" dual-fuel range



36" dual-fuel range



30" dual-fuel range



48" gas cooktop



36" gas cooktop

Cooktop and Range Configurations

Select the cooktop that best suits your cooking style. If you choose a 48" or 36" range or cooktop model, you can select the burner combination. All models are equipped with reversible grates, which give you the option of cooking on a flat or concave wok surface.



48" cooktop with 4 gas burners, a grill and griddle



48" cooktop with six gas burners and a grill



48" cooktop with six gas burners and a griddle



36" cooktop with four gas burners and a grill



36" cooktop with four gas burners and a griddle



36" cooktop with six gas burners



48" Dual-fuel professional ranges

	ZDP48N4GHSS ZDP48L4GHSS	ZDP48N6RHSS ZDP48L6RHSS	ZDP48N6DHSS ZDP48L6DHSS
Description	48" range with 4 burners, grill and griddle	48" range with 6 burners and grill	48" range with 6 burners and griddle
Cooktop performance			
Dual-flame stacked sealed burners	(4) 17,000 BTU (nat.) (4) 15,000 BTU (LP)	(6) 17,000 BTU (nat.) (6) 15,000 BTU (LP)	(6) 17,000 BTU (nat.) (6) 15,000 BTU (LP)
140°F simmer capability	•	•	•
Electronic ignition with auto reignition	•	•	•
Reversible cast-iron, porcelain-enameled grates	•	•	•
Thermostatically controlled 18,000-BTU griddle	•	•	•
18,000-BTU grill	•	•	
Cooktop convenience			
Porcelain burner pans	•	•	•
Two-piece, reversible grill grate	Stainless steel cast	Stainless steel cast	
Gourmet radiant grill trays	•	•	
Stainless steel, slide-out drip tray	•	•	•
Removable drip tray liner	1 beneath grill 1 beneath griddle	1 beneath grill	1 beneath griddle
Oven performance			
Oven capacity	main oven 4.6 cu. ft. companion oven 2.1 cu. ft.	main oven 4.6 cu. ft. companion oven 2.1 cu. ft.	main oven 4.6 cu. ft. companion oven 2.1 cu. ft.
Type	main oven Convection/self-clean companion oven Thermal	main oven Convection/self-clean companion oven Thermal	main oven Convection/self-clean companion oven Thermal
Bake element	main oven 3100W/10-pass companion oven 2800W/4-pass	main oven 3100W/10-pass companion oven 2800W/4-pass	main oven 3100W/10-pass companion oven 2800W/4-pass
Dual broil elements	main oven 4000W/8-pass companion oven 3600W/8-pass	main oven 4000W/8-pass companion oven 3600W/8-pass	main oven 4000W/8-pass companion oven 3600W/8-pass
Oven convenience			
Rack positions	main oven 4 companion oven 4	main oven 4 companion oven 4	main oven 4 companion oven 4
Self-clean porcelain-enameled oven racks	main oven 3 companion oven 2	main oven 3 companion oven 2	main oven 3 companion oven 2
Halogen oven lights	main oven 2 companion oven 1	main oven 2 companion oven 1	main oven 2 companion oven 1
Proof mode	Companion oven	Companion oven	Companion oven
Auto self-clean door lock	Main oven	Main oven	Main oven
Broil pans	2	2	2
Convection roasting rack	1	1	1
Appearance			
Control knobs	Die-cast	Die-cast	Die-cast
Stainless steel grill/griddle covers	2	1	1
Burner, oven "on" and heating indicator lights	•	•	•
Factory-installed island backguard	•	•	•
Optional 12" stainless steel backsplash	ZX12B48HSS	ZX12B48HSS	ZX12B48HSS
Optional 22" stainless steel backsplash with warming shelf	ZX22B48HSS	ZX22B48HSS	ZX22B48HSS
General features			
Fuel type-oven	Electric	Electric	Electric
Fuel type-cooktop*	Natural gas Liquid propane gas	Natural gas Liquid propane gas	Natural gas Liquid propane gas
Interior dimensions (WxHxD in inches)	main oven 27-3/4 x 14-1/4 x 18-1/2 companion oven 12 x 14-1/4 x 20-1/2	main oven 27-3/4 x 14-1/4 x 18-1/2 companion oven 12 x 14-1/4 x 20-1/2	main oven 27-3/4 x 14-1/4 x 18-1/2 companion oven 12 x 14-1/4 x 20-1/2
Overall dimensions (WxHxD in inches)	47-7/8 x 35-1/4 to 36-3/4 x 28-1/4	47-7/8 x 35-1/4 to 36-3/4 x 28-1/4	47-7/8 x 35-1/4 to 36-3/4 x 28-1/4
4-prong power cord	• (installed)	• (installed)	• (installed)
Amps	@ 240VAC 41.0 @ 208VAC 34.6	41.0 34.6	41.0 34.6
Approx. shipping weight (lbs.)	640	640	640
Full warranty**	1-year	1-year	1-year
Limited burner warranty**	5-year	5-year	5-year
Limited oven rack warranty**	Lifetime	Lifetime	Lifetime

*Must specify natural or liquid propane gas by model numbers.

**See written warranty for details.

Backsplash options.

Choose a 12" or 22" backsplash for combustible-wall installations. The 22" backsplash is designed with a slotted shelf/warming rack.



ZX12B48HSS
12" backsplash



ZX22B48HSS
22" backsplash with warming shelf



PROFESSIONAL
COOKING



36" and 30" Dual-fuel professional ranges

	ZDP36N6HSS ZDP36L6HSS	ZDP36N4RHSS ZDP36L4RHSS	ZDP36N4DHSS ZDP36L4DHSS	ZDP30N4HSS ZDP30L4HSS
Description	36" range with 6 burners	36" range with 4 burners and grill	36" range with 4 burners and griddle	30" range with 4 burners
Cooktop performance				
Dual-flame stacked sealed burners	(6) 17,000 BTU (nat.) (6) 15,000 BTU (LP)	(4) 17,000 BTU (nat.) (4) 15,000 BTU (LP)	(4) 17,000 BTU (nat.) (4) 15,000 BTU (LP)	(4) 17,000 BTU (nat.) (4) 15,000 BTU (LP)
140°F simmer capability	•	•	•	•
Electronic ignition w/ automatic reignition	•	•	•	•
Reversible cast-iron, porcelain-enameled grates	•	•	•	•
Center cooktop grate				•
Thermostatically controlled 18,000-BTU griddle			•	
18,000-BTU grill		•		
Cooktop convenience				
Porcelain burner pans	•	•	•	•
Two-piece, reversible grill grate		Stainless steel cast		
Gourmet radiant grill trays		•		
Stainless steel slide-out drip tray		•	•	
Removable drip tray liner		1 beneath grill	1 beneath griddle	
Oven performance				
Oven capacity	4.6 cu. ft.	4.6 cu. ft.	4.6 cu. ft.	4.0 cu. ft.
Self-clean convection oven	•	•	•	•
Bake element	3100W/10-pass	3100W/10-pass	3100W/10-pass	3700W/6-pass
Dual broil elements	4000W/8-pass	4000W/8-pass	4000W/8-pass	4000W/8-pass
Oven convenience				
Rack positions	4	4	4	4
Self-clean porcelain-enameled oven racks	3	3	3	3
Halogen oven lights	2	2	2	1
Auto self-clean door lock	•	•	•	•
Broil pans	1	1	1	1
Convection roasting rack	1	1	1	1
Appearance				
Control knobs	Die-cast	Die-cast	Die-cast	Die-cast
Stainless steel grill/griddle covers		1	1	
Burner, oven "on" and heating indicator lights	•	•	•	•
Factory-installed island backguard	•	•	•	•
Optional 9" stainless steel backsplash				ZX9B30HSS
Optional 12" stainless steel backsplash	ZX12B36HSS	ZX12B36HSS	ZX12B36HSS	
Optional 22" stainless steel backsplash with warming shelf	ZX22B36HSS	ZX22B36HSS	ZX22B36HSS	ZX22B30HSS
General features				
Fuel type-oven	Electric	Electric	Electric	Electric
Fuel type-cooktop*	Natural gas Liquid propane gas	Natural gas Liquid propane gas	Natural gas Liquid propane gas	Natural gas Liquid propane gas
Interior dimensions (WxHxD in inches)	27-3/4 x 14-1/4 x 18-1/2	27-3/4 x 14-1/4 x 18-1/2	27-3/4 x 14-1/4 x 18-1/2	24 x 14 x 20-3/8
Overall dimensions (WxHxD in inches)	35-7/8 x 35-1/4 to 36-3/4 x 28-1/4	35-7/8 x 35-1/4 to 36-3/4 x 28-1/4	35-7/8 x 35-1/4 to 36-3/4 x 28-1/4	29-7/8 x 35-1/4 to 36-3/4 x 26-3/4
4-prong power cord	• (installed)	• (installed)	• (installed)	• (installed)
Amps @ 240VAC	22.2	22.2	22.2	18.7
@ 208VAC	18.7	18.7	18.7	16.2
Approx. shipping weight (lbs.)	450	450	450	420
Full warranty**	1-year	1-year	1-year	1-year
Limited burner warranty**	5-year	5-year	5-year	5-year
Limited oven rack warranty**	Lifetime	Lifetime	Lifetime	Lifetime

*Must specify natural or liquid propane gas by model numbers.
**See written warranty for details.

Backsplash options.

To properly finish your 36" range, choose 12" or 22" backsplash for combustible-wall installations. For your 30" range, choose 9" or 22" backsplash for combustible-wall installations.



ZX12B36HSS
12" backsplash
ZX9B30HSS
9" backsplash



ZX22B36HSS
ZX22B30HSS
22" backsplash
with warming shelf



48" and 36" Professional cooktops

	ZGU48N4GHSS ZGU48L4GHSS	ZGU48N6RHSS ZGU48L6RHSS	ZGU48N6DHSS ZGU48L6DHSS	ZGU36N6HSS ZGU36L6HSS	ZGU36N4RHSS ZGU36L4RHSS	ZGU36N4DHSS ZGU36L4DHSS
Description	48" cooktop with 4 burners, grill and griddle	48" cooktop with 6 burners and grill	48" cooktop with 6 burners and griddle	36" cooktop with 6 burners	36" cooktop with 4 burners and grill	36" cooktop with 4 burners and griddle
Performance	(4) 17,000 BTU (nat.)	(6) 17,000 BTU (nat.)	(6) 17,000 BTU (nat.)	(6) 17,000 BTU (nat.)	(4) 17,000 BTU (nat.)	(4) 17,000 BTU (nat.)
Dual-flame stacked sealed burners	(4) 15,000 BTU (LP)	(6) 15,000 BTU (LP)	(6) 15,000 BTU (LP)	(6) 15,000 BTU (LP)	(4) 15,000 BTU (LP)	(4) 15,000 BTU (LP)
140°F simmer capability	•	•	•	•	•	•
Electronic ignition w/automatic reignition	•	•	•	•	•	•
Reversible cast-iron, porcelain-enameled grates	•	•	•	•	•	•
Thermostatically controlled 18,000-BTU griddle	•		•			•
18,000-BTU grill	•	•			•	
Convenience						
Porcelain burner pans	•	•	•	•	•	•
Two-piece, reversible grill grate	Stainless steel cast	Stainless steel cast	Stainless steel cast	Stainless steel cast	Stainless steel cast	Stainless steel cast
Gourmet radiant grill trays	•	•			•	
Stainless steel, slide-out drip tray	•	•	•		•	•
Removable drip tray liner	1 beneath grill, 1 beneath griddle	1 beneath grill	1 beneath griddle		1 beneath grill	1 beneath griddle
Appearance						
Control knobs	Die-cast	Die-cast	Die-cast	Die-cast	Die-cast	Die-cast
Stainless steel grill/griddle cover	2	1	1		1	1
Burner "on" indicator lights	•	•	•	•	•	•
Factory-installed island backguard	•	•	•	•	•	•
Optional 12" stainless steel backsplash	ZX12B48HSS	ZX12B48HSS	ZX12B48HSS	ZX12B36HSS	ZX12B36HSS	ZX12B36HSS
Optional 22" stainless steel backsplash with warming shelf	ZX22B48HSS	ZX22B48HSS	ZX22B48HSS	ZX22B36HSS	ZX22B36HSS	ZX22B36HSS
General features						
Fuel type*	Natural gas Liquid propane gas	Natural gas Liquid propane gas	Natural gas Liquid propane gas	Natural gas Liquid propane gas	Natural gas Liquid propane gas	Natural gas Liquid propane gas
Overall dimensions (WxHxD in inches)	47-7/8 x 8-7/16 x 26-5/8	47-7/8 x 8-7/16 x 26-5/8	47-7/8 x 8-7/16 x 26-5/8	35-7/8 x 8-7/16 x 26-5/8	35-7/8 x 8-7/16 x 26-5/8	35-7/8 x 8-7/16 x 26-5/8
Amps @ 120VAC	6.6	3.3	3.3	1.0	3.3	3.3
Approx. shipping weight (lbs.)	324	324	324	228	228	228
Full warranty**	1-year	1-year	1-year	1-year	1-year	1-year
Limited burner warranty**	5-year	5-year	5-year	5-year	5-year	5-year

*Must specify natural or liquid propane gas by model numbers.

**See written warranty for details.

Backsplash options.

Monogram® professional cooktops come equipped for island or noncombustible wall installations. For combustible wall installations, an optional 12" or 22" backsplash is available.



ZX12B48HSS
12" backsplash



ZX22B48HSS
22" backsplash



ZX12B36HSS
12" backsplash



ZX22B36HSS
22" backsplash



PROFESSIONAL
COOKING



Ventilation Systems

Sometimes inspiration takes shape in the simplest, most beautiful forms. Here, the sculptural beauty of Monogram® ventilation hoods is yours to behold.



Dual-blower Hood ZV950SDSS



Wall-mounted Hood ZV750SY



Professional Straight-sided Hood ZV30SSFSS

Above left. The Monogram dual-blower chimney hood is a study in sculptural elegance. **Above center.** The curved design of the Monogram chimney hood adds dimension and distinction to your kitchen. **Above right.** The Monogram professional straight-sided hood fits smoothly between cabinetry and also stands beautifully on its own as an attractive design of clean, simple lines. **Far right.** Highlighted on an open wall, the stainless steel chimney hood with retractable canopy provides maximum impact.



Stainless Steel Hood ZV800SJSS
Gas Cooktop ZGU375NSDSS



VENTILATION

Black Hood ZV800BJBB



Dual-blower Island Hood ZV1050SFSS



Stainless Steel Hood ZV800SJSS



Stainless Steel Island Hood ZV850SB



Chimney Hoods



ZV1050SFSS 42" stainless steel island dual-blower hood (finished on all sides)

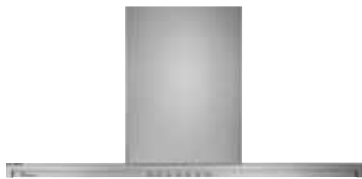


ZV950SDSS 36" stainless steel wall-mounted dual-blower hood (finished on three sides only)



ZV850SB 36" stainless steel island hood (finished on all sides)

ZV750SY 36" stainless steel wall-mounted hood (finished on three sides only)



ZV800SJSS 36" stainless steel wall-mounted hood with retractable glass canopy (under-cabinet or stand-alone installation)



ZV800BJBB 36" black wall-mounted hood with retractable glass canopy (under-cabinet or stand-alone installation)

General Features

Attractive design. Expertly crafted with uncompromising attention to detail, a Monogram® hood adds a striking architectural highlight to your kitchen.

Powerful ventilation. The variable-speed fan blower provides the power necessary to capture the smoke and oily fumes produced by high-performance cooking equipment.

Halogen lighting. Six levels of intensity are offered for different needs, from accent to ambient settings.

Removable filters. Filters can be easily detached from the hood for safe cleaning in your dishwasher.



The Monogram chimney hood with retractable canopy captures the essence of sophistication, while helping to keep the kitchen free of smoke and steam. The slim glass canopy can be extended to capture additional cooking fumes. It also retracts flush with the stainless steel frame.



VENTILATION



Professional Hoods



ZV48RSFSS 48" professional restaurant-style hood (shown)
 ZV36RSFSS 36" professional restaurant-style hood
 ZV30RSFSS 30" professional restaurant-style hood

These models include 22" stainless steel backsplash and warming shelf.

All three hoods above are shown with optional duct cover.



ZV48TSFSS 48" professional tapered-sided hood (shown)
 ZV36TSFSS 36" professional tapered-sided hood
 ZV30TSFSS 30" professional tapered-sided hood



ZV48SSFSS 48" professional straight-sided hood (shown)
 ZV36SSFSS 36" professional straight-sided hood
 ZV30SSFSS 30" professional straight-sided hood



ZV54ISHSS 54" professional island hood (shown)
 ZV42ISHSS 42" professional island hood

General Features

Professional styling. Crafted of premium-grade stainless steel, with every edge buffed by hand, Monogram® professional hoods make a compelling statement of quality and refinement.

Powerful ventilation. A powerful centrifugal blower, up to 1200 CFM, and variable-speed control keep your kitchen free of fumes and excess heat.

Infrared warming lamps. Powerful infrared lamps on wall-mounted hoods cast a warm glow over the cooking surface, while generating the heat necessary to keep baked goods at ready-to-serve temperatures.

Brilliant task lighting. Halogen lights illuminate the cooktop surface below and can be adjusted to complement the dining occasion.

Removable filters. During ventilation, stainless steel filters trap airborne grease particles, and can be easily removed for safe cleaning in your dishwasher.

Telescopic Downdraft Vents



ZVB36SHSS 36" stainless steel telescopic downdraft vent
 ZVB30SHSS 30" stainless steel telescopic downdraft vent



ZVB36WHWW 36" white telescopic downdraft vent



ZVB36BHBB 36" black telescopic downdraft vent
 ZVB30BHBB 30" black telescopic downdraft vent

General Features

Powerful ventilation. A 3-1/4" x 10" rectangular duct and a durable, stainless steel vent capture smoke and odors at the cooking surface. A variable-speed fan blower exhausts the air at a rate of 500 CFM.

Removable filters. Filters can be easily removed for safe cleaning in your dishwasher.

Remote blower placement installation kit. To reduce noise in the kitchen, an outdoor or indoor installation kit is offered for remote blower placement.





Chimney hoods

	ZV1050SFSS	ZV950SDSS	ZV850SB	ZV750SY	ZV800SJSS ZV800BJBB
Description					
	42" island vent hood	36" wall-mount vent hood	36" island vent hood	36" wall-mount vent hood	36" wall-mount vent hood
Features					
Electronic touch controls	•	•	•	•	•
Vertical exhaust blower rating	1080 CFM	700 CFM	360 CFM	360 CFM	500 CFM
Dual blowers	•	•			
Boost mode	•	•	•	•	•
Retractable glass canopy					•
Halogen lamps	4	4	4	4	2
Variable lighting control	6-level	6-level	6-level	6-level	6-level
Removable stainless steel filters	4	3	3	3	2
Filter cleaning reminder	•	•	•	•	
Variable-speed fan control	4-level	4-level	4-level	4-level	4-level
Time-delay shut-off	•	•	•	•	•
Blower indicator light	•	•	•	•	•
Stainless steel utensil racks	•	•	•	•	
Appearance					
Color appearance	Stainless steel	Stainless steel	Stainless steel	Stainless steel	Stainless steel Black
Exhaust options					
8" round exhaust duct	•	•			
6" round exhaust duct			•	•	•
Exhaust damper	•	•	•	•	•
8' ceiling duct cover	• (included)	• (included)	ZX858SB (optional)*	• (included)	• (included)
9' ceiling duct cover	ZX1059SFSS (optional)	• (included)	ZX859SB (optional)*	• (included)	• (included)
10' ceiling duct cover	ZX10510SFSS (optional)	• (included)	ZX8510SB (optional)*	ZX10SY (optional)	• (included)
10' to 14' ceiling extension duct cover		ZX14SDSS (optional)			
Optional 8' ceiling recirculating kit**			ZXR858C	ZXR758C	• (included)
Optional 9' ceiling recirculating kit**			ZXR859C	ZXR758	• (included)
Optional 10' ceiling recirculating kit**			ZXR8510C	ZX7510C	• (included)
General features					
Overall dimensions (WxHxD in inches)	42 x 10 x 31-1/2	35-5/8 x 10 x 25	35-3/8 x 8-1/4 x 27-1/2	34-5/8 x 8-1/4 x 21-5/8	36 x 1-1/2 x 18-15/16 36 x 1-1/2 x 13-11/16
Amps @ 120VAC	6.7	4.5	2.7	2.7	3.3
Approx. shipping weight (lbs.)	150	110	81	81	100
Full warranty†	1-year	1-year	1-year	1-year	1-year

*ZV850SB hood requires one of the ceiling extension duct covers.

**Recirculating kit for ZV750 and ZV850 only. The ZV850 hood requires extension duct cover OR recirculating kit, not both.

†See written warranty for details.



Recirculating kit (for ZV850 and ZV750 models). An optional vent hood kit for recirculating air can be installed for internal ventilation.

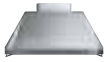


Professional hoods

	ZV48RSFSS	ZV36RSFSS ZV30RSFSS	ZV48TSFSS	ZV36TSFSS ZV30TSFSS	ZV48SSFSS	ZV36SSFSS ZV30SSFSS
Description						
	48" professional restaurant-style	36" and 30" professional restaurant-style	48" professional tapered-sided	36" and 30" professional tapered-sided	48" professional straight-sided	36" and 30" professional straight-sided
Features						
Variable-speed fan control	4-speed	4-speed	4-speed	4-speed	4-speed	4-speed
Internal blower rating	1200 CFM	640 CFM	1200 CFM	640 CFM	1200 CFM	640 CFM
Halogen lamps	3	2	3	2	3	2
Variable lighting control	4-level	4-level	4-level	4-level	4-level	4-level
Infrared warming lights	2	1	2	1	2	1
Removable stainless steel filters	3 mesh	2 mesh	3 baffle	2 baffle	3 baffle	2 baffle
Stainless steel backsplash	•	•				
Stainless steel warming shelf	•	•				
Grease trays	1	1	3	2	3	2
Blower indicator light	•	•	•	•	•	•
Stainless steel utensil racks	•	•	•	•	•	•
10" round exhaust duct	•	•	•	•	•	•
Exhaust damper	•	•	•	•	•	•
Snap-in blower assembly	•	•	•	•	•	•
Appearance						
Color appearance	Stainless steel	Stainless steel	Stainless steel	Stainless steel	Stainless steel	Stainless steel
Accessories						
6" standard stackable duct cover	ZX48DC6	ZX36DC6	ZX48DC6	ZX36DC6	ZX48DC6	ZX36DC6
12" standard stackable duct cover	ZX48DC12	ZX36DC12	ZX48DC12	ZX36DC12	ZX48DC12	ZX36DC12
6" full-width stackable duct covers	ZX48FWDC6	ZX36FWDC6 ZX30FWDC6			ZX48FWDC6	ZX36FWDC6 ZX30FWDC6
12" full-width stackable duct covers	ZX48FWDC12	ZX36FWDC12 ZX30FWDC12			ZX48FWDC12	ZX36FWDC12 ZX30FWDC12
General features						
Overall dimensions (WxHxD in inches)	48 x 22-1/2 x 25	36 x 22-1/2 x 25 30 x 22-1/2 x 25	48 x 18 x 25	36 x 18 x 25 30 x 18 x 25	48 x 18 x 25	36 x 18 x 25 30 x 18 x 25
Amps @ 120 VAC	12.4	6.4	12.4	6.4	12.4	6.4
Approx. shipping weight. (lbs.)	130	110 100	130	110 100	130	110 100
Full warranty*	1-year	1-year	1-year	1-year	1-year	1-year

*See written warranty for details.





Professional island hoods

	ZV54ISHSS	ZV42ISHSS
Description		
	54" professional island hood	42" professional island hood
Features		
Variable-speed fan control	4-speed	4-speed
Internal blower rating	1200 CFM	1200 CFM
Halogen lamps	6	4
Variable light control	4-level	4-level
Removable stainless steel filters	3 baffle	2 baffle
Grease trays	3	2
Blower indicator light	•	•
Stainless steel utensil racks	•	•
10" round exhaust duct	•	•
Exhaust damper	•	•
Snap-in blower assembly	•	•
Appearance		
Color appearance	Stainless steel	Stainless steel
Accessories		
8' duct cover (7'11" - 8'5" ceiling height)	Included	Included
10' duct cover extension (8'6" - 10'4" ceiling height)	ZX54DC10	ZX42DC10
General features		
Overall dimensions (WxHxD in inches)	54 x 24 x 36-1/4	42 x 20 x 31-3/4
Amps @ 120VAC	10.4	9.5
Approx. shipping weight. (lbs.)	210	170
Full warranty*	1-year	1-year
	*See written warranty for details.	



Telescopic downdraft vents

	ZVB36SHSS ZVB36WHWW ZVB36BHBB	ZVB30SHSS ZVB30BHBB
Description		
	36" telescopic downdraft system	30" telescopic downdraft system
Performance		
Variable-speed fan control	•	•
Downdraft exhaust	500 CFM	500 CFM
Removable grease filters	•	•
3-1/4" x 10" rectangular duct	•	•
Convenience		
Remote-mounted controls	•	•
Indoor remote blower kit	JXRB67	JXRB67
Outdoor remote blower kit with cover	JXBC67	JXBC67
Appearance		
Top trim color	Stainless steel White Black	Stainless steel Black
Stainless steel vent body	•	•
General features		
Width (in inches)	36	30
Amps @ 120VAC	5.2	5.2
Approx. shipping weight (lbs.)	62	60
Full warranty*	1-year	1-year
	*See written warranty for details.	

Pairing hoods with cooking equipment

Monogram® hoods are designed to perfectly coordinate with Monogram ranges and cooktops. To learn which cooking products can be combined with the hood you have selected, refer to the charts below.

	Wall-mounted			Island		Downdraft
	ZV750SY	ZV950SDSS	ZV800SJ/BJ	ZV850SB	ZV1050SFSS	ZVB36SH/WH/BH ZVB30SH/WH/BH
Installation combinations						
	All non-pro cooktops	All 30" & 36" cooktops and ranges	All non-pro cooktops	All non-pro cooktops	All 30" & 36" cooktops and ranges	All non-pro cooktops
Style						
	Chimney	Chimney	Chimney (slide-out)	Chimney	Chimney	Integrated
Width						
	36"	36"	36"	36"	42"	36"/30"
Blower rating						
	360 CFM	700 CFM	500 CFM	360 CFM	1080 CFM	500 CFM
Recirculating option						
	8'-10' options	No	8'-10' options	8'-10' options	No	No
Vented duct cover options						
	8', 9' duct cover <u>included</u> ; 10' ceiling duct cover optional	8', 9' or 10' duct cover <u>included</u> ; 10' to 14' duct cover optional	8' to 10' duct cover <u>included</u> ; or undercabinet option	8', 9' or 10' duct cover <u>required</u> ; must order separately	8' duct cover <u>included</u> , 9' or 10' duct cover optional	Indoor, outdoor remote blower options
Duct size						
	6" round	8" round	6" round	6" round	8" round	3-1/4" x 10" rect.
Equivalent duct length						
	100'	100'	100'	100'	100'	150'

	Professional wall-mounted			Professional island	
	ZV48TSFSS ZV36TSFSS ZV30TSFSS	ZV48SSFSS ZV36SSFSS ZV30SSFSS	ZV48RSFSS ZV36RSFSS ZV30RSFSS	ZV42ISHSS	ZV54ISHSS
Installation combinations					
	All Monogram cooktops and ranges	All Monogram cooktops and ranges	All Monogram cooktops and ranges	All 30" & 36" cooktops	All Monogram cooktops and ranges
Style					
	Tapered	Straight	Restaurant	Tapered	Tapered
Width					
	48"/36"/30"	48"/36"/30"	48"/36"/30"	42"	54"
Blower rating					
	1200/640/640 CFM	1200/640/640 CFM	1200/640/640 CFM	1200 CFM	1200 CFM
Recirculating option					
	No	No	No	No	No
Vented duct cover options					
	Optional 6" and 12" duct covers -stackable	Optional 6" and 12" duct covers, standard or full-width -stackable	Optional 6" and 12" duct covers, standard or full-width -stackable	8' duct cover <u>included</u> , 9' to 10' duct cover optional	8' duct cover <u>included</u> , 9' to 10' duct cover optional
Duct size					
	10" round	10" round	10" round	10" round	10" round
Equivalent duct length					
	150'	150'	150'	150'	150'



VENTILATION



Outdoor Cooking Products

On a warm, sun-lit evening, nothing inspires like the relaxing splendor of plain-air dining, especially when Monogram® appliances are close at hand.



Dual-burner Cooktop ZX2NYSS
Gas Grill ZGG48N42CSS
and Stainless Steel Storage
Doors ZXADYSS



Gas Grill ZGG36N31CSS with Stainless Steel Storage
Doors ZXADYSS and Dual-burner Cooktop ZX2NYSS
and Outdoor/Indoor Refrigerator ZDOD240PSS

Above left. The Monogram 48" built-in cooking center offers tremendous grilling power and performance, with four 20,000-BTU burners, dual rotisserie burners, one smoker burner and a separate two-burner cooktop. **Above center.** For the ultimate in cooking versatility, the built-in cooking center includes a 36" grill with a dual-burner cooktop. **Far right.** The 36" grill's portable cart includes an array of conveniences, from condiment bins on doors to large stainless steel shelves.

Gas Grill ZGG36L31CSS
with Cart ZX36CTACSS



OUTDOOR
COOKING

48" and 36" Outdoor Cooking Centers



ZGG48N42CSS (natural gas)
ZGG48L42CSS (liquid propane)
48" gas grill with four grill burners, two rotisserie burners, one smoker, one warming rack



ZGG48N31CSS (natural gas)
ZGG48L31CSS (liquid propane)
48" gas grill with three grill burners, one rotisserie burner, one smoker, two cooktop burners, one warming rack



ZGG36N31CSS (natural gas)
ZGG36L31CSS (liquid propane)
36" gas grill with three grill burners, one rotisserie burner, one smoker, one warming rack



ZGG36N21CSS (natural gas)
ZGG36L21CSS (liquid propane)
36" gas grill with two grill burners, one rotisserie burner, one smoker, two cooktop burners, one warming rack

General Features

Gourmet Radiant™ trays. Beneath the grill racks, these uniquely designed trays ensure even heat distribution. They also reduce grease flare-ups, eliminating the need for lava rocks or briquettes, and remove easily for cleanup.

Porcelain-coated, cast-iron grill burners. Two 20,000-BTU "H" burners provide the power necessary to evenly heat the entire grilling area.

Heavy-duty grill racks. The heavy, heat-retaining grill racks are porcelain-enameled for easy cleaning and long life.

Brass valves. Burner controls are mounted on durable brass valves, ensuring long life in an outdoor environment.

Infrared rotisserie system. A ceramic infrared burner, mounted behind the motorized rotisserie, reaches cooking temperature in just 30 seconds.

Built-in smoker system. Includes an independent 5000-BTU burner with variable temperature control and a full-extension, slide-out drawer for wood chips.

Slide-out drip tray. The stainless steel drip tray below the grill and cooktop burners collects grease and spills and slides out for easy cleaning.

27" and 24" Outdoor Cooking Centers



ZGG27N21CSS (natural gas)
ZGG27L21CSS (liquid propane)
27" gas grill with two grill burners, one rotisserie burner, one warming rack

ZGG27N20CSS (natural gas)
ZGG27L20CSS (liquid propane)
27" gas grill with two grill burners, one warming rack

General Features

Gourmet Radiant™ trays. Beneath the grill racks, these uniquely designed trays ensure even heat distribution. They reduce grease flare-ups, eliminating the need for lava rocks or briquettes, and remove easily for cleanup.

Porcelain-coated, cast-iron grill burners. Two 20,000-BTU "H" burners evenly heat the entire grilling area.

Infrared rotisserie system. A ceramic 14,000-BTU infrared burner, mounted behind the motorized rotisserie, reaches cooking temperature in just 30 seconds, providing the intense heat needed for searing meats and poultry.

Slide-out drip tray. The stainless steel drip tray below the grill burners collects grease and spills and slides out for easy cleaning.



ZGG24L20BSS (liquid propane)
24" gas grill with two grill burners, one rotisserie (natural gas conversion kit available)

General Features

Stainless steel burners. Two 15,000-BTU burners supply the entire grilling area with intense heat.

Built-in rotisserie burner. The rear ceramic briquettes radiate heat from the rear burner for rotisserie cooking.

Precision brass valves. Controls are mounted on durable brass valves that resist rust and corrosion, ensuring long life in an outdoor environment.

Dual-Burner Cooktops



ZX2NYSS (natural gas)
ZX2LYSS (liquid propane)
Dual-burner outdoor cooktop

General Features

Porcelain-coated cast-iron burners. The spark-ignition burners are 15,000-BTU-rated and come with a removable stainless steel cover that doubles as a work surface. Burners are baffled to reflect heat into the cooking area.

Precision brass valves. Controls are mounted on durable brass valves that resist rust and corrosion, ensuring long life in an outdoor environment.

Drip pan. The full-width stainless steel pan slides out easily for removal and cleaning.

Versatile installation. The dual-burner cooktops are designed to be built-in or added to the 27" cart.



Outdoor Cooking Accessories



ZX48CTACSS 48" cart



ZX36CTACSS 36" cart



ZX27CTACSS 27" cart



ZX24CTBSS 24" cart

Carts

Monogram® stainless steel carts offer the flexibility of a portable outdoor cooking center when a built-in installation is not desired. Carts come preassembled.

Accessible liquid propane tank. A smooth-sliding drawer allows full access to the liquid propane tank on 48" and 36" carts.

Fold-down shelf. Convenient fold-down side shelves on 48", 36" and 27" carts extend workspace and provide extra room for cooking utensils. (The 27" cart has one shelf.)

Inside storage. Ample storage is provided from two convenient condiment bins that hold grilling necessities. In addition, each cart has a large shelf for storing utensils, serving trays, or a bag of your favorite wood chips.

Mobility. Smooth-rolling, sleekly styled wheels make it easy to position the grill. Casters lock in place to ensure a stable cooking area.



Condiment bins and storage shelf.



Easy-access liquid propane tank drawer.



Storage area doors

ZXADYSS Double doors for built-in island or enclosure.

Stainless steel. The access doors are made of 304 stainless steel, to coordinate with any Monogram outdoor cooking center.

Secure closing. A positive latch ensures flush and secure closure.

Large opening. Doors in the open position provide a full view and easy access to the storage area.



Gourmet Radiant™ trays.

Beneath the grill racks, these uniquely designed trays sustain even heat distribution. They reduce grease flare-ups, eliminating the need for lava rocks or briquettes, and they remove easily for cleanup. (Available on 48", 36" and 27" models.)

Vinyl covers

Rugged and soft. The durable vinyl exterior withstands the elements, and the soft felt lining helps protect the surface of the outdoor cooking center.

Custom-tailored. Covers are customized to the design of each Monogram outdoor cooking center, specifically to a built-in or portable installation. Please review the specification charts for cover options.

Insulated jackets

ZX48JYSS Insulated jacket for 48" cooking center

ZX36JYSS Insulated jacket for 36" cooking center

ZX27JYSS Insulated jacket for 27" cooking center

ZX24JBSS Insulated jacket for 24" cooking center

ZX2JYSS Insulated jacket for dual-burner outdoor cooktop

Safety shield. The insulated jacket shields combustible cabinetry from the heat generated by the grill or dual-burner cooktop.

Stainless steel construction. 304 stainless steel provides strength, stability, and durability.

High-quality insulation. The protective jacket is filled with rigid insulation that serves as a safety shield for combustible cabinetry.

Trim kits

ZX27TKYSS 27" built-in grill installation

ZX24TKBSS 24" built-in grill installation

ZX2TKYSS Side burner built-in installation



48" and 36" outdoor cooking centers

	ZGG48N42CSS ZGG48L42CSS	ZGG48N31CSS ZGG48L31CSS	ZGG36N31CSS ZGG36L31CSS	ZGG36N21CSS ZGG36L21CSS
Description				
	48" outdoor cooking center with 4 grill burners, 2 rotisserie burners	48" outdoor cooking center with 3 grill burners, 2 cooktop burners, 1 rotisserie burner	36" outdoor cooking center with 3 grill burners, 1 rotisserie burner	36" outdoor cooking center with 2 grill burners, 2 cooktop burners, 1 rotisserie burner
Performance				
20,000-BTU cast-iron gas grill burners	4	3	3	2
14,000-BTU infrared gas rotisserie burner(s)	2	1	1	1
5,000-BTU stainless steel gas smoker burner	1	1	•	•
15,000-BTU cast-iron gas cooktop burners		2		2
Gourmet Radiant trays	•	•	•	•
Brass control valves	•	•	•	•
Rotary multi-spark Piezo ignition	•	•	•	•
Convenience				
Steel, porcelain-enameled grill grates	•	•	•	•
Cast-iron, porcelain-enameled cooktop burner grates		•		•
Warming rack	•	•	•	•
Stainless steel slide-out drip tray	•	•	•	•
Appearance				
Color appearance	Stainless steel	Stainless steel	Stainless steel	Stainless steel
Stainless steel cooktop burner cover		•		•
Accessories				
Double stainless steel doors for built-in installation	ZXADYSS	ZXADYSS	ZXADYSS	ZXADYSS
Insulated jacket	ZX48JYSS	ZX48JYSS	ZX36JYSS	ZX36JYSS
Stainless steel cart	ZX48CTACSS	ZX48CTACSS	ZX36CTACSS	ZX36CTACSS
LP gas tank	•	•	•	•
Felt-lined vinyl cover for built-in installations	ZX48CV4Y	ZX48CV3Y	ZX36CV3Y	ZX36CV2Y
Felt-lined vinyl cover for portable installations	ZX48CVCC	ZX48CVCC	ZX36CVCC	ZX36CVCC
General features				
Fuel configuration	Natural gas Liquid propane gas	Natural gas Liquid propane gas	Natural gas Liquid propane gas	Natural gas Liquid propane gas
Overall dimensions (WxHxD in inches)	47-7/8 x 22 x 25-3/8	47-7/8 x 22 x 25-3/8	35-7/8 x 22 x 25-3/8	35-7/8 x 22 x 25-3/8
Total grill area (sq. in.)	924	693	693	462
120VAC rotisserie motor	•	•	•	•
Approx. shipping weight (lbs.)	330	300	250	250
Full warranty*	1-year	1-year	1-year	1-year
Limited warranty*	5-year	5-year	5-year	5-year
Limited grill burner warranty*	Lifetime	Lifetime	Lifetime	Lifetime

*See written warranty for details.





27" and 24" outdoor cooking centers and dual-burner outdoor cooktop

	ZGG27N21CSS ZGG27L21CSS	ZGG27N20CSS ZGG27L20CSS	ZGG24L20BSS	ZX2NYSS ZX2LYSS
Description				
	27" outdoor cooking center with 2 grill burners, 1 rotisserie burner	27" outdoor cooking center with 2 grill burners	24" outdoor cooking center with 2 grill burners, rotisserie	Dual-burner outdoor cooktop
Performance				
20,000-BTU cast-iron gas grill burners	2	2		
15,000-BTU stainless steel gas grill burners			2	
14,000-BTU infrared gas rotisserie burner	1			
15,000-BTU cast-iron gas cooktop burners				2
Gourmet Radiant™ trays	•	•		
Brass control valves	•	•	•	•
Rotary multi-spark Piezo ignition	•	•	•	•
Convenience				
Steel, porcelain-enameled grill grates	•	•	•	
Cast-iron porcelainized cooktop burner grates				•
Stainless steel slide-out drip tray	•	•		•
Appearance				
Color appearance	Stainless steel	Stainless steel	Stainless steel	Stainless steel
Stainless steel cooktop burner cover				•
Accessories				
Trim kit for built-in installation	ZX27TKYSS	ZX27TKYSS	ZX24TKBSS	ZX2TKYSS
Double stainless steel doors for built-in installation	ZXADYSS	ZXADYSS	ZXADYSS	
Insulated jacket	ZX27JYSS	ZX27JYSS	ZX24JBSS	ZX2JYSS
Stainless steel cart	ZX27CTACSS	ZX27CTACSS	ZX24CTBSS	
LP gas tank	•	•		
Natural gas conversion kit	•	•	ZX24NGB	
Quick disconnect for side burner	ZX27QDC	ZX27QDC		
Felt-lined vinyl cover for built-in installations	ZX27CV2Y	ZX27CV2Y	ZX24CV2B	
Felt-lined vinyl cover for portable installations	ZX27CVCC	ZX27CVCC	ZX24CVCB	
Felt-lined vinyl cover for portable installations with side burners	ZX27CVDY	ZX27CVDY		
General features				
Fuel configuration	Natural gas Liquid propane gas	Natural gas Liquid propane gas	Liquid propane gas	Natural gas Liquid propane gas
Overall dimensions (WxHxD in inches)	27 x 24-3/8 x 24-3/4	27 x 24-3/8 x 24-3/4	24 x 18 x 23-3/4	13 x 10-1/2 x 25-3/4
Total grill area (sq. in.)	515	515	405	
120VAC rotisserie motor	•		•	
Approx. shipping weight (lbs.)	135	130	130	56
Full warranty*	1-year	1-year	1-year	1-year
Limited warranty*	5-year	5-year	5-year	5-year
Limited grill burner warranty*	Lifetime	Lifetime		

*See written warranty for details.



Outdoor/indoor refrigerator

ZDOD240PSS	
Description	24" undercounter outdoor/indoor refrigerator
Performance	
Total capacity	5.4 cu. ft.
Outdoor temperature performance	45°F (7.2°C) - 120°F (38°C)
Interior temperature range	34°F - 40°F
Defrost type	Auto cycle defrost
Convenience	
Digital temperature readout (°F)	•
Adjustable cold control	Upfront, recessed
Removable spillproof glass shelves	2 full-size, 1 QuickSpace™
Beverage shelves with full-extension slides	2 half-size
Interior light	•
Appearance	
Single door	Right-hinged only
Door and case color	Full stainless steel wrap
Toekick color	Stainless steel
Stainless steel professional-style handle	•
General features	
Installation options	Built-in or free-standing
Removable stainless steel top cap for built-in capability	•
Leveling legs	4, 2 fixed
Sealed system design	Condenser/evaporator
Lock and key	•
Vinyl cover, Stainless Steel Magic and polishing cloth	•
110° door stop	•
Cabinet/door insulation	Foam
Overall dimensions* (WxHxD in inches)	23-15/32 x 34-1/2 x 23-5/32
Outdoor UL qualified	•
Full warranty**	1- and 5-year full
	*Height includes fully-retracted support legs and door hinge.
	**See written warranty for details.



Acknowledgements

Special thanks to those who have helped make the Monogram® Home possible.



White Kitchen

- Cabinetry St. James® from Bentwood
972.227.6855 • impressionsfromstjames.com
Style: Vail
Finish: White / Stainless Steel
- Hardware Lewis Dolin, Inc.
914.232.7465 • lewisdolin.com
Style: Bar Series
Finish: Polished Chrome
- Flooring Mirage® Hardwood Floors, manufactured by Boa-Franc, Inc.
800.463.1303 • miragefloors.com
Style: Mirage® Engineered Hardwood Floors,
Finish/Size: Sambuca on Maple, 2-9/16" width
- Plumbing KOHLER Co.
800.4.KOHLER • kohler.com
Style: Poise™ Undercounter Entertainment Sink,
K-3161-NA
Finish: Stainless Steel
- Leather Furniture American Leather®
800.456.9599 • americanleather.com
Style: Sofa (GWA-SO2-LT); Chair (GWA-LCH-RA);
Table (GWA-BKC-MO)
Grade: Bison
Color: Stone BIS0028
- Lighting LBL Lighting
800.323.3226 • lblighting.com
Style: Silver Bullet pendant (LF900PC2D)
Finish: Polished Chrome w/chrome stem
- Resin Panels (Refrigerator & Cabinetry) 3form
800.726.0126 • 3-form.com
Product Line: Varia
Pattern: Vertu H Mini
Color: Clear
Back Finish: Sandstone



Metropolitan Kitchen

- Cabinetry Wood-Mode Fine Custom Cabinetry
800.635.7500 • wood-mode.com
Style: Vanguard Plus
Finish: Bistro on Cherry, Champagne on Maple
- Hardware Peter Meier, Inc.
800.222.6941 • petermeier.com
Style: No. 1559-SS Pull
Finish/Size: Stainless Steel, 224 mm c/c
- Flooring Ann Sacks Tile & Stone, Inc.
800.278.8453 • annsacks.com
Style: Natural Stone
Finish/Size: Israeli Blue Limestone, 16" x 16",
with Aluminum Grid
- Backsplash Ann Sacks Tile & Stone, Inc.
800.278.8453 • annsacks.com
Style: Loom by Bisazza Glass, AS7467-6
Finish/Size: Gravel, 1" x 1", on 12-3/8" x 12-3/8"
netted sheet
- Plumbing KOHLER Co.
800.4.KOHLER • kohler.com
Undertone Undercounter Kitchen Sink, K-3335
Finish: Stainless Steel, Avatar Single-Control
Faucet, K-6350
Finish: Polished Chrome, ProMaster Kitchen
Faucet (custom sink), K-6330
Finish: Polished Chrome
- Furniture Design Within Reach
800.944.2233 • dwr.com
Antica Leather Armchair, AR2105
Finish: Chestnut
- Stainless Steel Cookware All-Clad Metalcrafters LLC®
800.255.2523 • allclad.com
- Wine and Spirits Brown-Forman
502.585.1100 • brown-forman.com



Biedermeier Kitchen

- Cabinetry Wood-Mode Fine Custom Cabinetry
800.635.7500 • wood-mode.com
Style: Vanguard Plus
Finish: Nectar on Cherry with Custom Accents
- Hardware Prestige A92
- Flooring Ann Sacks Tile & Stone, Inc.
800.278.8453 • annsacks.com
Style: Natural Stone
Finish/Size: Giallo Marble, 16" x 16"
with Aluminum Grid
- Backsplash Ann Sacks Tile & Stone, Inc.
800.278.8453 • annsacks.com
Style: Lake Garda Glass
Finish/Size: Graphite, 2" x 6", alternating
etched/gloss blend, stacked joint
- Plumbing KOHLER Co.
800.4.KOHLER • kohler.com
Poise Undercounter Kitchen Sink, K-3159
Finish: Stainless Steel
Clairette Kitchen Sink Faucet, K-692
Finish: Brushed Nickel
- Stainless Steel Cookware All-Clad Metalcrafters LLC®
800.255.2523 • allclad.com





Visit us at *monogram.com*.

With just a few quick clicks, you can find detailed product and installation information for the entire GE Monogram Collection™. You can also get a glimpse into the homes of people across the country who have made Monogram® appliances an integral part of their kitchens and lifestyles.

THE GE MONOGRAM COLLECTION™

Search:

[Home](#) [Products](#) [What's New](#) [Where to Buy](#) [Monogram Living](#) [Literature](#)



Only Monogram offers the depth and breadth of design choices that allow you to customize your home and make it your own.

- [Products](#)
- [Custom Options & Accessories](#)
- [What's New](#)
- [Where to Buy](#)
- [Monogram Living](#)
Photo galleries, gourmet recipes, and more!
- [Literature](#)



GE Consumer & Industrial
 Appliances
 General Electric Company
 Louisville, KY 40225
 ge.com



2005 ENERGY STAR® Partner of the Year This prestigious honor, given by the US Department of Energy and the Environmental Protection Agency, reflects an ongoing commitment to developing energy-saving products for the home, including Monogram ENERGY STAR-qualified appliances. By choosing ENERGY STAR-qualified appliances, lighting and other products, the typical household can save up to 30% on their energy bills each year.

Product improvement is a continuing endeavor at GE. Therefore, materials, appearance and specifications are subject to change without notice.

© 2005 GE Company Publication Number 24-M415 PC39588